



Air Intake System for Low Mount CNH Combines CLM7010 & CLM7510 for Case IH 7010, 7120, 8010 & 8120 Combines Install Manual

WARNING

When the grain tank extensions and auger are folded down the Hillco Precleaner is the tallest point on the combine.

D-220525SJK01C

WARNING

Do not remove CNH precleaner or air filter. They must remain in place to work properly with the Hillco precleaner otherwise damage may occur to the engine.



Statement of Limited Warranty

Class III Warranty

Parts Only

Hillco warrants its Class III products to be free from defects in material and workmanship for a period of twelve (12) consecutive months following the warranty start date.

The warranty start date for Hillco Class III products is the date of the invoice, or the first date of use, whichever is earliest. Once the warranty period has begun, it cannot be stopped or interrupted.

Hillco warrants genuine Hillco replacement parts and components to be free from defects in material and workmanship for a period of ninety (90) consecutive days following the Hillco invoice date, or the remainder of the original equipment warranty period, whichever is longer.

Hillco's obligation under this parts warranty shall be limited to repairing or replacing, any part(s) that, in Hillco's judgment, shows evidence of such defect, to the original purchaser. This parts warranty does not cover any related labor associated with replacing parts deemed to be defective.

Limitations to Warranty

This warranty does not cover:

- 1) Any product damaged by accident, abuse, misuse, negligence, or improper maintenance.
- 2) Any unauthorized product alteration or modification.
- 3) Any unauthorized repairs made with parts other than genuine Hillco parts unless specifically authorized by Hillco.
- 4) Any repairs performed by anyone other than Hillco or an authorized Hillco dealer unless specifically authorized by Hillco.
- 5) Any claims directly resulting from improper installation, except those installations performed by Hillco.
- 6) Any labor costs associated with the defective part(s).

Warranty Procedure

Hillco Class III Warranty Registration Card must be completed and submitted by retail customer within thirty (30) days of purchase.

All warranty work must be performed, and claims submitted, within thirty (30) days of the occurrence of the claim and within the warranty period.

All parts removed during warranty repair should be held for a period of sixty (60) days after the warranty claim has been submitted to Hillco.

Hillco reserves the right to either inspect the product at the original retail purchaser's location, or the authorized Hillco's dealer's location; or require it to be returned to Hillco, transportation charges prepaid, for inspection.

To file a warranty claim, email support@hillcotechtechnologies.com with the following information:

- Your full name and phone number
- Proof of purchase
- Description of issue
- Serial number and/or part number(s) of items needing replaced, and
- If available, include any photos that can assist to describe the issue.

Limitation of Liability

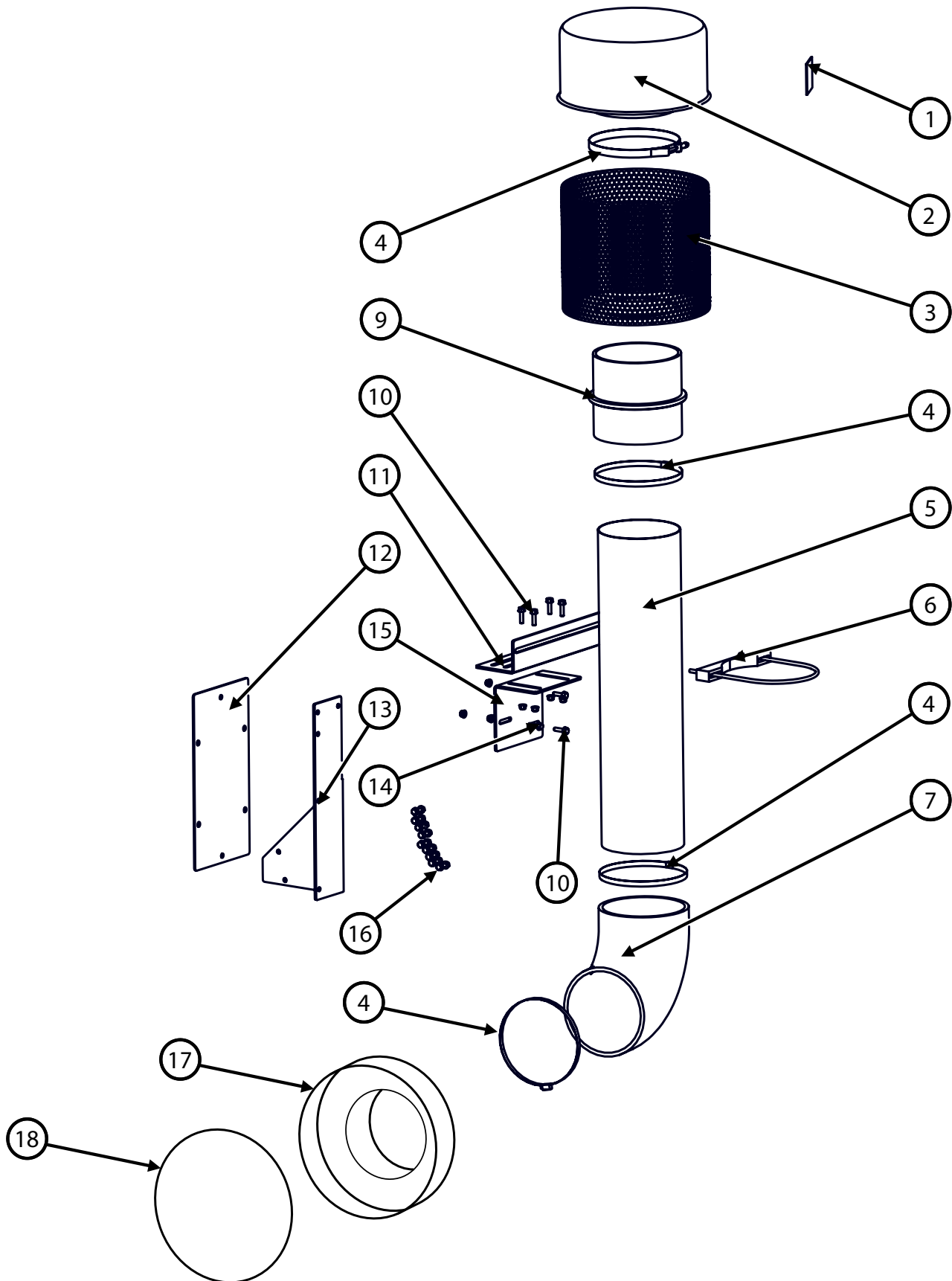
Hillco makes no express warranties other than those, which are specifically described herein. Any description of the goods sold hereunder, including any reference to buyer's specifications and any descriptions in circulars and other media published by Hillco is for the sole purpose of identifying such goods and shall not create an express warranty that the goods shall conform to such description.

THIS WARRANTY IS EXPRESSLY IN LIEU OF ALL OTHER WARRANTIES EXPRESSED OR IMPLIED. There are no implied warranties of merchantability or fitness for a particular purpose. This warranty states Hillco's entire and exclusive liability and buyer's exclusive remedy for any claim for damages in connection with the sale or furnishing of Hillco products, their design, suitability for use, installation, operation, or for any claimed defects herein. **HILLCO WILL IN NO EVENT BE LIABLE FOR ANY INCIDENTAL OR CONSEQUENTIAL DAMAGES WHATSOEVER, NOR FOR ANY SUM IN EXCESS OF THE PRICE RECEIVED FOR THE GOODS FOR WHICH LIABILITY IS CLAIMED.**

Neither representative of Hillco nor any dealer associated with Hillco has the authority to change the items of this warranty in any manner whatsoever, and no assistance to purchaser by Hillco in the repair or operation of any Hillco product shall constitute a waiver of the conditions of this warranty, nor shall such assistance extend or revive it.

Hillco reserves the right to make improvements in design or changes in specifications at any time, without incurring any obligation to owners of units previously sold.

Parts Breakdown



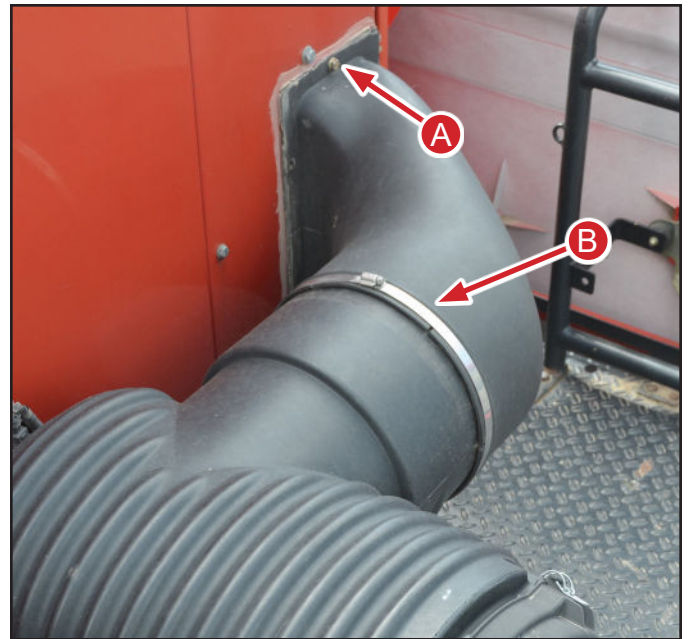
BOM ID	Hillco Part No.	Qty	Description
1	156137	1	DECAL, AIR FLOW, COMBINE
2	155683	1	EX-80 PRECLEANER
3	156233	1	CK-CORN SCREEN 8"
4	156105	4	8-1/2" HOSE CLAMP
5	156102	1	31X8X14GAUGE TUBE, BLACK
6	156104	1	8" U-BOLT CLAMP
7	155490	1	8" 90° ELBOW, RUBBER, W/ CLAMPS
9	156100	1	8" RUBBER HUMP HOSE
10	122.008	7	BOLT, M8X30
11	1376273	1	MOUNT, LOWER, OUTER
12	1333072	1	FLANGE, BASE
13	1372302	1	COVER, RADIATOR, LOWER, BENT
14	128.008	16	NUT, M8x1.5
15	1379361	1	MOUNT, BRACKET, DIRECT
16	1379361	9	BOLT, M8X20
17	156101	1	11-3/8 TO 8 AIR FILTER COUPLER
18	156106	1	TILE TAPE

Step 1 – Remove bolts holding factory intake to Radiator cover. (A). Bolts will be reused.

Step 2 – Loosen hose clamp (B) and remove filter housing to radiator coupler. Discard coupler.

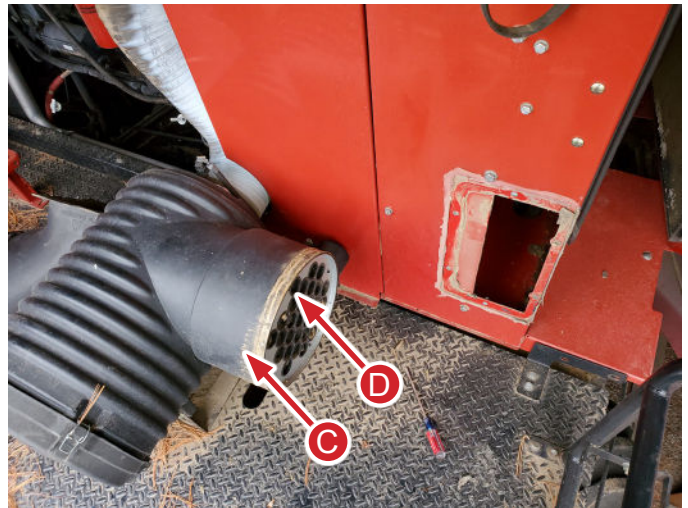
Step 3 - Clean filter housing surface (C). Verify all tubes in the factory housing are clear of debris and clean. (D)

Step 4 - Secure the radiator housing cover (part #2 or #3) using the stock Case fasteners. 2 radiator housing covers have been provided for both intake styles.



Factory intake hoses removed.

Note: On the exit side of the factory Filter Box there is a small hose that runs to the exhaust. Disconnect both ends of the hose and verify the hose is clear of any obstruction. If plugged, unplug with an air compressor. This hose is necessary for the system to function properly. Your new Hillco Air Flow System should keep this hose from ever plugging.

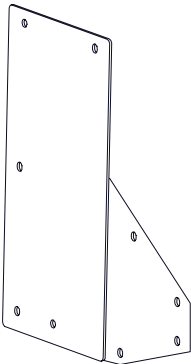


Hillco Cover plate installed.

Notice Do not use the Hillco Air Flow System as a replacement for your air filter. Running the machine without a filter will cause severe engine damage.



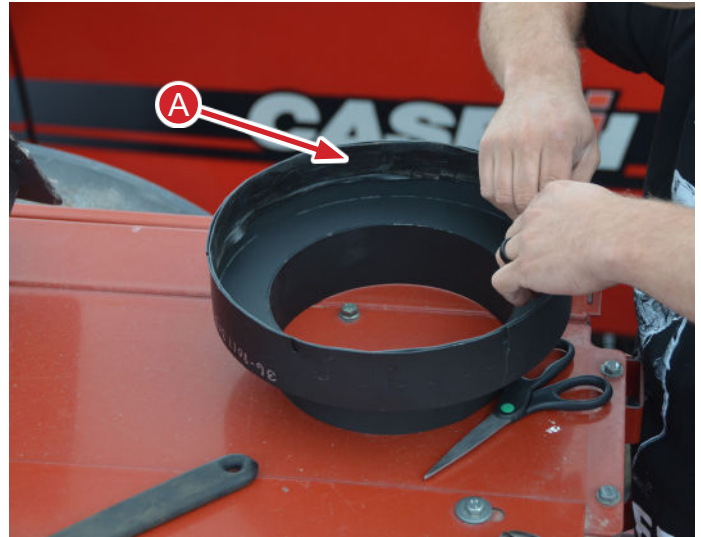
If your 7120 or 8120 is equipped with a wrap around intake, please use the wrap around cover provided.



Wrap around plate installed.



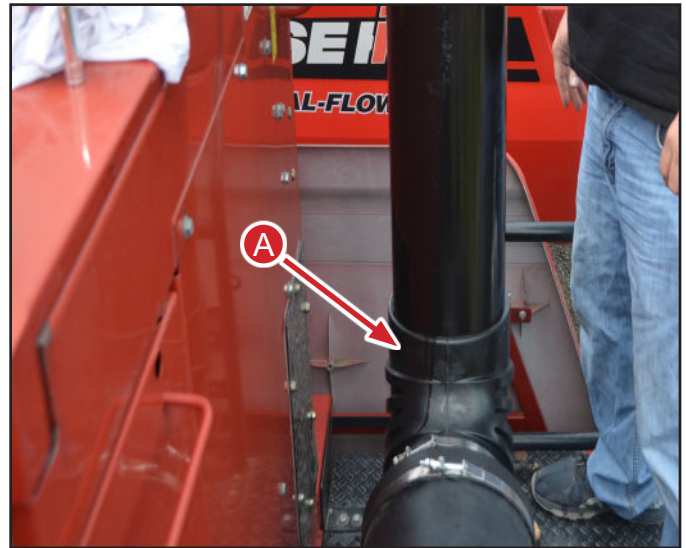
Step 5 - Apply the supplied tile tape to the inside of the coupler (A). This will create a seal between the adapter and the original Case precleaner.



Step 6 - This part of the install can be particularly difficult. Bending the adapter opening slightly to create a bell shape will help. Take care and time to slide the adapter onto the filter housing. This needs to be a tight fit to stop air leaks around the adapter. Once it is in place, use the supplied hose clamp to tighten and seal the adapter.



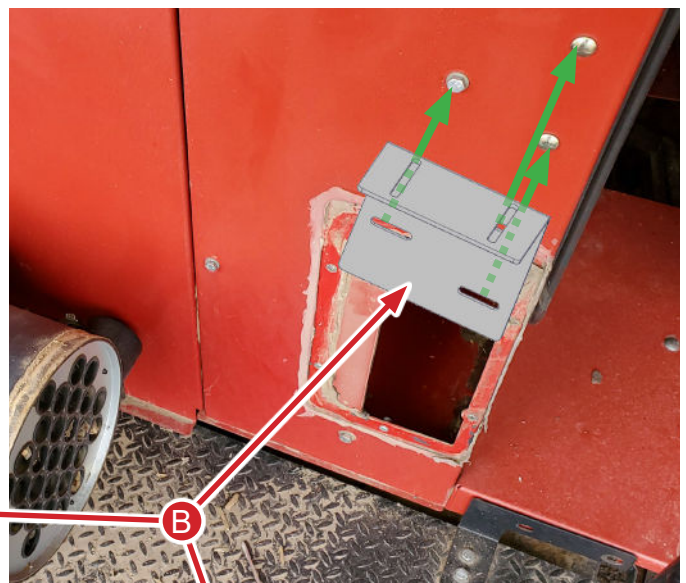
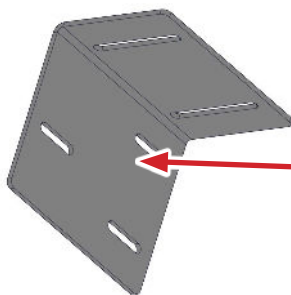
Step 7 - Slide the 8" rubber elbow (A) onto the coupler with the clamps. Insert the 8" tube into the rubber elbow. A spray lubricant may be needed.



Step 8 - Locate the bottom bracket (1379361) (B).

On some models the 3 hole pattern on the bracket will line up with existing bolts going into the radiator cover. Remove those bolts and secure the bracket.

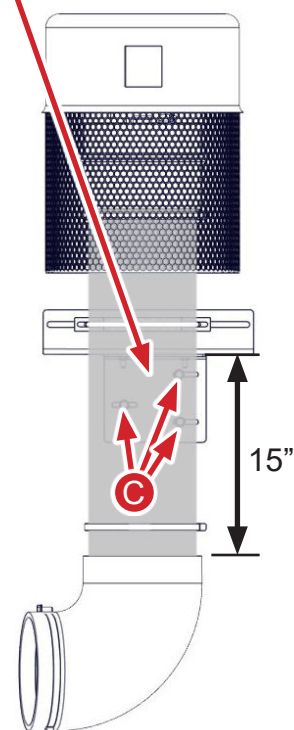
On older models holes must be drilled.



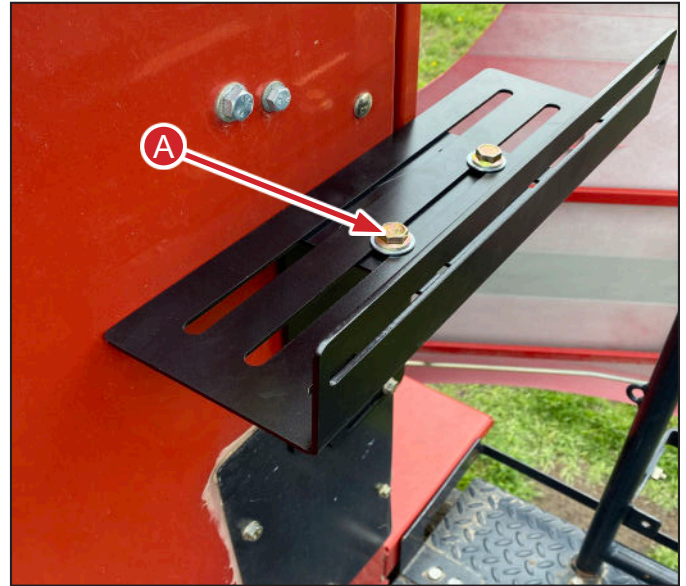
If your combine does not have existing holes for the mount to use then you will need to drill them. Locate the top of the mount roughly 15" above the ring of the 90° elbow. Mark the 3 holes (C) and drill. Verify first there is nothing behind that can be damaged.

The 15" is an approximate number due to combine variations but enough room as to be left between the top of the bracket and the corn screen for the screen to be moved down out of the way to access precleaner clamp.

NOTE: If your combine is not equipped with a corn screen this bracket can be moved higher on the radiator housing.



Step 8 – Secure the upper and lower adjustable mounts with the M8 x 30 bolts and nuts (A). Do not tighten at this time.



Step 9 – Use the 8” clamp (B) provided to secure the intake tube to the adjustable mount.

Align the precleaner with the combine so it stands straight. Tighten all clamping bolts.



Step 10 – For Kit #CLM7510 only, slide the corn screen support clamp (A) over the intake tube so that it rests on the tube support bracket (B). It will be located at the correct spot later in the installation.



Next, slide the corn screen (C) onto the intake tube so that it rests on top of the support clamp.



Step 11 – Install the 8” rubber hump hose on top of the intake tube (A). Slide Hump hose on far enough to achieve engagement with the supplied hose clamp. (2 in.) Finally, install the Pre-cleaner top into the hump hose. Verify the Precleaner slides into the hump hose far enough to achieve engagement with the provided hose clamp.

Spin precleaner so the discharge vent (B) is to the right side of the combine. If it is pointing a different direction it will blow dust particles towards the engine.



Step 12 – For Kit #CLM7510 only, slide the support clamp and corn screen up until a good seal is made around the base of the Pre-cleaner top. Fasten the support clamp tightly.

Make sure all clamps are tight and all rubber couplers are sealed.



This completes the installation.



This completes the installation.

Please call Hillco Technologies at (800)937-2461 with any questions you may have about this install.