



**Model 2975H**  
**Hillside Leveling System**  
**Parts Manual**

**SN 2975H-1501 thru 2975H-1599**

D-100725ADL01A





**2975 Hillside Leveling System**  
for 9870, 9770, and 9670 John Deere Combines

**TABLE OF CONTENTS**

<b>1 GENERAL INFORMATION</b> .....	<b>1-3</b>
Serial Number Location.....	1-3
Text Format and Illustrations.....	1-3
Abbreviations.....	1-3
Right and Left Identification.....	1-3
Parts Orders.....	1-3
<b>2 TRANSITION</b> .....	<b>2-1</b>
Radial Pin Slip Clutch.....	2-3
Transition Fasteners.....	2-5
<b>3 CARRIAGE</b> .....	<b>3-1</b>
Carriage Fasteners.....	3-3
<b>4 DROP AXLE</b> .....	<b>4-1</b>
<b>5 LADDER</b> .....	<b>5-1</b>
<b>6 ELECTRICAL COMPONENTS</b> .....	<b>6-1</b>
Electrical Connectors and Cables.....	6-3
<b>7 HYDRAULICS</b> .....	<b>7-1</b>
PFC Pump Assembly.....	7-103
PFC Pump.....	7-104
PFC Idler Assembly.....	7-106
Hydraulic Trim Manifold.....	7-7
Hydraulic Hoses.....	7-10
Hydraulic Hoses (Continued).....	7-11
Hydraulic Adapters.....	7-12
<b>8 MISCELLANEOUS</b> .....	<b>8-1</b>
<b>9 PART NUMBER INDEX</b> .....	<b>9-1</b>
Part Number Index (Continued).....	9-2

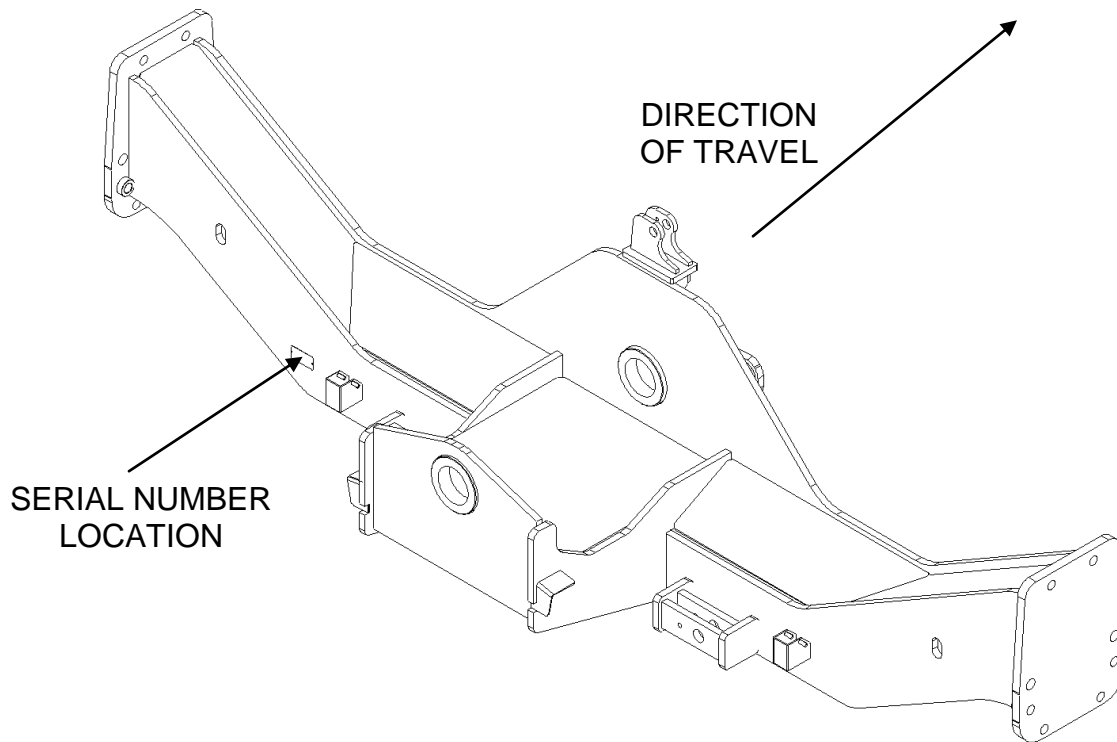
Model 2975H Hillco Leveling System  
For Serial Numbers 2975H-1501 thru 2975H-1599

Hillco Technologies, Inc.  
107 1<sup>st</sup> Avenue  
Nezperce Id. 83543

Fax	208.937.2280
Phone	208.937.2461
Toll Free	800.937.2461

## 1 **GENERAL INFORMATION**

### **SERIAL NUMBER LOCATION**



### **TEXT FORMAT AND ILLUSTRATIONS**

The arrangement of this parts catalog is for easy identification of parts. All parts are illustrated in exploded views in proper relation to each other. Some diagrams refer to other pages for further information. Reference numbers used in the illustrations refer to line numbers in the part lists. The part lists appear to the right of all diagrams and correspond with those diagrams. Included in the part lists, along with the reference numbers are part numbers, part descriptions and the quantity of the part required per leveling system.

### **ABBREVIATIONS**

**SN** "Serial Number" refers to the serial number given to each leveling system (by Hillco Technologies), as well as the serial number given to the combine (by the specific combine manufacturer) the leveling system is installed upon. This abbreviation is used interchangeably in both instances. Each model 2975 Leveling System uses the following serial number format: 2975H-XXXX (sequential numbers).

**ASM** "Assembly" refers to a whole grouping of parts (usually shown in the diagram corresponding with the page where "ASM" is shown unless otherwise noted). Some assemblies have parts that are sold separately, however some must be purchased as a single unit. Hillco Product Specialists will be able to assist you with any questions.

**NS** "Not Shown" refers to a part that is not depicted in the illustration.

### **RIGHT AND LEFT IDENTIFICATION**

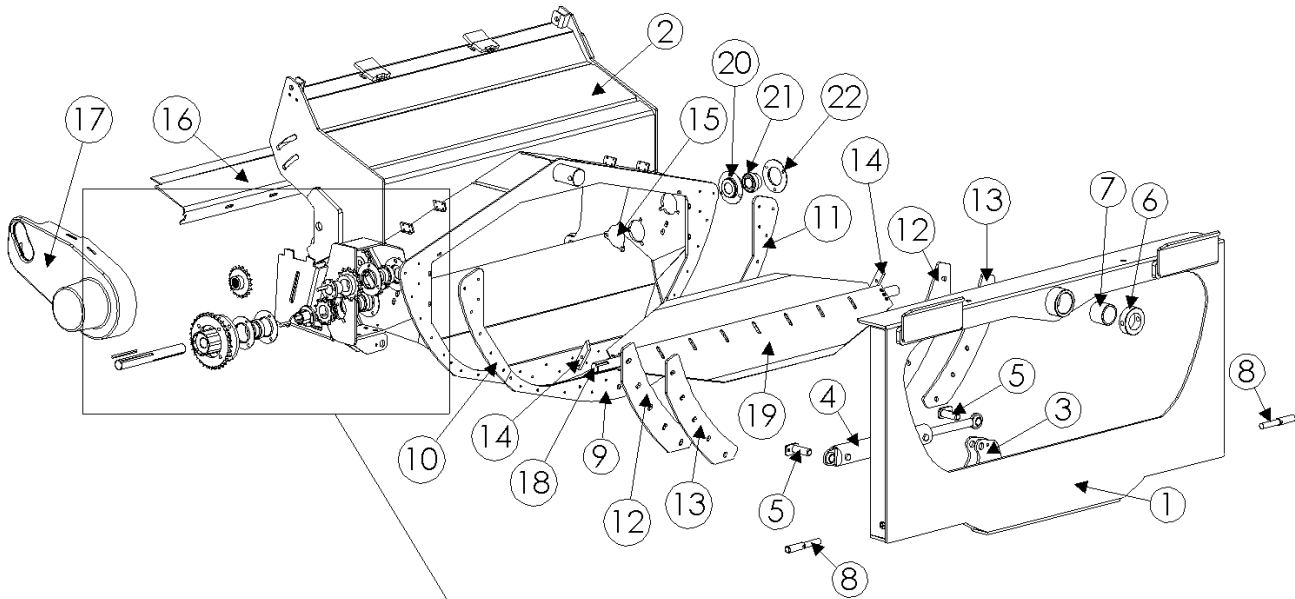
The reference to right-hand and left-hand in this catalog is identified by the operator sitting in the operator's seat, looking toward the front of the machine (in normal forward travel).

### **PARTS ORDERS**

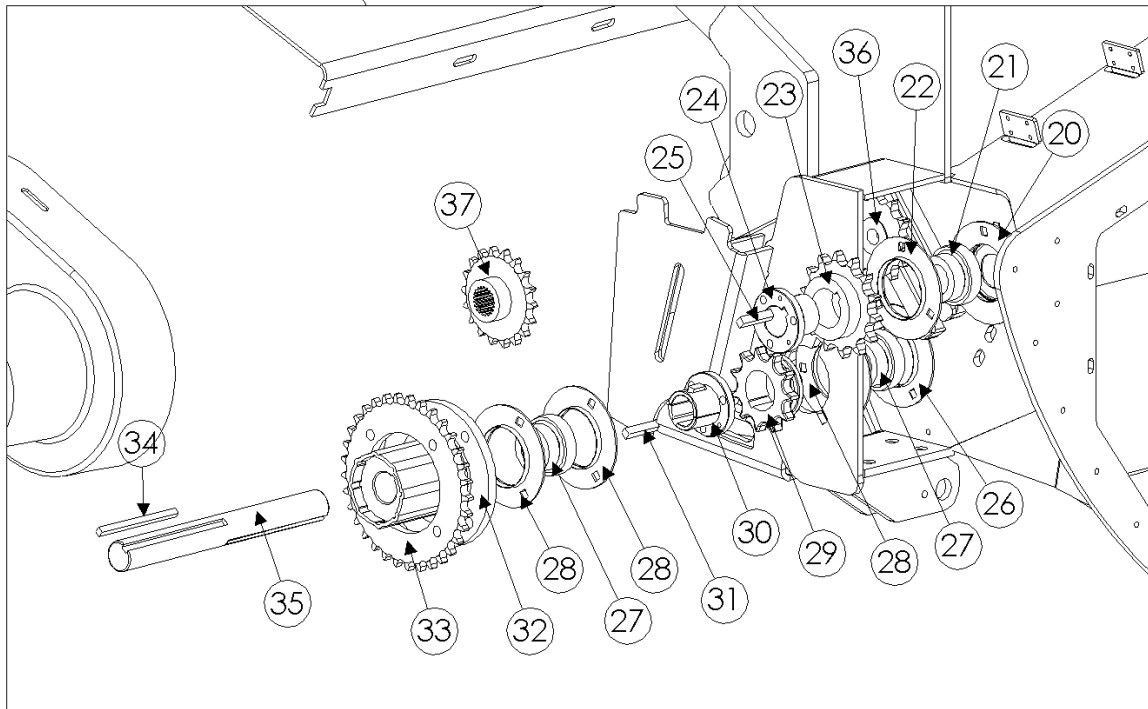
Orders must specify product model, serial number, correct part number, complete description, quantity required, method of shipment, shipping address, and billing address.

## 2 TRANSITION

SEE PAGE 2-5 FOR  
TRANSITION FASTENERS



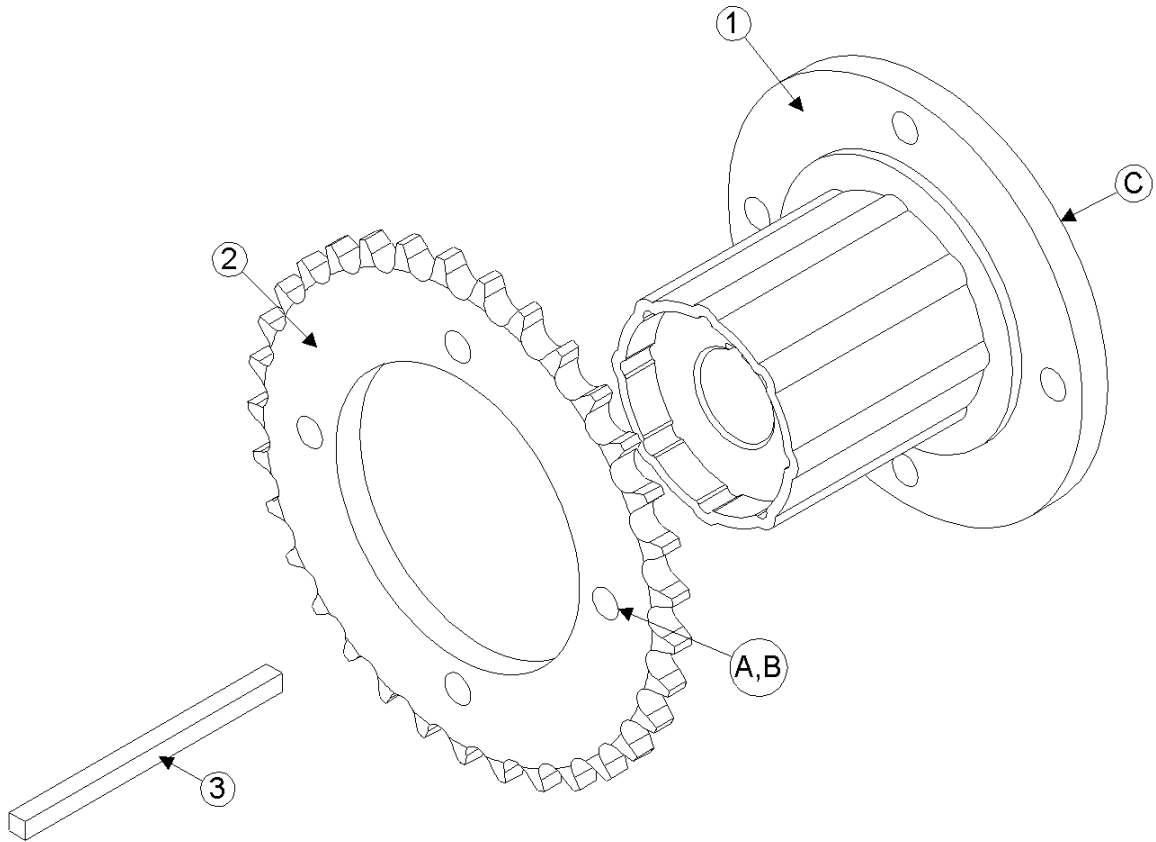
TRANSITION DRIVE COMPONENT DETAIL



Model 2975H Hillco Leveling System  
For Serial Numbers 2975H-1501 thru 2975H-1599

<b>TRANSITION COMPONENTS</b>				
<b>REF.</b>	<b>PART NO.</b>	<b>QTY.</b>	<b>DESCRIPTION</b>	<b>NOTES</b>
1	LA-228893	1	TA ASM	
2	LA-271732	1	TT ASM	
3	LA-229022	1	TM MOUNT ASM, ROD	
4	HC-147491	1	CYLINDER, SLAVE	SEE HYDRAULICS PAGE 7-1
5	LA-229071	2	TM PIN ASM, TRIM CYLINDER	
6	LM-226841	1	TM COLLAR, PIVOT	
7	LTP-241721	1	BUSHING, GRAPHITE	
8	LM-229192	2	TM ROD, LOCK	
NS	MC-135531	2	SPRING, COMPRESSION	
9	LM-229152	1	TM PLATE, WEAR BOTTOM	
10	LM-229161	1	TM PLATE, WEAR LH	
11	LM-229171	1	TM PLATE, WEAR RH	
12	LP-249861	2	TM PLT, BACKING	
13	LP-249871	2	TM UHMW, BACKING	
14	LM-262811X	2	TM STRIPPER, BEATER SHAFT	
15	LP-266271	1	TT PLT, CAP	
16	LP-271691	1	TT PLT, FLEX FLOOR REAR	
17	MC-147671	1	TM SHIELD, BEATER DRIVE	
<b>BEATER SHAFT</b>				
18	LA-251632	1	TB ASM, SHAFT	
19	LP-251002	2	TB PADDLE, METAL	
20	LA-243691	2	TM ASM, INNER FLANGETTE	
21	MC-100548	2	BEARING INSERT, 1-7/16, NON-RELUBE	
22	MC-101339	1	FLANGETTES, RND BEARING (PAIR)	
23	MC-136151	1	SPROCKET, 80P, 14T TAPER BORE	
24	MC-135511	1	HUB, SPLIT TAPER 1-7/16	
25	LS-212701	1	TM KEY, BEATER DRIVE, 3/8 X 2	
NS	LP-232162	1	TM ROLLER CHAIN, 28 PIN 80P	
NS	MC-139341	1	LINK, CONNECTING, 80P	
NS	MC-139351	1	LINK, OFFSET, 80P	
<b>TRANSITION THROAT JACK SHAFT</b>				
26	LA-243691	1	TM ASM, INNER FLANGETTE	
27	MC-100548	2	BEARING INSERT, 1-7/16, NON-RELUBE	
28	MC-101339	2	FLANGETTES, RND BEARING (PAIR)	
29	MC-135491	1	SPROCKET, 11T 80P TAPER BORE HRD	
30	MC-135511	1	HUB, SPLIT TAPER 1-7/16	
31	LS-212701	1	TM KEY, BEATER DRIVE, 3/8 X 2	
32	MC-136921	1	RADIAL PIN SLIP CLUTCH 1-7/16 BORE & 5/16 KEY	
33	LM-226532	1	TM SPROCKET, RADIAL SLIP CLUTCH	
34	LS-244471	1	TM KEY, RADIAL PIN SLIP CLUTCH	
35	LM-229142	1	TT SHAFT, JACK	
36	MC-137441	1	SPOCKET, IDLER 80P, 12T, 3/4	
37	LA-273851	1	TM ASM, DRIVE SPROCKET	
<b>OPTIONAL - PRO-DRIVE OPTION</b>				
NS	LP-274251	1	HM TABLE, HYDRO HOSE	
NS	LM-274241	1	LM PLT, SUPPORT, HYDRO HOSE	
NS	LA-274291	1	HM ASM, MNT PROPORTIONATOR	
NS	LA-274261	1	LM ASM, BULKHEAD MNT	
NS	LA-264171	1	LM, ASM, ROCK TRAP LINKAGE	

Model 2975H Hillco Leveling System  
For Serial Numbers 2975H-1501 thru 2975H-1599  
**RADIAL PIN SLIP CLUTCH**



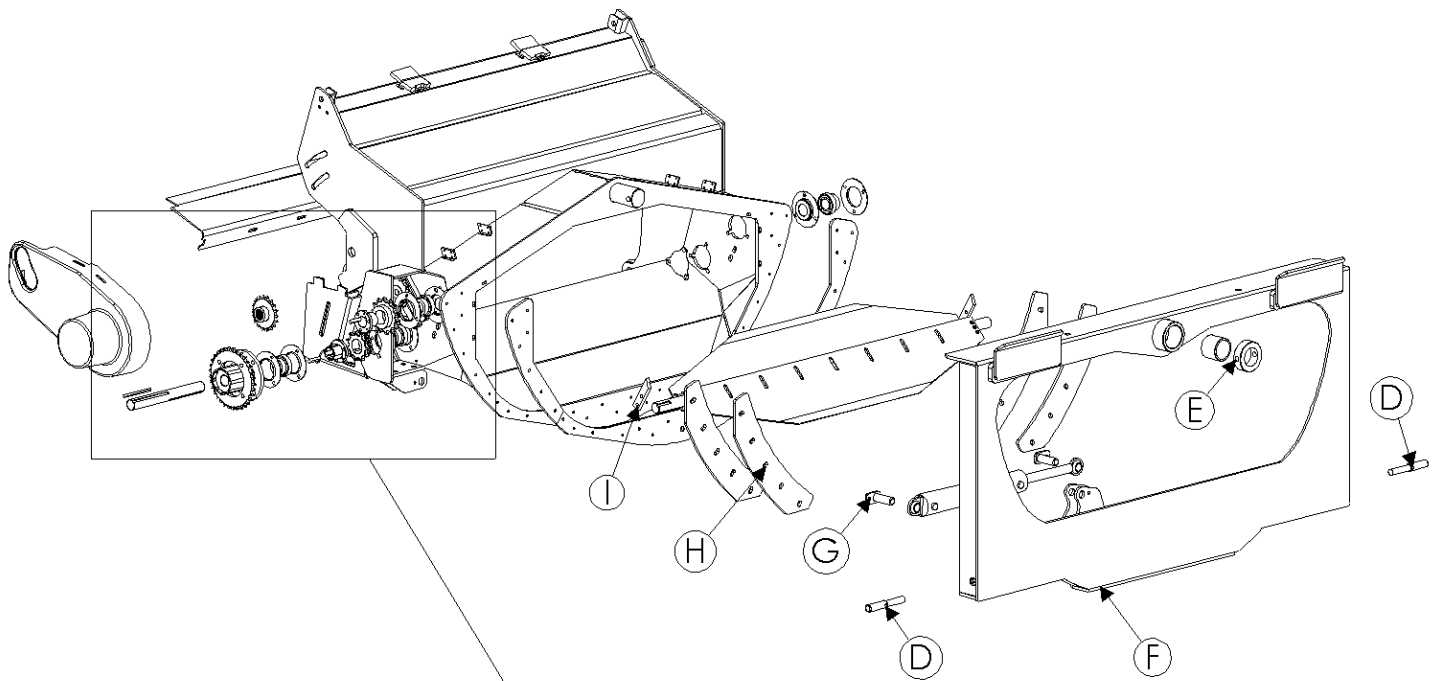


Model 2975H Hillco Leveling System  
For Serial Numbers 2975H-1501 thru 2975H-1599

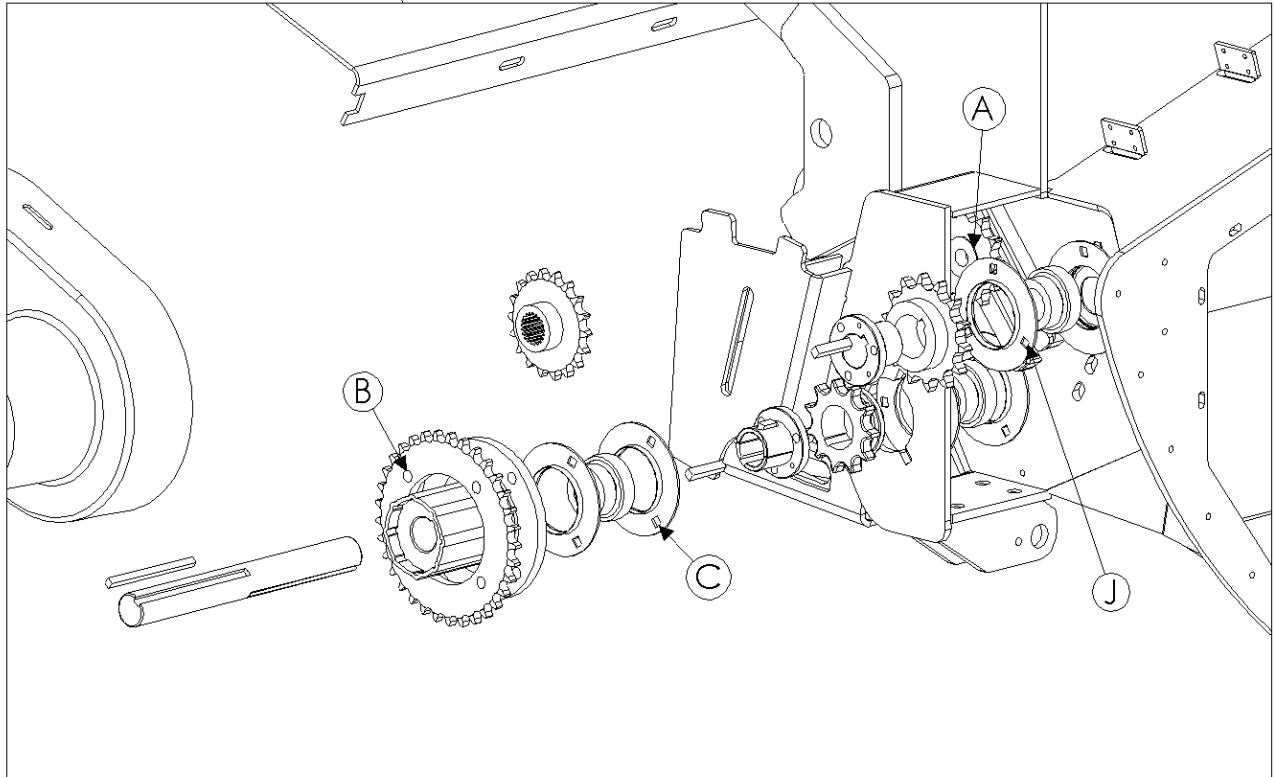
<b>RADIAL PIN SLIP CLUTCH COMPONENTS</b>				
<b>REF.</b>	<b>PART NO.</b>	<b>QTY.</b>	<b>PART NAME</b>	<b>NOTES</b>
1	MC-136921	1	RADIAL PIN SLIP CLUTCH	
2	LM-226532	1	TM SPROCKET, RADIAL SLIP CLUTCH	
3	LS-244471	2	TM KEY, RADIAL PIN SLIP CLUTCH	
<b>RADIAL PIN SLIP CLUTCH FASTENERS</b>				
A	F-HC8-08F20	4	HC8 1/2-20 X 1-1/4	
B	F-LW-08A	4	LW 1/2 HD	
C	F-SSS-06C08	2	SCREW, SOCKET SET 3/8-16 X 2	

Model 2975H Hillco Leveling System  
For Serial Numbers 2975H-1501 thru 2975H-1599

**TRANSITION FASTENERS**



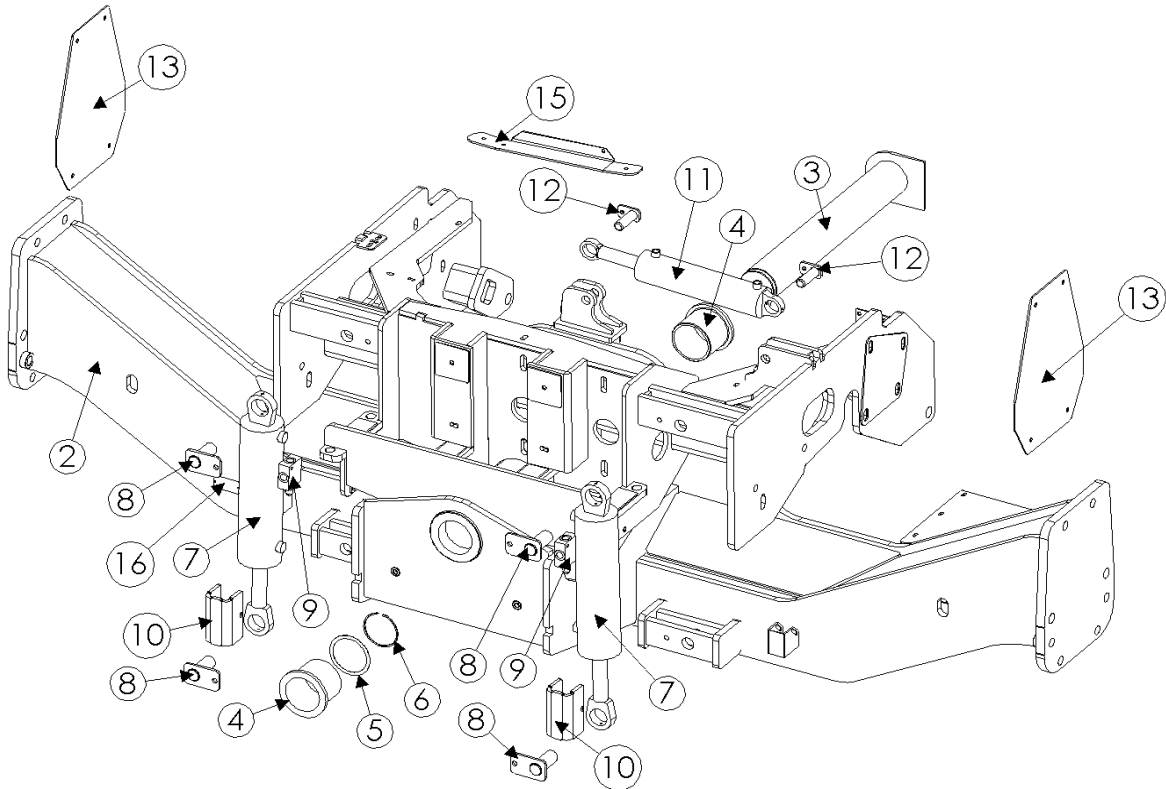
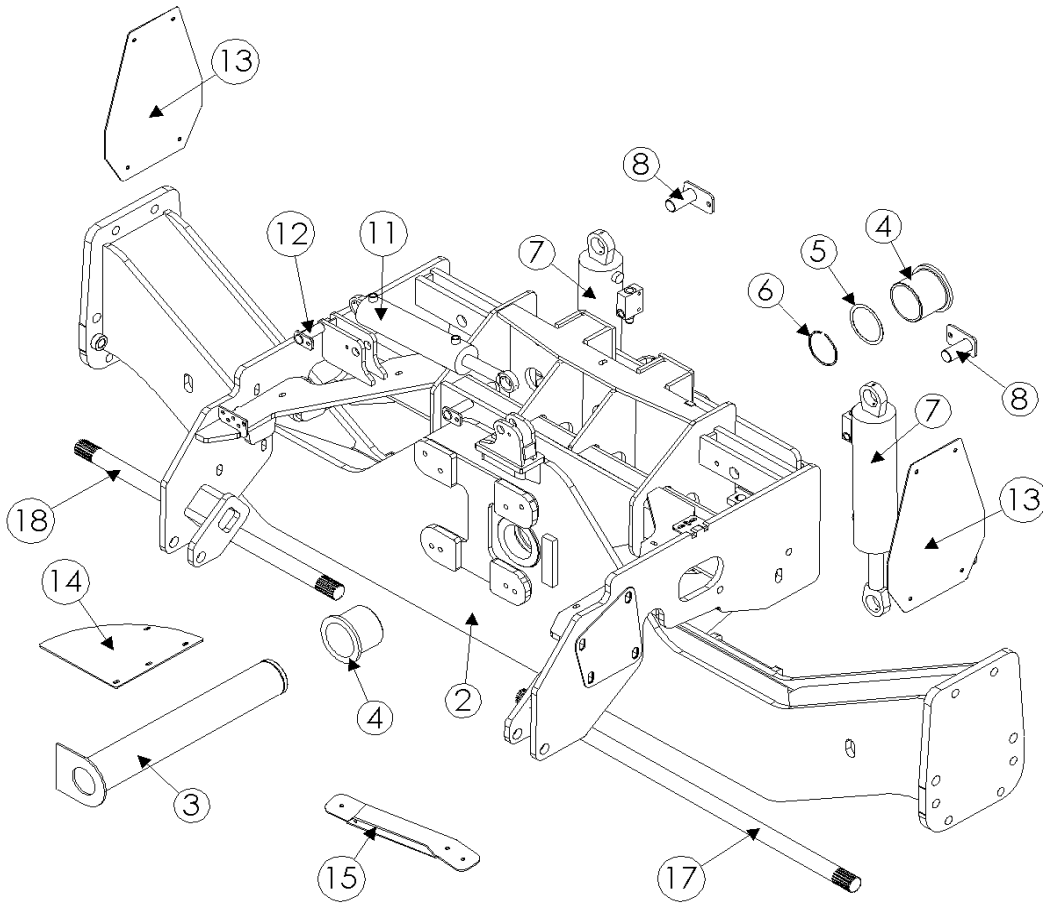
TRANSITION DRIVE COMPONENT FASTENERS DETAIL



Model 2975H Hillco Leveling System  
For Serial Numbers 2975H-1501 thru 2975H-1599

<b>TRANSITION FASTENERS</b>				
<b>REF.</b>	<b>PART NO.</b>	<b>QTY.</b>	<b>DESCRIPTION</b>	<b>NOTES</b>
A	F-FWH-12	10	FW, HD 3/4	80P IDLER SPROCKET AXLE
A	F-HC8-12C48	1	HC8 3/4-10 X 3" PLT	80P IDLER SPROCKET AXLE
A	F-HNS-12C	1	HN8 3/4-10 STV PLT	80P IDLER SPROCKET AXLE
B	F-HC8-08F20	4	HC8 1/2-20 X 1-1/4	RADIAL PIN SLIP CLUTCH
B	F-LW-08A	4	LW 1/2 HD	RADIAL PIN SLIP CLUTCH
C	F-CB-10M030F	12	CARR-8.8 M10 X 1.50 X 30 PLT	JACKSHAFT BEARINGS, OUTER
C	F-HNF-10MF	12	FLHN-8.8 M10 X 1.50 PLT	JACKSHAFT BEARING
D	F-SHC-10M070F	2	SHCS-8.8 M10 X 1.50 X 70 PLT	THA HEADER LOCK
E	F-HC-16M120E	1	HC-10.9 M16 X 2.00 X 120 PLT	TRANSITION MAIN PIVOT PIN COLLAR
E	F-HNS-16ME	1	HN-10.9 M16 X 2.00 STV PLT	TRANSITION MAIN PIVOT PIN COLLAR
E	F-MB-14NR40	3	MACH BUSH 14 GA NR 2-1/2"	TRANSITION MAIN PIVOT PIN
F	F-HC-16M050E	3	HC-10.9 M16 X 2.00 X 50 PLT	ROD MNT
F	F-HNS-16ME	3	HN-10.9 M16 X 2.00 STV PLT	ROD MNT
G	F-HCF-10M020F	2	FLHC-8.8 M10 X 1.50 X 20 PLT	SLAVE CYL MNT PIN
H	F-FHS-8M016E	29	FHSC-10.9 M8 X 1.25 X 15	TT FACE PLATE
I	F-HCF-12M020E	4	FLHC-10.0 M12 X 1.75 X 20	BEATER SHAFT STRIPPERS
J	F-MB-14NR14	2	MACH BUSH 14 GA NR 7/8"	BEATER DRIVE ASM

### 3 CARRIAGE

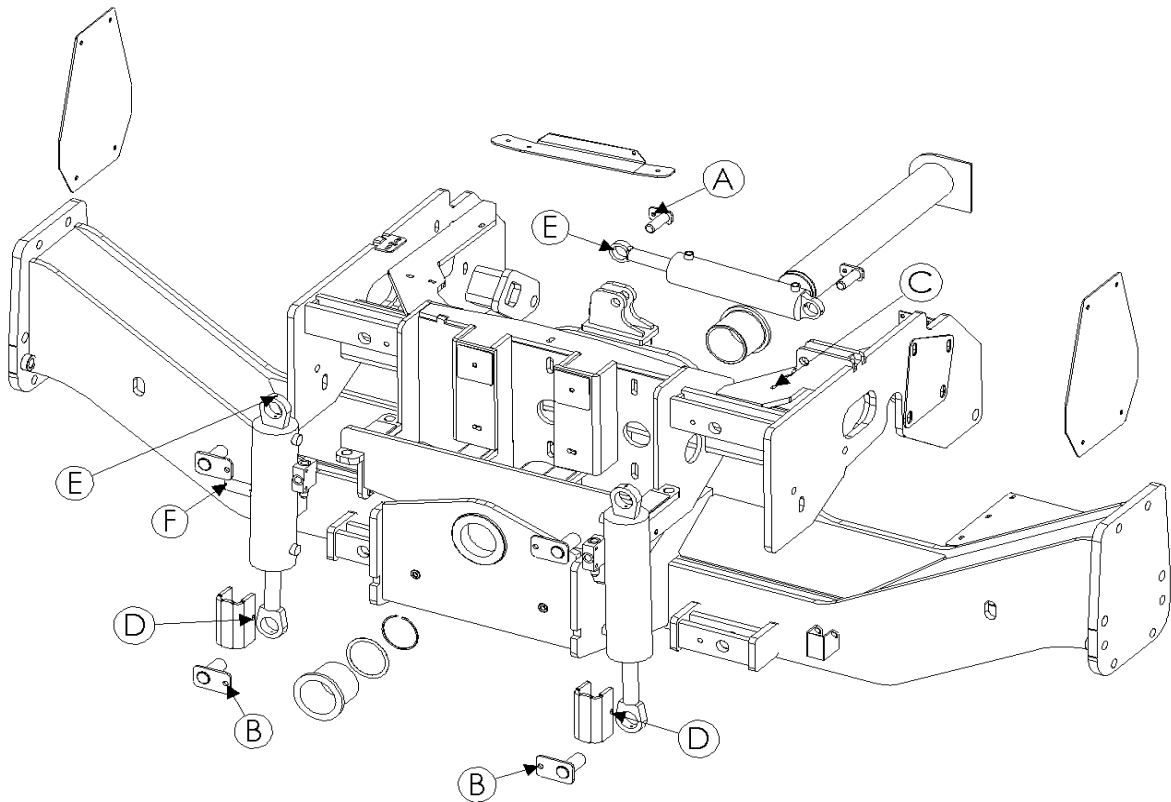
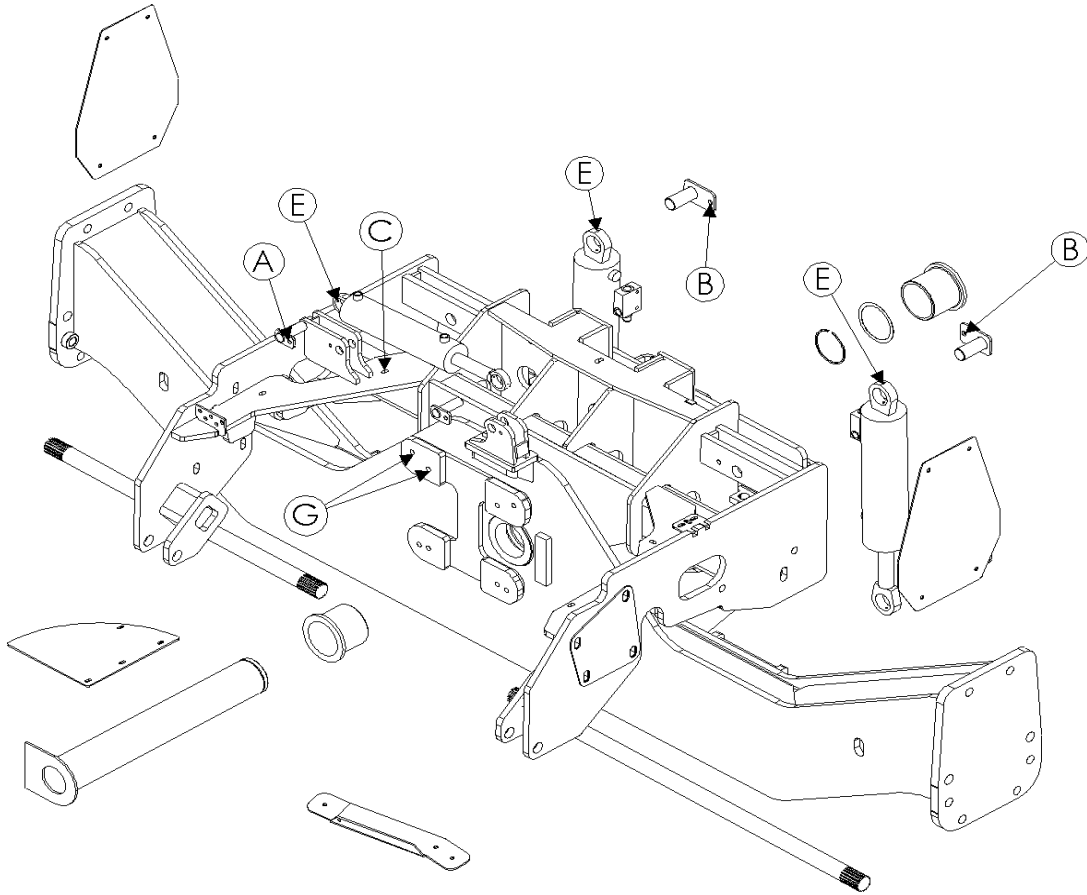


Model 2975H Hillco Leveling System  
For Serial Numbers 2975H-1501 thru 2975H-1599

<b>CARRIAGE COMPONENTS</b>				
<b>REF.</b>	<b>PART NO.</b>	<b>QTY.</b>	<b>DESCRIPTION</b>	<b>NOTES</b>
1	LA-271802	1	CO ASM	
2	LA-271791	1	CU ASM, 122.5	
3	LA-247482	1	CM PIN ASM, MAIN PIVOT	
4	LP-247961	2	CM BUSHING, PIVOT	
5	MC-138641	4	WASHER	
6	MC-138651	1	SNAP RING 4"	
7	HC-147511	2	CYLINDER, MAIN	SEE HYDRAULICS PAGE 7-1
8	LA-230552	4	CM PIN ASM, MAIN CYLINDER	
9	HC-139151	2	VALVE, 3-PORT COUNTERBALANCE	SEE HYDRAULICS PAGE 7-1
10	LP-249321	2	CM SPACER, SHIPPING	
11	HC-147501	1	CYLINDER, MASTER	SEE HYDRAULICS PAGE 7-1
12	LA-229071	2	TM PIN ASM, TRIM CLY	
13	LP-230241	2	CM CAP, AXLE	
14	LP-261121	1	HM TABLE, HYDRO HOSE	
15	LP-272101	1	HM MOUNT, HYDRO CLAMP	
16	LA-256001	1	TAG, SERIAL NUMBER	
ASM	LA-264171	1	LM, ASM, ROCK TRAP LINKAGE	
17	LA-264511	1	LM ASM, LINKAGE, ROCK TRAP	INCLUDED IN LA-264171
18	LA-264501	1	LM ASM, HANDLE, ROCK TRAP	INCLUDED IN LA-264171

Model 2975H Hillco Leveling System  
For Serial Numbers 2975H-1501 thru 2975H-1599

**CARRIAGE FASTENERS**

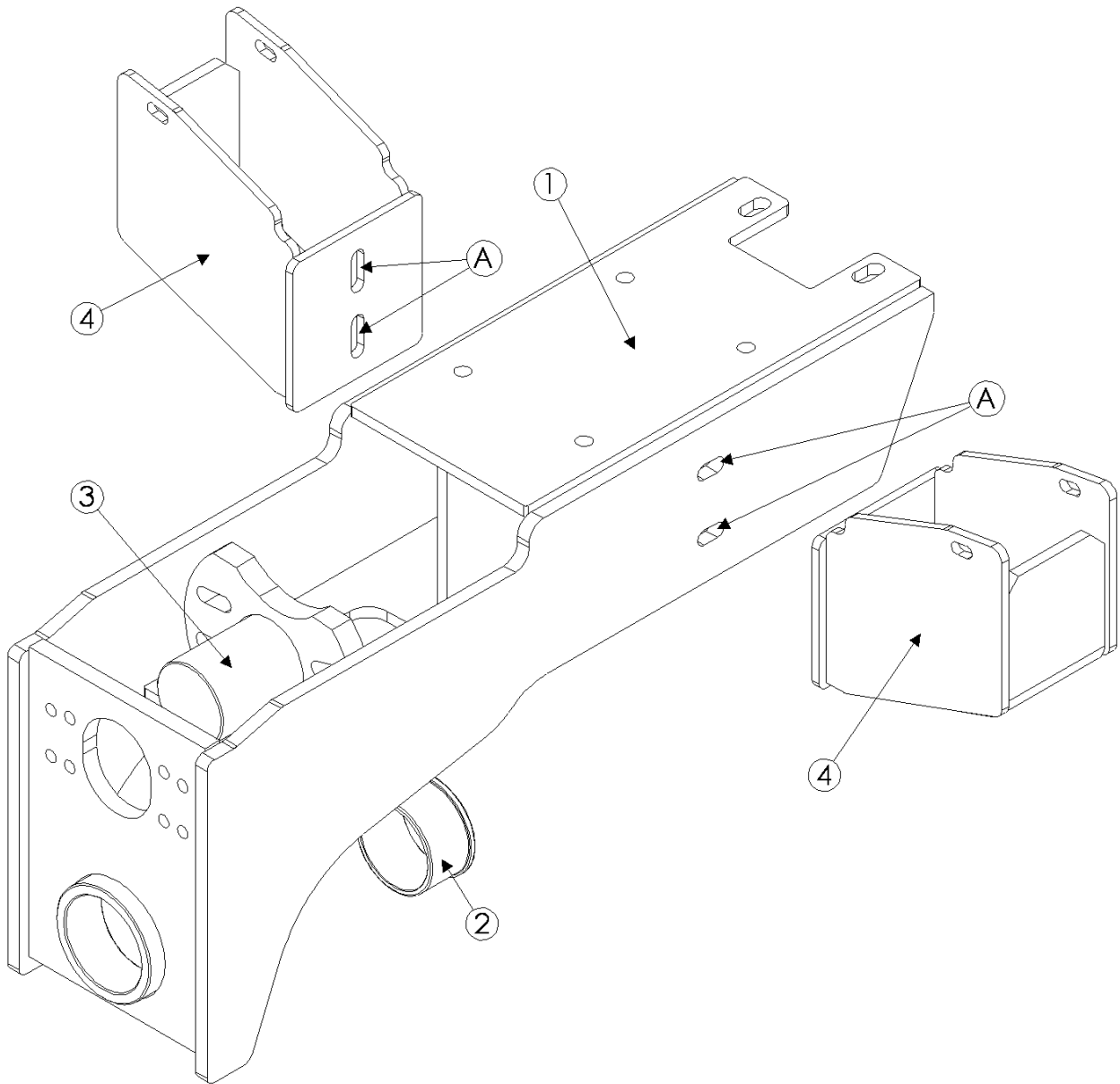


Model 2975H Hillco Leveling System  
For Serial Numbers 2975H-1501 thru 2975H-1599

<b>CARRIAGE FASTENERS</b>				
<b>REF.</b>	<b>PART NO.</b>	<b>QTY.</b>	<b>DESCRIPTION</b>	<b>NOTES</b>
A	F-HCF-10M020E	2	FLHC-10.9 M10 X 1.50 X 20 PLT	MASTER CYLINDER MOUNT PIN
B	F-HCF-12M040F	4	FLHC-8.8 M12 X 1.75 X 40 PLT	LEVELING CYLINDER MOUNT PIN
B	F-HNS-12ME	4	HN-10.9 M12 X 1.75 STV PLT	LEVELING CYLINDER MOUNT PIN
C	F-HCF-8M030F	2	FLHC-8.8 M8 X 1.25 X 30	HOSES CLAMPS FOR HEADER LIFT CYLINDER & GREASE HOSES
C	F-HNF-08MF	2	FLHN-8.8 M8 X 1.25 PLT	HOSES CLAMPS FOR HEADER LIFT CYLINDER & GREASE HOSES
D	F-PSL-04X48	2	SNAP LOCK PIN 1/4 X 3	SHIPPING SPACERS ON CYLINDERS
E	F-SSS-04F04	6	SET SCREW, SOCKET 1/4-28 X 1/4	MASTER & MAIN CYLINDERS
F	F-UDS-#7X06	2	#7 X 3/8 U-DRIVE SCREW	SERIAL NUMBER PLATE
G	MC-143711	4	STUD, DOUBLE-ENDED 10.9 M16 X 2.00 X 75 (20mm END - 41mm END)	UPPER TRANSMISSION MOUNTING HOLES ON UNDERCARRIAGE

Model 2975H Hillco Leveling System  
For Serial Numbers 2975H-1501 thru 2975H-1599

### 4 DROP AXLE





Model 2975H Hillco Leveling System  
For Serial Numbers 2975H-1501 thru 2975H-1599

<b>DROP AXLE COMPONENTS</b>				
<b>REF.</b>	<b>PART NO.</b>	<b>QTY.</b>	<b>DESCRIPTION</b>	<b>NOTES</b>
ASM	LA-271261	1	DA ASM, 2975	
1	LA-271271	1	DA ASM	
2	LA-265541	1	DA ASM, PIVOT	
3	LP-235092	1	LM BUSHING, DA PIVOT	
4	LA-271281	2	DA ASM, WING	
<b>DROP AXLE FASTENERS</b>				
A	F-HCF-16M050E	4	FLHC-10.9 M16 X 2.00 X 50 PLT	

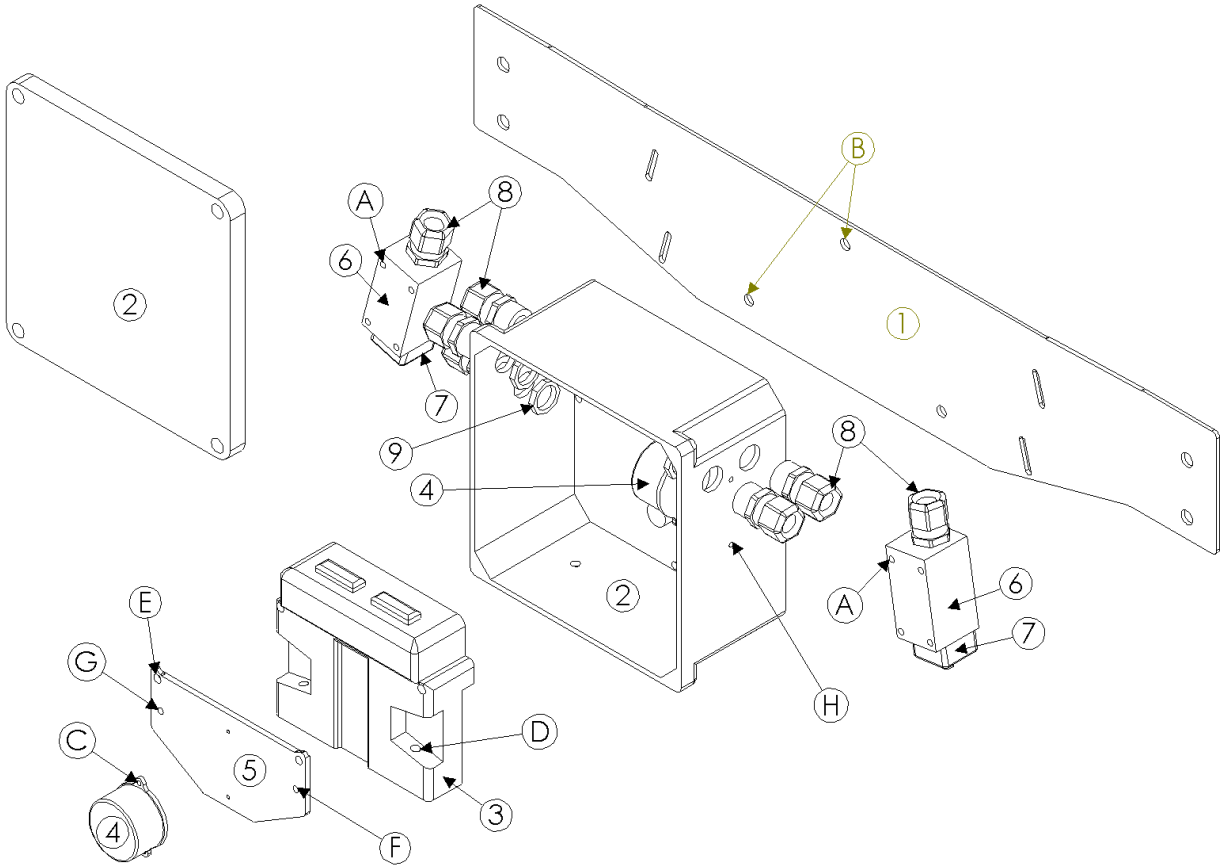


Model 2975H Hillco Leveling System  
For Serial Numbers 2975H-1501 thru 2975H-1599

<b>LADDER COMPONENTS</b>				
<b>REF.</b>	<b>PART NO.</b>	<b>QTY.</b>	<b>DESCRIPTION</b>	<b>NOTES</b>
1	LA-236563	1	LM STEP ASM, FOLDING LADDER LOWER	
2	LA-236542	1	LM PLT ASM, LFT SIDE FOLDING LADDER	
3	LA-236552	1	LM PLT ASM, RHT SIDE FOLDING LADDER	
4	LA-271911	1	LM ASM, UPPER ARM LEFT	
5	LA-271951	1	LM ASM, UPPER ARM RIGHT	
6	LA-271921	2	LM ASM, FOLDING LADDER LINK	
7	LA-238761	1	LM ASM, LADDER HANDLE	
8	MC-134921	2	GAS CHARGED LIFT SUPPORT	
9	LM-241271	4	LM FLT, LADDER SPACER	
10	LM-267981	8	LM BUSHING, LADDER PIVOT	
NS	MC-134931	2	LIFT SUPPORT BRACKETS (PAIR)	
<b>LADDER FASTENERS</b>				
<b>REF.</b>	<b>PART NO.</b>	<b>QTY.</b>	<b>DESCRIPTION</b>	<b>WHERE USED</b>
A	F-HC-12M050F	2	MM HC-8.8 M12 X 1.75 X 50 PLT	TOP SIDE PLATE PIVOT
A	F-HNS-12ME	2	MM HN-10.9 M12 X 1.75 STV PLT	PIVOTS
B	F-HC-12M030F	4	MM HC-8.8 M12 X 1.75 X 30 PLT	MIDDLE PIVOTS
B	F-HNS-12ME	4	MM HN-10.9 M12 X 1.75 STV PLT	PIVOTS
C	F-HC-12M065F	2	MM HC-8.8 M12 X 1.75 X 65 PLT	BOTTOM SIDE PLATE PIVOTS
C	F-HNS-12ME	2	MM HN-10.9 M12 X 1.75 STV PLT	PIVOTS
D	F-HCF-08M035F	8	MM HCF-8.8 M8 X 1.25 X 35 PLT	SIDE PLATE MOUNTS
D	F-HNF-08MF	8	MM FLHN 8.8 M8 X 1.25 PLT	SIDE PLATE MOUNTS
E	F-HNJ-05C	2	HN5 5/16-18 JAM NUT PLT	BALL STUD
E	F-LW-05	4	LW 5/16	BALL STUD
F	F-HC-08M025F	2	MM HC-8.8 M8 X 1.25 X 25 PLT	LADDER HANDLE
F	F-HNF-08MF	2	MM FLHN 8.8 M8 X 1.25 PLT	LADDER HANDLE

Model 2975H Hillco Leveling System  
For Serial Numbers 2975H-1501 thru 2975H-1599

## 6 ELECTRICAL COMPONENTS



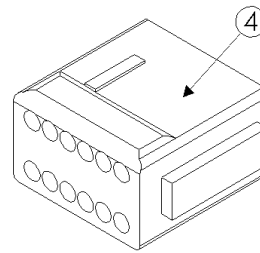
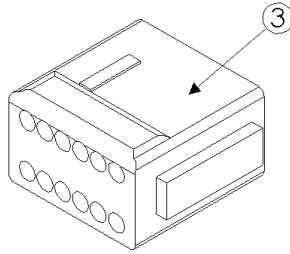
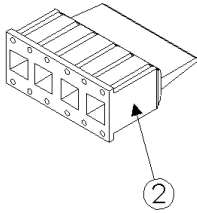
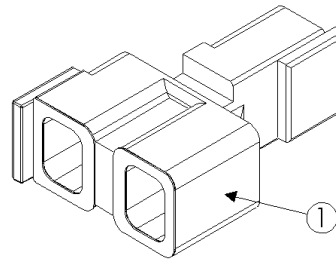
**CAB CONTROL MONITOR  
(REAR VIEW)**



Model 2975H Hillco Leveling System  
For Serial Numbers 2975H-1501 thru 2975H-1599

<b>ELECTRICAL COMPONENTS</b>				
REF.	PART NO.	QTY.	PART NAME	NOTES
ASM	LA-289301	1	EM ASM, CONTROLLER W/BOX MOUNT	
1	LP-276521	1	EM PLATE, ELECTRICAL MOUNT	
1	LM-260301	1	EM BOX, CONTROLLER MOUNT	
2	LP-234653	1	EM MOUNT, CONTROL BOX	
3	LA-260093	1	CONTROLLER	
4	LA-261191	1	EM ASM, CLINOMETER	**SEE NOTE BELOW DIAGRAM
..	EC-141841	2	EM CLINOMETER	
5	LM-255331	1	EM SHT, CLINOMETER MOUNT	
6	EC-100557	2	BODY, LIMIT SWITCH	
7	EC-100692	2	HEAD, LIMIT SWITCH STR PLUNGER	
8	EC-138781	7	STRAIN RELIEF, NYLON, BLK, 1/2 NPT	
9	EC-142121	5	STRAIN RELIEF NUT, 1/2" NYLON, BLK	
NS	LA-265831	1	EM WIRE ASM, Y-CONNECTOR	
..	EC-146481	1	BUZZER, PIEZO ELECTRIC	
<b>ELECTRICAL FASTENERS</b>				
A	F-PHM-#10C28	4	PHMS 10-24 X 1-3/4	LIMIT SWITCH MNT
A	F-HNF-#10C	4	HN 10-24, FLNG, SERR	LIMIT SWITCH MNT
B	F-HC5-04C12	3	HC5 1/4-20 X 3/4	PVC BOX TO BRACKET
B	F-LW-04	3	LW 1/4	PVC BOX TO BRACKET
C	F-PHM-#6C06	2	PHMS #6-32 X 3/8	CLINOMETER MNT TO PLATE
D	F-PHM-04C24	2	PHMS 1/4-20 X 1-1/2	CONTROLLER TO PVC BOX
D	F-HNF-04C	2	FLHN 1/4-20, SERR	CONTROLLER TO PVC BOX
E	F-PHM-04C36	2	PHMS 1/4-20 X 2-1/4	GROUNDING PLATE MOUNTING
E	F-HNF-04C	2	FLHN 1/4-20, SERR	GROUNDING PLATE MOUNTING
F	F-PHM-#10C16	1	PHMS 10-24 X 3/4	GROUNDING PLATE GROUND
F	F-HNF-#10C	1	HN5 10-24, FLNG, SERR	GROUNDING PLATE GROUND
F	F-HN-#10C	3	HN5 10-24	GROUNDING PLATE GROUND
G	F-PHM-#10C16	1	PHMS 10-24 X 1	Y-CONNECTOR TO GROUND
H	F-PHM-#6C08	2	PHMS #6-32 X 1/2	CLINOMETER MNT TO BOX
H	F-HNF-#6C	1	FLHN #6-32 SERR.	CLINOMETER MNT TO BOX
<b>CAB CONTROL MONITOR</b>				
REF.	PART NO.	QTY.	PART NAME	NOTES
ASM	LA-266031	1	EM ASM, CAB CONTROL MONITOR	
..	LM-265501X	1	EM MOUNT, DISPLAY	
..	LM-265511X	1	EM MOUNT, DISPLAY SPACER	
..	LA-265782	1	GRAPHICAL TERMINAL, S-D DP200	MOUNTING BRACKET, GASKET AND SCREWS, INCLUDED
..	LA-265581	1	EM CABLE ASM, CAB TO BOX	SEE PAGE 6-3
..	LA-265831	1	EM WIRE ASM, Y-CONNECTOR	SEE PAGE 6-3
..	EC-146481	1	BUZZER, PIEZO ELECTRIC	INCLUDED IN LA-265831
..	EC-146541	1	PLUG, GRAY, W/120 OHM RESISTOR	
<b>CAB CONTROL MONITOR FASTENERS</b>				
..	F-HCF-06M016E	2	FLHC-10.9 M6 X 1.0 X 16	GRAPHICAL TERMINAL MOUNTING
..	F-PHM-#10C08	1	PHMS 10-24 X 1/2	Y-CONNECTOR MOUNTING
..	F-HN-#10C	6-2	HN5 10-24	Y-CONNECTOR MOUNTING
..	EC-142101	1	CLAMP, HOSE 3/8" R/C W/ 3/8 HOLE	ELECTRICAL CABLE SUPPORT IN CAB

Model 2975H Hillco Leveling System  
 For Serial Numbers 2975H-1501 thru 2975H-1599  
**ELECTRICAL CONNECTORS AND CABLES**



**#5 LA-268261**  
EM CABLE ASM, LIMIT SWITCH



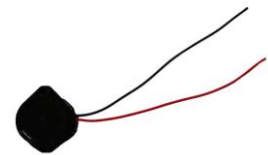
**#7 LA-255821**  
EM ASM, CLINOMETER



**#6 LA-255644**  
EM CABLE ASM,  
BOX TO VALVE



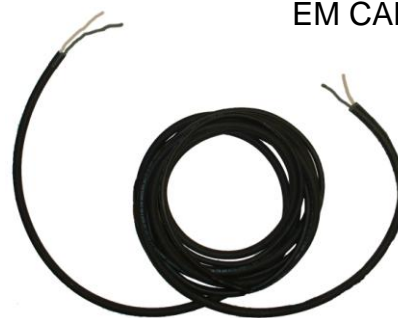
**#8 LA-268351**  
EM CABLE ASM, MANIFOLD



**#9 LA-265791**  
EM CABLE ASM, BUZZER



**#10 LA-265581**  
EM CABLE ASM, CAB TO BOX

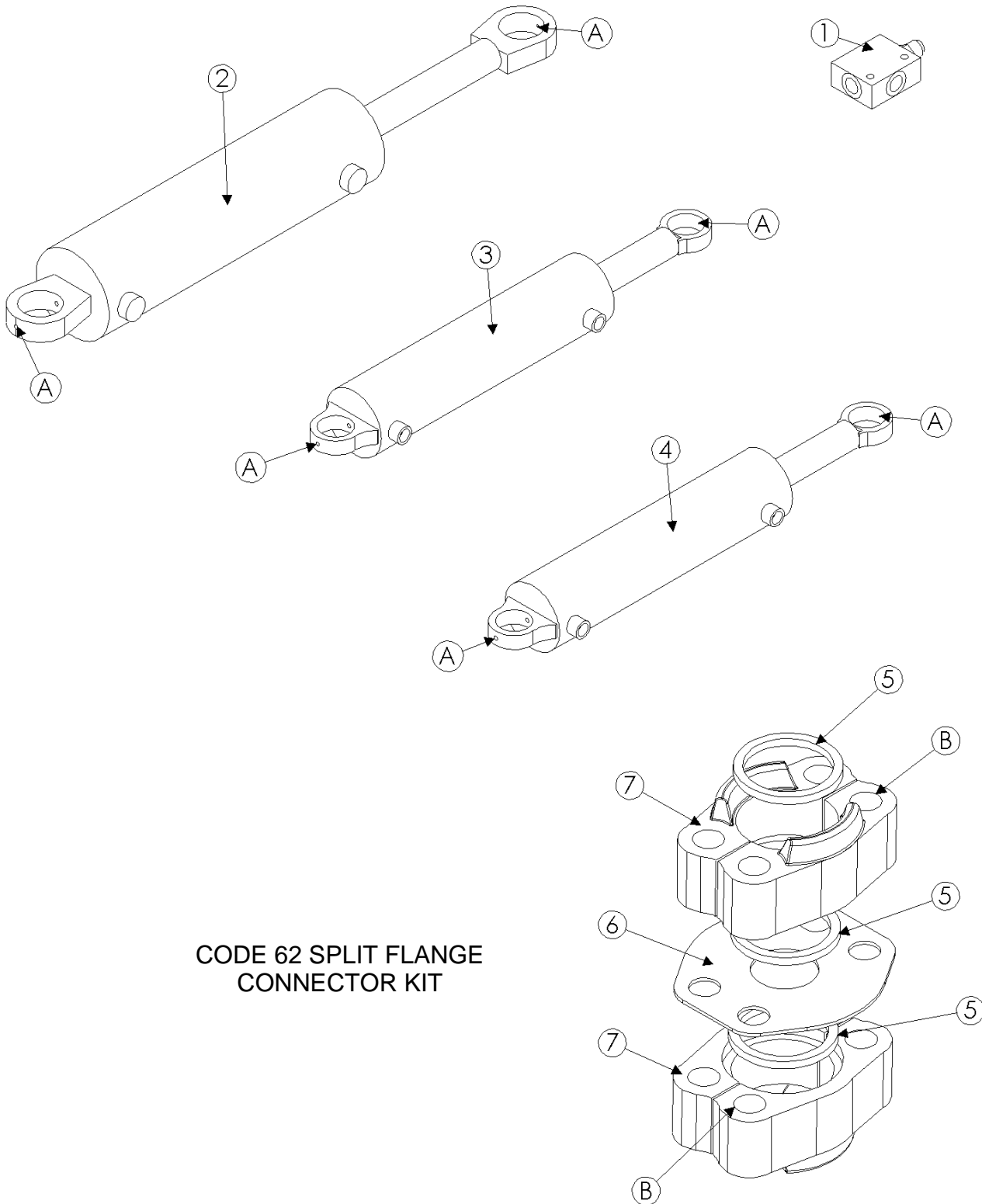


**#11 LA-265772**  
EM CABLE ASM, POWER & GROUND

Model 2975H Hillco Leveling System  
For Serial Numbers 2975H-1501 thru 2975H-1599

<b>ELECTRICAL CONNECTORS</b>				
<b>REF.</b>	<b>PART NO.</b>	<b>QTY.</b>	<b>DESCRIPTION</b>	<b>NOTES</b>
1	EC-146531	2	Y-CONNECTOR, BLACK	
2	EC-141741	4	DTM SERIES, 12-SOCKET WEDGE	
3	EC-141751	3	DTM SERIES, 12-SOCKET PLUG W/ A KEY	
4	EC-141761	1	DTM SERIES, 12-SOCKET PLUG W/ B KEY	
NS	EC-133281	2	DIODE, 6 AMP, 50 PIV, SILICON	
NS	EC-136941	5	CONNECTOR, PARALLEL, 16-14 GA.	
NS	EC-141771	23	DTM SERIES, SOCKET, CONTACT, STAMPED	
NS	EC-145671	10	DTM SERIES, PLUG, SEALING	
NS	EC-146501	1	CONNECTOR, STANDARD POWER STRIP	
NS	EC-146511	4	PLUG, GRAY, 2-SOCKET	
NS	EC-146521	4	WEDGE, BLACK, 2-SOCKET W/ B KEY	
NS	EC-146541	1	PLUG, GRAY, W/120 OHM RESISTOR	
NS	EC-146581	16	DTM SERIES, SOCKET CONTACT, SOLID	
NS	ET-ST-20#10	8	TERMINAL RING, #10, 20 GA., NON-INSULATED	
NS	ET-ST-2001	1	TERMINAL RING, 1/4, 20 GA., NON-INSULATED	
<b>ELECTRICAL CABLES</b>				
<b>REF.</b>	<b>PART NO.</b>	<b>QTY.</b>	<b>DESCRIPTION</b>	<b>WHERE USED</b>
5	LA-268261	2	EM CABLE ASM, LIMIT SWITCH	
6	LA-255644	1	EM CABLE ASM, BOX TO VALVE	
7	LA-255821	1	EM ASM, CLINOMETER	
8	LA-268351	1	EM ASM, MANIFOLD	
9	LA-265791	1	EM CABLE ASM, BUZZER	
10	LA-265581	1	EM CABLE ASM, CAB TO BOX	
11	LA-265772	1	EM CABLE ASM, POWER & GROUND	

### 7 HYDRAULICS



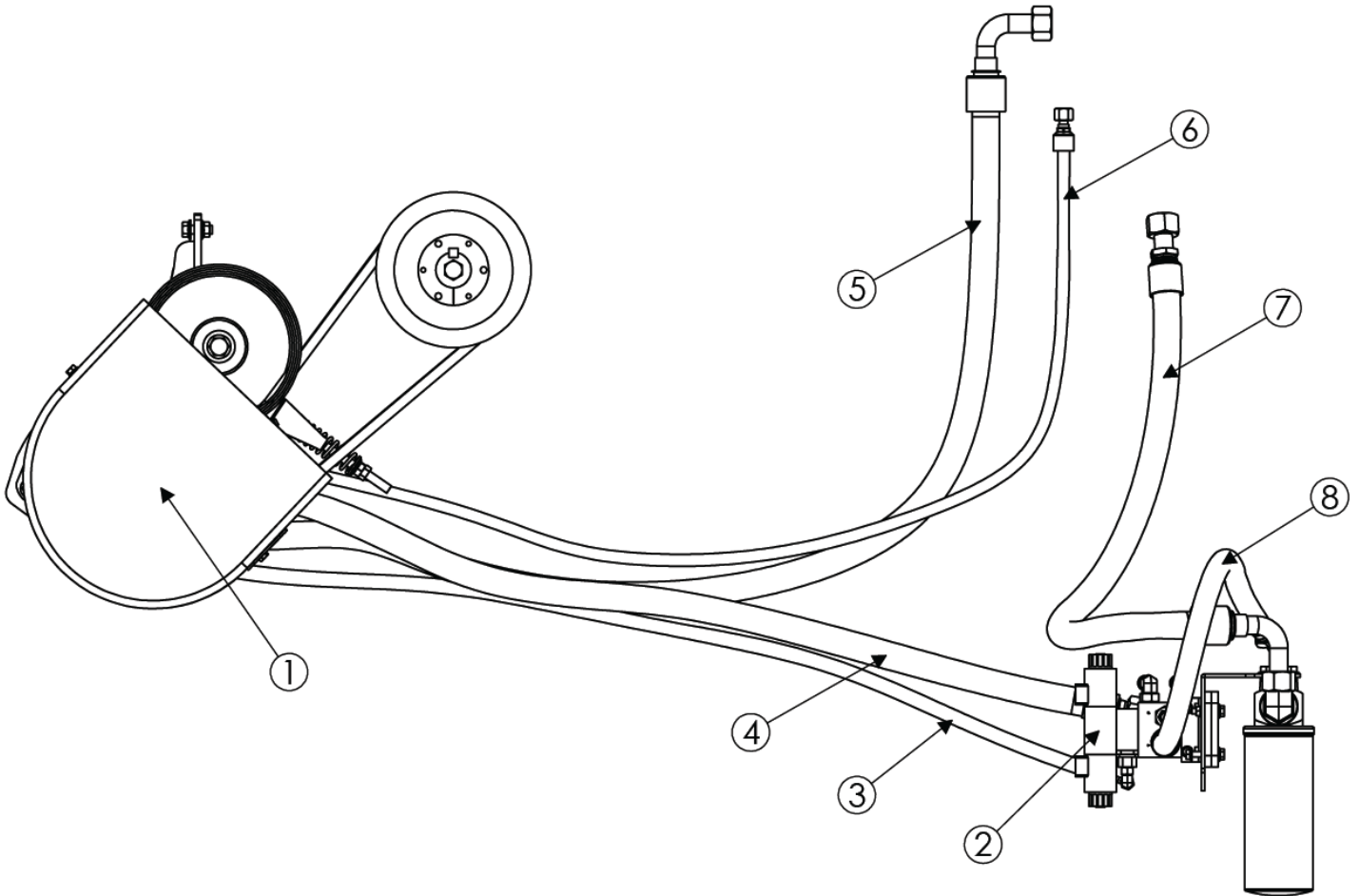
CODE 62 SPLIT FLANGE  
CONNECTOR KIT



Model 2975H Hillco Leveling System  
For Serial Numbers 2975H-1501 thru 2975H-1599

<b>HYDRAULIC COMPONENTS</b>				
<b>REF.</b>	<b>PART NO.</b>	<b>QTY.</b>	<b>DESCRIPTION</b>	<b>NOTES</b>
1	HC-139151	2	VALVE, 3-PORT COUNTERBALANCE	
..	HC-139181	2	BODY, COUNTERBALANCE VALVE	
..	HC-139161	2	CARTRIDGE, COUNTERBALANCE VALVE	
NS	HC-140361	2	SEAL KIT, COUNTERBALANCE VALVE	
2	HC-147511	2	CYLINDER, MAIN	
NS	HC-134251	2	SEAL KIT, MAIN CYLINDER	
3	HC-140342	1	CYLINDER, MASTER	
NS	HC-143201	1	SEAL KIT, MASTER CYLINDER	
4	HC-138582	1	CYLINDER, SLAVE	
NS	HC-134191	1	SEAL KIT, SLAVE CYLINDER	
<b>HYDRAULIC FASTENERS</b>				
<b>REF.</b>	<b>PART NO.</b>	<b>QTY.</b>	<b>DESCRIPTION</b>	<b>WHERE USED</b>
A	F-SSS-04F04	8	SET SECREW, SOCKET 1/4-28 X 1/4	ALL CYLINDERS
<b>CODE 62 SPLIT FLANGE CONNECTOR KIT ASSEMBLY (WITH FASTENERS)</b>				
ASM	HC-101843	2	CODE 62 SLT FLNG CONNECTOR KIT WITH O-RINGS	FWD AND REAR PROPULSION HOSE
<b>ONE HC-101843 KIT INCLUDES</b>				
5	HC-147551	3	O-RING, CODE 62 CONNECTOR	
6	LM-272241	1	PLATE, CODE 62	
7	HC-137901	2	CODE 62, #16 SPLIT FLANGE KIT	
B	F-HC8-07C44	4	HC8 7/16 X 2-3/4	CODE 62 SPLIT FLANGE KIT
B	F-HN8-07C	4	HN8 7/16-14	CODE 62 SPLIT FLANGE KIT
<b>CODE 62 SPLIT FLANGE CONNECTOR KIT ASSEMBLY - PRO-DRIVE</b>				
NS	LM-272161	2	HM PLT, CODE 62 1-1/4 UNION	
NS	HC-147621	4	O-RING, CODE 62 1-1/4"	HYDRO HOSE EXTENSIONS
NS	F-HC-14M090E	8	HC-10.9 M14 X 2.0 X 90	ELBOW TO ROTATIONAL ADAPTER
NS	F-HNS-14ME	8	HN-10.9 M14 X 2.0 STV	CODE 62 UNION

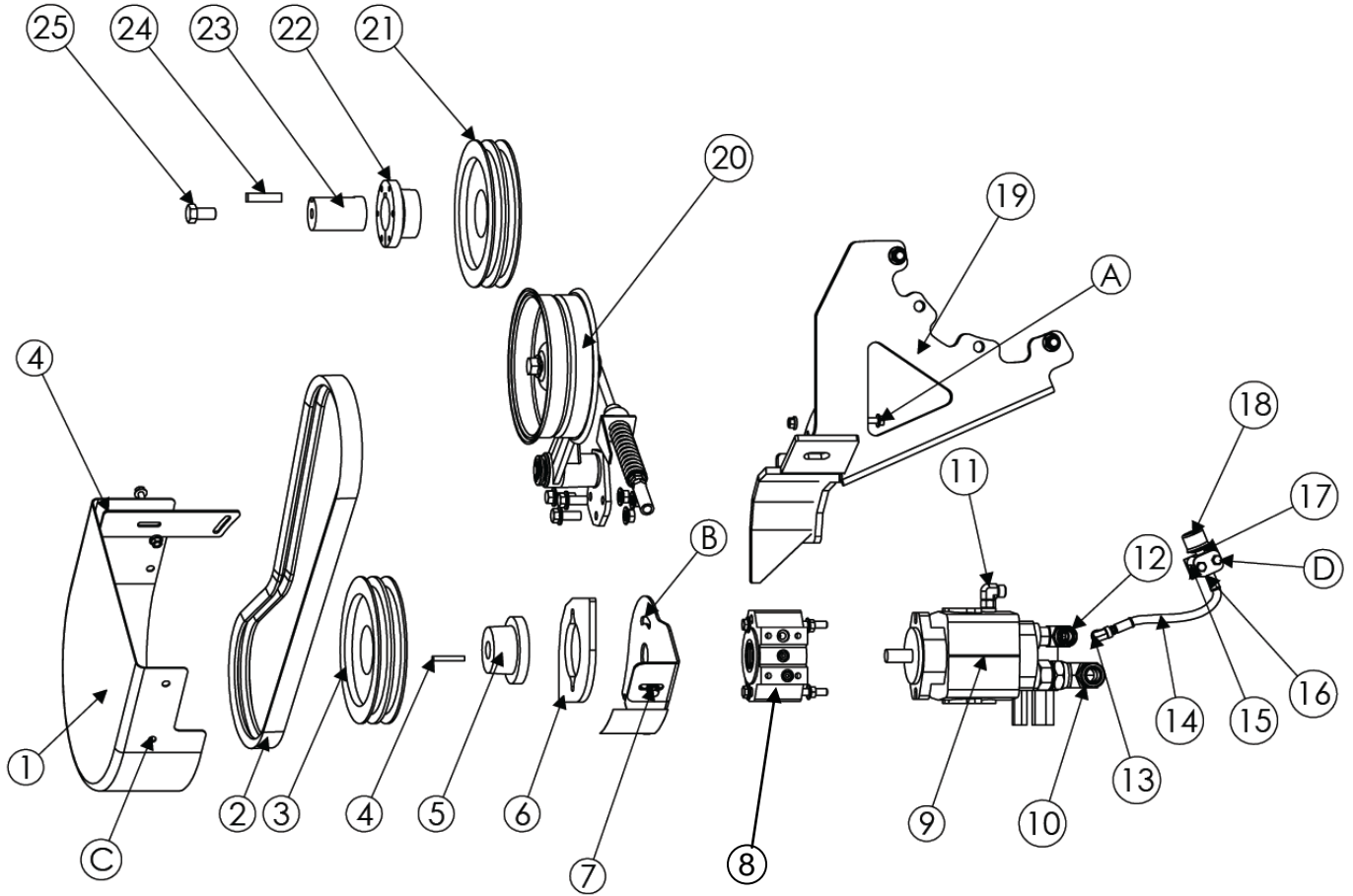
**PFC PUMP AND LEVELING MANIFOLD ASSEMBLY**



PFC PUMP OPTION COMPONENTS				
REF.	PART NO.	QTY.	PART NAME	NOTES
1	LA-263452	1	PFC PUMP ASSEMBLY	SEE PAGE 7-4
2	LA-263701	1	LEVELING MANIFOLD AND FILTER ASSEMBLY	SEE PAGE 7-7
3	LA-145721	1	1/4" 100R2 HOSE 63 IN #4 FORS X #4 FORS 90°	LOAD SENSE LINE
4	LA-145732	1	3/4" 100R2 HOSE 70 IN #12 FORS X #12 FORS	PRESSURE FROM PUMP TO MANIFOLD
5	LA-145741	1	1" 100R16 (1M2T) HOSE 62 IN #16 FORS X #16 FORS 90°	PUMP SUCTION
6	LA-134872	1	3/8" 100R2 HOSE 72 IN #6 FORS X #6 FORS 90°	PUMP CASE DRAIN TO RESERVOIR
7	LA-263571	1	1" 100R1 HOSE 36" #16 FORS X #16 FORS 90°	FILTER HOUSING OUTLET TO RESERVOIR
8	LA-263562	1	3/4" 100R2 HOSE 30" #12 FORS X #12 FORS 45°	MANIFOLD "T" PORT TO FILTER HOUSING INLET

Model 2975H Hillco Leveling System  
For Serial Numbers 2975H-1501 thru 2975H-1599

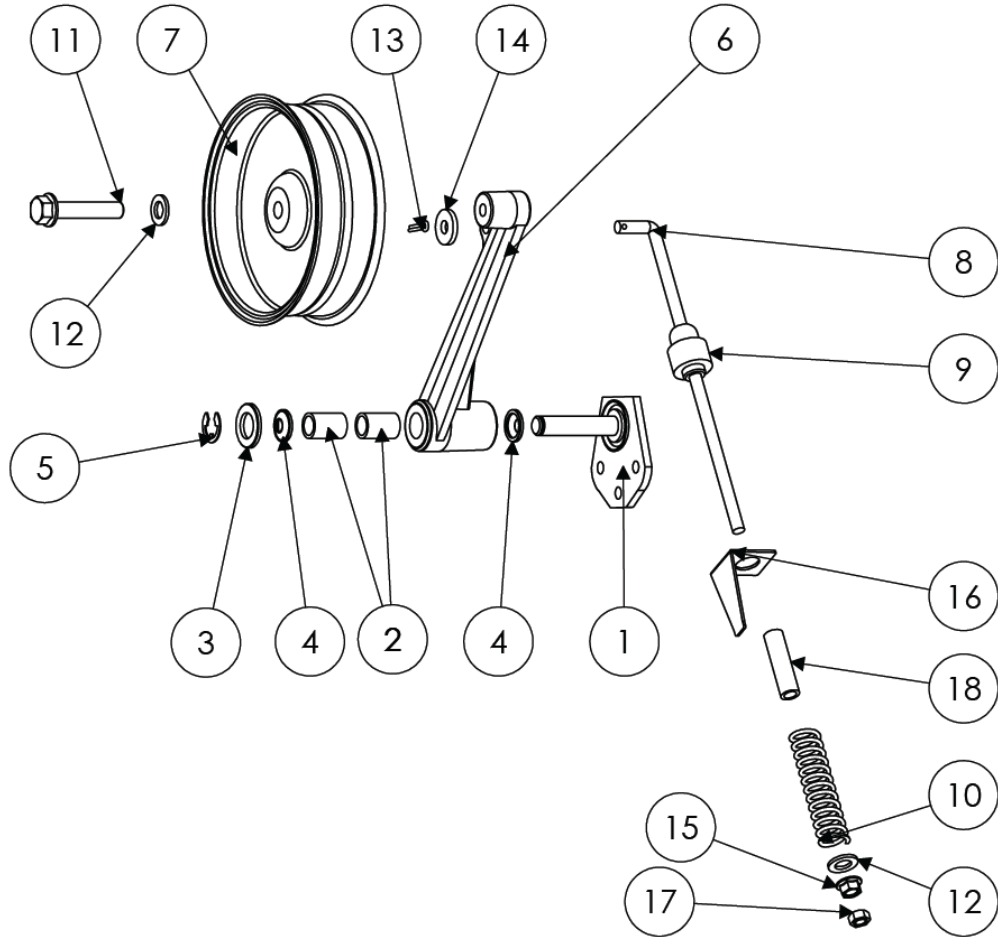
**PFC PUMP ASSEMBLY**



Model 2975H Hillco Leveling System  
For Serial Numbers 2975H-1501 thru 2975H-1599

<b>PFC PUMP OPTION COMPONENTS</b>				
<b>REF.</b>	<b>PART NO.</b>	<b>QTY.</b>	<b>PART NAME</b>	<b>NOTES</b>
ASM	LA-263452	1	HM ASM, PFC PUMP/IDLER	
1	MC-145851	1	CAP-CHOPPER COUNTERSHAFT	
2	MC-145781	2	DRIVE BELT	GATES 5VX750
3	LA-289261	1	HA ASM, DRIVEN SHIEVE	8.5" 2 GROOVE 5VX SHIEVE
4	F-KST-04X04X30	1	KEY, STR, 1/4" X 1-7/8	
5	MC-103071	1	DRIVEN SHIEVE HUB	
6	LP-263381	1	HM MOUNT, PFC PUMP	
7	LP-264082	1	HM PLT, MOUNT CAP	
8	HC-141531X	1	ADAPTER, OVER-HUNG LOAD (300 SERIES)	HM ASM, PFC PUMP
NS	LA-297731	-	OVER HUNG LOAD ADAPTER REBUILD KIT	
9	HC-133151	1	PUMP, HYDRAULIC PFC-116	HM ASM, PFC PUMP
10	HA-L-16FF16MF	1	#16 MORS X #16 FORS 90 DEGREE	
11	HA-L-6MF6MO	1	#6 MORB X #6 MORS 90°	
12	HA-S-12MO16MF	1	#12 MORB X #16 MORS STR.	
13	HA-L-4MO2FT	1	ADAPTER, ELBOW, 90°	
14	LA-133332	1	HOSE, SAE 30R7 FUEL LINE 3/16" 14" (NO ENDS)	
15	HC-145881	1	BEHRINGER STD CLAMP (.500 DIA)	
16	HC-145891	1	BEHRINGER STD COVER PLATE	
17	HA-U-2FP2FP	1	ADAPTER, UNION, STEEL	
18	HC-143251	1	METAL FILTER BREATHER, 10 MICRON	
19	LA-263432	1	HM ASM, MOUNT (PFC PUMP)	
20	LA-263371	1	IDLER ASM	SEE PAGE 28 FOR DETAILED VIEW
21	MC-103069	1	8.5" 2 GROOVE 5VX SHIEVE	
22	MC-103114	1	HUB, SK-1-15/16	
23	LM-263631	1	HM SHAFT, DRIVER (PFC PUMP)	RND STPRF G&P 1-15/16
24	LS-263861	1	HM KEY, PUMP DRIVE HUB	SQ 1018 CD 1/2 X 1/2
25	F-HC-16M030E	1	HC 10.9 M16 X 2 X 30	FASTENS DRIVE HUB
<b>PFC PUMP OPTION FASTENERS</b>				
<b>REF.</b>	<b>PART NO.</b>	<b>QTY.</b>	<b>PART NAME</b>	<b>WHERE USED</b>
A	F-HCF-12M030E	3	FLHC 10.9 M12 X 1.5 X 30	IDLER ARM ASM TO BRACKET
A	F-HNF-12ME	3	FLHN 10.9 M12 X 1.75	IDLER ARM ASM TO BRACKET
B	F-HCF-10M120E	2	FLHC 10.9 M10 X 1.50 X 120	PUMP/OHLA TO BRACKET
B	F-HNF-10ME	2	FLHN 10.9 M10 X 1.5	PUMP/OHLA TO BRACKET
C	F-HCF-08M020E	3	FLHC 10.9 M8 X 1.25 X 20	CAP TO MOUNTING BRACKET
C	F-HNF-08ME	3	FLHN 10.9 M8 X 1.25	CAP TO MOUNTING BRACKET
D	F-HC5-04C24	2	HC5 1/4-20 X 1-1/2	BEHRINGER CLAMP FOR OHLA BREATHER HOSE

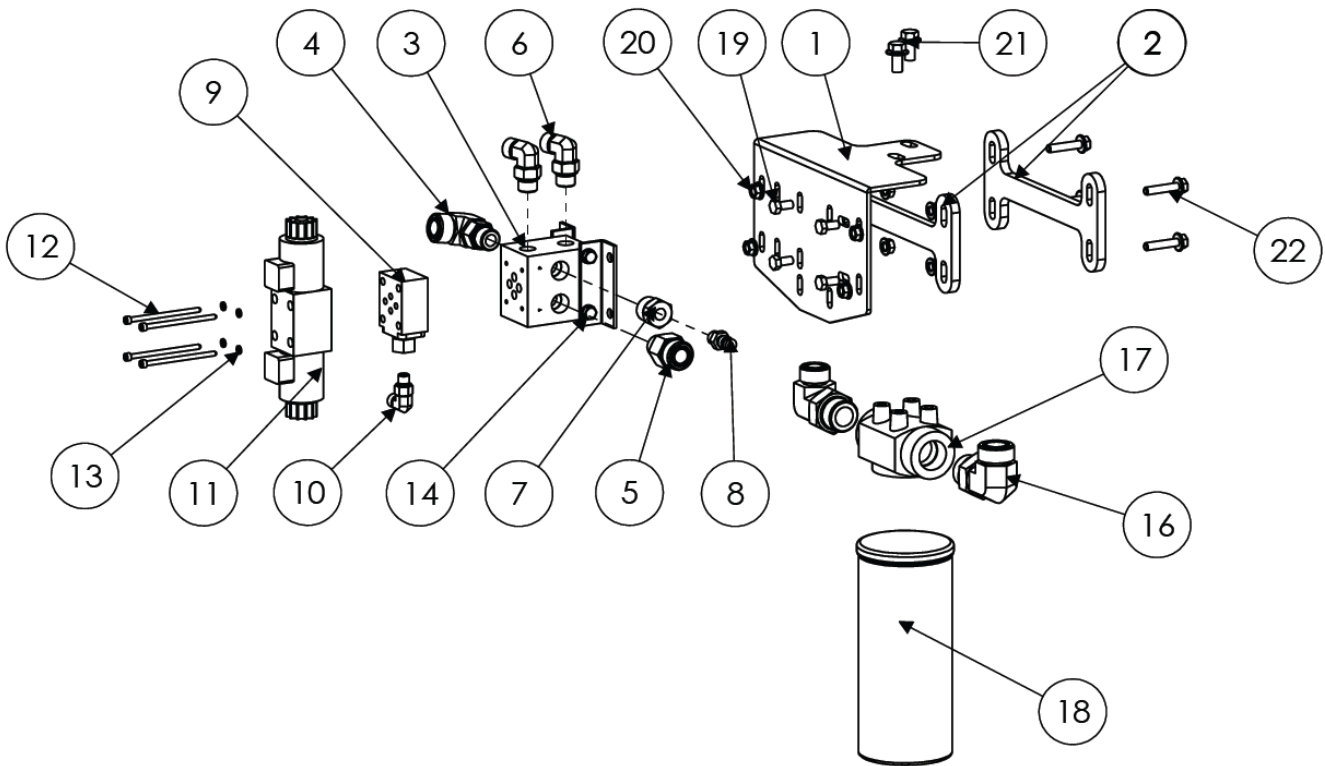
**PFC PUMP IDLER ASSEMBLY**



REF.	PART NO.	QTY.	PART NAME
1	MC-145531	1	PIN, PIVOT ASM
2	MC-145541	2	BUSHING (H171061)
3	MC-145551	1	WASHER, METALLIC, ROUND HOLE (24M7091)
4	MC-145561	2	SEAL (AA5607R)
5	F-SRE-14E	1	E-STYLE RETAINING RING 7/8 SHAFT
6	MC-145521	1	ARM (AH202772)
7	MC-145571	1	IDLER (AH204389)
8	MC-145581	1	HOOK BOLT (H118948)
9	MC-145591	1	PIVOT (H170141)

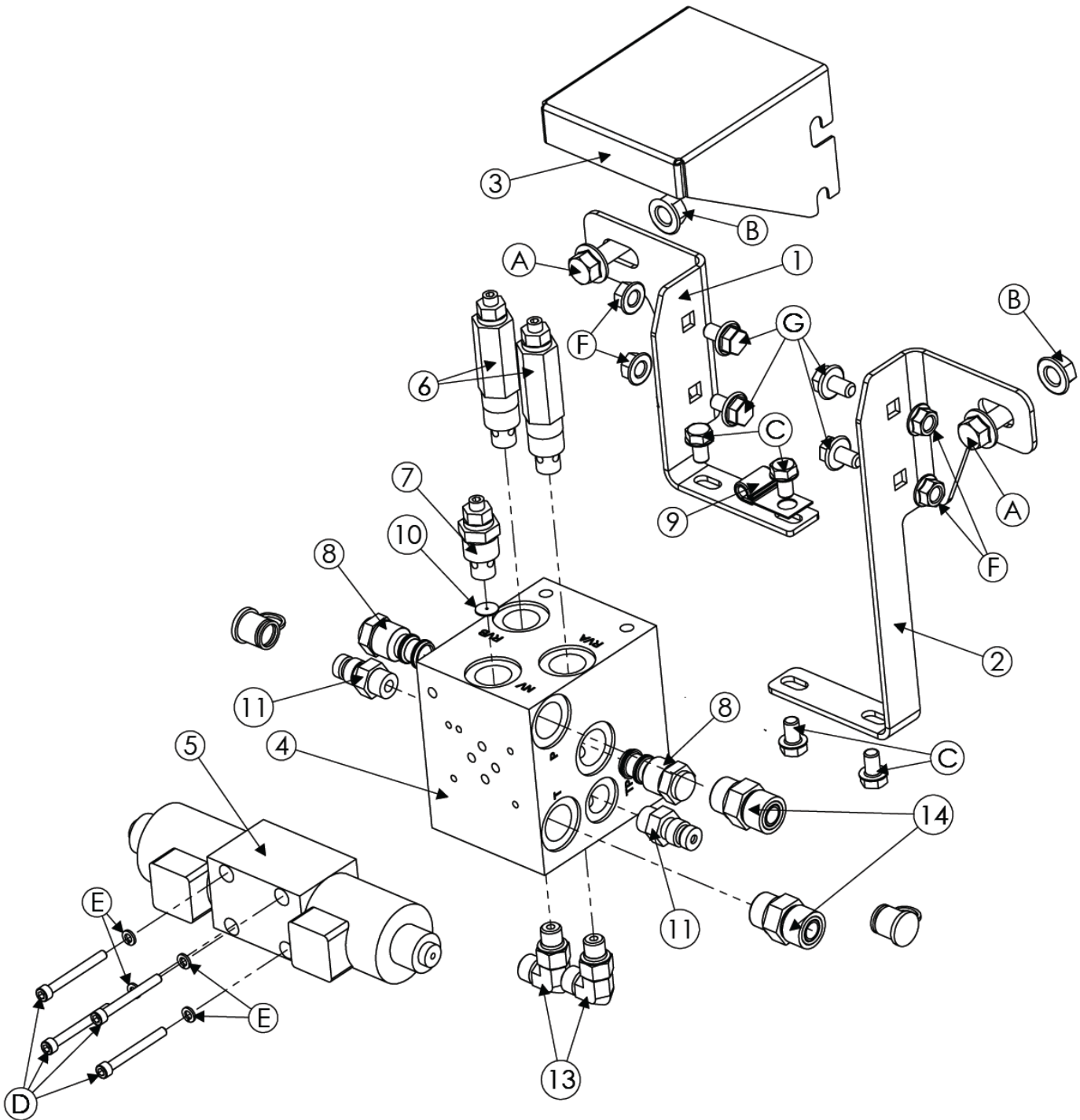
Model 2975H Hillco Leveling System  
For Serial Numbers 2975H-1501 thru 2975H-1599

**PFC LEVELING MANIFOLD**



REF.	PART NO.	QTY.	DESCRIPTION
1	LP-263312	1	MOUNT, MANIFOLD
2	LP-263321	2	PLATE, BACKING
3	HC-138861	1	DO3 Parallel MANIFOLD (1 Station)
4	HA-L-12MF10MO	1	#10 MORB X #12 MORS 90°
5	HA-S-12MF10MO	1	#10 MORB X #12 MORS STRAIGHT
6	HA-L-8MF8MO	2	#8 MORS X #8 MORB 90°
7	HA-S-6FO10MO	1	#6 FORB X #10 MORB STRAIGHT
8	HC-143991	1	COUPLER, QUICK-CONNECT HYD
9	HC-101264	1	LOAD SENSE SHUTTLE
10	HA-L-4MF4MO	1	#4 MORB X #4 MORS 90°
11	HC-140411	1	VALVE, PRO DIRECTIONAL, D03
12	F-SHC-#10C-52	4	SOCKET HEAD CAP SCREW, COURSE, #10 X 52
13	F-LW-#10	4	WASHER, LOCK, SPLIT RING, #10
14	F-HCF-05C08	4	SCREW, FLANGED HEX CAP, GR5, COURSE, 5/16 X 1/2
15	HA-L-16MO12MF	1	#16 MORB X #16 MORS 90°
16	HA-L-16MF16MO	1	#16 MORS X #16 MORB 90°
17	FILTERHEAD	1	JOHN DEERE PART NO. AH227847
18	FILTER	1	JOHN DEERE PART NO. AH128449
19	F-HC-8M016F	4	HEX CAP SCREW, METRIC, 8MM X 16MM
20	F-HNF-08ME	8	NUT, FLANGED HEX, 8 MM
21	F-HCF-10M020E	2	SCREW, FLANGED HEX CAP, 10MM X 20MM
22	F-HCF-08M040E	4	SCREW, FLANGED HEX CAP, 8MM X 40MM

### HEADER TRIM MANIFOLD



Model 2975H Hillco Leveling System  
For Serial Numbers 2975H-1501 thru 2975H-1599

<b>TRIM MANIFOLD COMPONENTS</b>				
<b>REF.</b>	<b>PART NO.</b>	<b>QTY.</b>	<b>PART NAME</b>	<b>NOTES</b>
<b>ASM</b>	<b>LA-263723</b>	<b>1</b>	<b>MANIFOLD ASM, TRIM</b>	
1	LP-273881	1	HM PLT, MANIFOLD MOUNT (LEFT)	
2	LP-273871	1	HM PLT, MANIFOLD MOUNT (RIGHT)	
3	LM-286231	1	HM SHTM MANFOLD SHIELD	
4	HC-145441	1	MANIFOLD, CUSTOM TRIM	
5	HC-143011	1	VALVE, DIRECTIONAL CONTROL, BANG/BANG	
6	HC-145431	2	RELIEF, POPPET DIRECT ACTING	SET AT 1900 +/- 100PSI
7	HC-145501	1	VALVE, NEEDLE	
8	HC-145511	2	PILOT OPERATED CHECK	
9	HC-146661	1	CLAMP, COATED J	JD# T32231
10	LM-265561	1	ORIFICE, NEEDLE VALVE	
11	HC-143991	2	HYDRAULIC QUICK-CONNECT COUPLER AH125760	
12	HC-144001	2	COVER, DUST	JD# 77175
13	HA-L-4MF4MO	2	#4 MORB X #4 MORS 90°	"A" AND "B" PORTS
14	HA-S-8MF8MO	2	#8 MORB X #8 MORS STRIAGHT	"P" AND "T" PORTS
<b>TRIM MANIFOLD FASTENERS</b>				
<b>REF.</b>	<b>PART NO.</b>	<b>QTY.</b>	<b>PART NAME</b>	<b>WHERE USED</b>
A	F-HCF-10M030E	2	FLHC 10.9 M10 X 1.50 X 30 PLT	TRIM MANIFOLD MOUNT
B	F-HNF-10ME	2	FLHN-10.9 M10 X 1.50 PLT	TRIM MANIFOLD MOUNT
C	F-HCF-05C08	4	FLHC 5/16-18 X1/2	MANIFOLD TO MANIFOLD MOUNT
D	F-SHC-#10C28	4	SHCS 10-24 X 1-3/4	DIRECTIONAL CONTROL TO MANIFOLD
E	F-LW-#10	4	LW #10	DIRECTIONAL CONTROL TO MANIFOLD
F	F-HNF-08ME	4	NUT, FLANGED HEX, METRIC	SHIELD
G	F-HCF-08M016E	4	FLHC-10.9 M8 X 1.5 X 16	SHIELD



Model 2975H Hillco Leveling System  
For Serial Numbers 2975H-1501 thru 2975H-1599

**HYDRAULIC HOSES**

REF.	PART NO.	QTY.	DESCRIPTION	NOTES
<b>LEVELING HOSES</b>				
NS	LA-272762	1	3/8" 100R2 49" #6 FORS X #8 FORS 90°	LEFT PILOT OPERATED CHECK VALVE #3 TO RIGHT PILOT OPERATED CHECK VALVE #2
NS	LA-271862	1	1/2" 100R2 53.5" #8 FORS X #8 FORS 90°	RIGHT PILOT OPERATED CHECK VALVE #2 TO LEFT MAIN CYLINDER ROD
NS	LA-271882	1	1/2" 100R2 55" #8 FORS X #8 FORS 90°	LEFT PILOT OPERATED CHECK VALVE #2 TO RIGHT MAIN CYLINDER ROD
NS	LA-272751	1	3/8" 100R2 HOSE 21" #6 FORS X #8 FORS	RIGHT PILOT OPERATED CHECK VALVE #3 TO RIGHT MAIN CYLINDER ROD
NS	LA-272571	1	1/2" 100R2 252" #8 FORS 90° X #8 FORS	LEVELING VALVE PORT "A" TO LEFT MAIN LEVELING ROD
NS	LA-272571	1	1/2" 100R2 252" #8 FORS X #8 FORS 90°	LEVELING VALVE PORT "B" TO LEFT MAIN LEVELING CYLINDER PILOT OPERATED CHECK VALVE #2
<b>TRIM HOSES</b>				
NS	LA-139141	2	1/4" 100R2 110-1/2" #4 FORS X #4 FORS	BASE PORT OF MASTER CYLINDER MARKED "B" & ROD PORT OF MASTER CYLINDER MARKED "R"
NS	LA-139113	2	1/4" 100R2 54" #4 FORS X #4 FORS	MANIFOLD "B" PORT TO BASE PORT & MANIFOLD "A" PORT TO ROD PORT
NS	LA-139532	1	1/4" 100R2 260" #4 FORS X #6 FORS	SLAVE BASE TO TEE MARKED "B"
NS	LA-139542	1	1/4" 100R2 273" #4 FORS X #6 FORS	SLAVE ROD TO TEE MARKED "R"
<b>GREASE HOSES</b>				
NS	LA-138951	1	3/16 R1 40" 1/8 MPT X 1/8 MPT	RIGHT HAND MAIN LEVELING CYLINDER TO BULKHEAD #1
NS	LA-138963	1	3/16 R1 54" 1/8 MPT X 1/8 MPT	MAIN PIVOT TO BULKHEAD #3
NS	LA-138942	1	3/16 R1 33-1/2" 1/8 MPT X 1/8 MPT	MASTER BASE TO BULKHEAD #4
NS	LA-138974	2	3/16 R1 77" 1/8 MPT X 1/8 MPT	LEFT HAND MAIN LEVELING CYLINDER BASE TO BHEAD #2 & MASTER CYLINDER ROD END
<b>PUMP &amp; MANIFOLD HOSES</b>				
NS	LA-263571	1	1" 100R1 36" #16 FORS X #16 FORS 90°	RETURN LINE FROM FILTER OUTLET TO RESERVOIR
<b>HYDRO HOSES</b>				
NS	LA-273301	1	1 100R15 89" CODE 62 SPLT FLNG 90° SHORT DROP X CODE 62 SPLT FLNG STR	HYDROSTAT FRONT HOSE
NS	LA-140383	1	1 100R15 79" CODE 62 SPLT FLNG 90° SHORT DROP X CODE 62 SPLT FLNG STR	HYDROSTAT REAR HOSE
NS	LA-140402	1	3/4 100R1 HOSE 80" #12 MORS X #12 FORS	HYDRO MOTOR CASE DRAIN
<b>HYDRO HOSES (9870 PRO-DRIVE)</b>				
NS	LA-274141	1	1-1/4" 100R15 124" CODE 62 SLT FLNG 90° XR X CODE 62 SPLT FLNG STR	HYDROSTAT REAR
NS	LA-274151	1	1-1/4" 100R15 124" CODE 62 SLT FLNG 90° XR X CODE 62 SPLT FLNG STR	HYDROSTAT FORWARD

**HYDRAULIC HOSES (CONTINUED)**

<b>PROPORTIONATOR HOSES</b>				
NS	LA-273461	2	3/8" 100R2 15" #8 FORS X #8 MORS	EXTENDS REAR FILTER LINE & FILTER TO VAVLE BLOCK
NS	LA-273861	1	3/8" 100R2 15" #6 FORS X #6 MORS	EXTENDS LUBE LINE PRO-DRIVE
NS	LA-274161	1	3/8" 100R2 48" #6 FORS 90° X #6 FORS	CASE DRAIN PROPORTIONATOR PUMP
NS	LA-274171	1	3/4" 100R2 16" #12 MORS X #12 FORS 90°	EXTENDS PROP MOTOR RETURN
NS	LA-274181	1	1" 100R4 35" #16 FORS X #16 FORS	SUCTION AST PUMP
NS	LA-274191	1	5/8" 100R2 16" #10 MORS X #10 FORS 90°	EXTENDS PROP MOTOR SUPPLY
NS	LA-274211	1	5/8" 100R2 62" #12 FORS X #10 FORS 90°	PROPORTIONATOR PUMP TO FILTER
<b>BRAKE HOSES</b>				
NS	LA-273861	2	3/8" 100R2 15" #6 FORS X #6 MORS	EXTENDS BRAKE LINES

Model 2975H Hillco Leveling System  
For Serial Numbers 2975H-1501 thru 2975H-1599

**HYDRAULIC ADAPTERS**

REF.	PART NO.	QTY.	DESCRIPTION	NOTES
<b>MAIN CYLINDER ADAPTERS</b>				
NS	HA-L-8MO8MO	2	#8 MORB X #8 MORS 90°	LEFT & RIGHT PILOT OPERATED CHECK VALVE #3
NS	HA-L-8MF8MO	4	#8 MORS X #8 MORB 90°	LEFT PILOT OPERATED CHECK VALVE #2 & LEFT CYLINDER ROD
NS	HA-Q-8MF8MO	1	#8 ORS STR THREAD BRANCH TEE	RIGHT PILOT OPERATED CHECK VALVE #2
NS	HA-M-8F	3	#8 ORS SWIVEL NUT RUN TEE	LEFT PILOT OPERATED CHECK VALVE #2 & LEFT & RIGHT MAIN CYLINDER ROD
NS	HA-L-6MF6MO	2	#6 MORB X #6 MORS 90°	LEFT & RIGHT PILOT OPERATED CHECK VALVE #3
NS	HA-S-8MF8MO	1	#8 MORS X #8 MORB STR	RIGHT MAIN CYLINDER ROD
<b>MASTER CYLINDER ADAPTERS</b>				
NS	HA-L-4MF6MO	2	#4 MORS X #6 MORB 90°	MASTER CYLINDER ROD AND BASE
<b>SLAVE CYLINDER ADAPTERS</b>				
NS	HC-147491	1	CYLINDER, SLAVE, SPHERICAL BEARINGS BOTH ENDS	
NS	HA-L-6MF6MO	2	#6 MORS X #6 MORB 90°	SLAVE ROD PORT
<b>GREASE FITTINGS ADAPTERS</b>				
NS	HC-138011	5	1/4-28 STRAIGHT ZERK	ALL GREASE LINES
NS	HC-135881	1	1/4-28 MALE X 1/8 FPT STR	MASTER ROD
NS	HC-135771	3	1/4-28 MALE X 1/8 FPT 90°	MASTER CYLINDER BASE & MAIN LEVELING CYLINDER BASE
NS	HA-S-2FP2MN	6	1/8" NPSM X 1/8" FPT BULKHEAD CONNECTOR	GREASE BULKHEAD MOUNT & MAIN PIVOT PIN
NS	HA-NJ-2FN	5	1/8" NPSM BULKHEAD LOCKNUT	BULKHEAD CONNECTOR
<b>MANIFOLD ADAPTERS</b>				
NS	HA-L-4MF4MO	2	#4 MORB X #4 MORS 90°	"A" AND "B" PORTS
NS	HA-S-8MF8MO	2	#8 MORB X #8 MORS STR	"P" AND "T" PORTS
<b>USED ON JOHN DEERE CONTOUR MASTER HOSES IF COMBINE ALREADY HAS CONTOUR MASTER</b>				
NS	HA-E-6MF	1	#6 MORS PLUG	TO CAP OFF MANIFOLD PORTS
NS	HA-E-4MF	2	#4 MORS PLUG	TO CAP OFF MANIFOLD PORTS

Model 2975H Hillco Leveling System  
For Serial Numbers 2975H-1501 thru 2975H-1599

## 8 MISCELLANEOUS

MISCELLANEOUS DOCUMENTS AND LABELS				
REF.	PART NO.	QTY.	DESCRIPTION	NOTES
NS	D-050611SLR01	1	WARRANTY REG CARD	
NS	D-050628LJH01A	3	2955S-70S DEALER PDI & INSTALL CHECKLIST	
NS	D-090316DJC01A	1	2975H OPERATOR'S MANUAL	
NS	D-100725ADL01A	1	2975H PARTS MANUAL	
NS	LA-256001	1	TAG, SERIAL NUMBER 2975H	
NS	LL-133741	5	LABEL, GREASE 50 HRS	MAIN CYLINDERS, MASTER CYLINDER, OVERCARRIAGE BULKHEAD, UNDERCARRIAGE BULKHEAD
NS	LL-142091	2	DECALS, JD HILLSIDE LEV SYSTEM	GULL WING DOORS
NS	LL-143621	2	DANGER, AVOID CRUSHING INJURY	IN AREA NEAR SAFETY STOP STORAGE LOCATION
NS	LL-147651	1	LABEL, FEMA MEMBER TAG	NEAR SERIAL NUMBER TAG
NS	LL20-100782	1	CAUTION - LEVELING SYSTEM CAB	WINDOW IN CAB (PKG)
NS	LL20-100783	4	DANGER - CRUSHING HAZARD	DROP AXLE, UNDERCARRIAGE (FRONT & BACK)
NS	LL20-100784	2	DECAL, DANGER PINCH POINT	RH & LH UPPER TRANS FACE PLT
NS	LL20-100785	1	CAUTION - MOVING STEP	ON LADDER CHANNEL
NS	LL20-100787	1	CAUTION - LEVELING SYSTEM HAZARD	ON LADDER CHANNEL
NS	LL20-100788	2	DANGER - HYDAULIC HAZARD	MAIN CYLINDERS
NS	LL-239412	1	LABEL, STEERING WHEEL	TIED TO STEERING WHEEL DURING INSTALLATION
NS	HC-143601	1	CLAMP, HOSE 1-1/8" RC W/ 3/8" HOLE	CARRIAGE

Model 2975H Hillco Leveling System  
For Serial Numbers 2975H-1501 thru 2975H-1599

**9 PART NUMBER INDEX**

PART NUMBER	PAGE		PART NUMBER	PAGE		PART NUMBER	PAGE
D-050611SLR01	7-8		F-HCF-08M035F	5-2		HA-L-6MF6MO	7-7
D-050628LJH01A	7-8		F-HCF-10M020E	3-4		HA-L-8MF8MO	7-7
D-090316DJC01A	7-8		F-HCF-10M020F	2-6		HA-L-8MO8MO	7-7
D-100725ADL01A	7-8		F-HCF-12M020E	2-6		HA-M-8F	7-7
EC-100557	6-2		F-HCF-12M040F	3-4		HA-NJ-2FN	7-7
EC-100692	6-2		F-HCF-16M050E	4-2		HA-Q-8MF8MO	7-7
EC-133281	6-4		F-HCF-8M030F	3-4		HA-S-2FP2MN	7-7
EC-136941	6-4		F-HN-#10C	6-2		HA-S-8MF8MO	7-7
EC-138781	6-2		F-HN8-07C	7-2		HC-101843	7-2
EC-141741	6-4		F-HNF-#10C	6-2		HC-134191	7-2
EC-141751	6-4		F-HNF-#6C	6-2		HC-134251	7-2
EC-141761	6-4		F-HNF-04C	6-2		HC-135771	7-7
EC-141771	6-4		F-HNF-08MF	3-4, 5-2		HC-135881	7-7
EC-141841	6-2		F-HNF-10MF	2-6		HC-137901	7-2
EC-142101	6-2		F-HNJ-05C	5-2		HC-138011	7-7
EC-142121	6-2		F-HNS-12C	2-6		HC-138582	7-2
EC-145671	6-4		F-HNS-12ME	3-4, 5-2		HC-139151	3-2, 7-2
EC-146481	6-2		F-HNS-14ME	7-2		HC-139161	7-2
EC-146501	6-4		F-HNS-16ME	2-6		HC-139181	7-2
EC-146511	6-4		F-LW-#10	7-4		HC-140313	7-2
EC-146521	6-4		F-LW-04	6-2		HC-140342	7-2
EC-146531	6-4		F-LW-05	5-2		HC-140361	7-2
EC-146541	6-2, 6-4		F-LW-08A	2-4, 2-6		HC-143011	7-4
EC-146581	6-4		F-MB-14NR14	2-6		HC-143201	7-2
ET-ST-20#10	6-4		F-MB-14NR40	2-6		HC-143601	7-8
ET-ST-2001	6-4		F-PHM-#10C08	6-2		HC-143991	7-4
F-CB-10M030F	2-6		F-PHM-#10C16	6-2		HC-144001	7-4
F-FHS-8M016E	2-6		F-PHM-#10C28	6-2		HC-145431	7-4
F-FWH-12	2-6		F-PHM-#6C06	6-2		HC-145441	7-4
F-HC-08M025F	5-2		F-PHM-#6C08	6-2		HC-145501	7-4
F-HC-12M030F	5-2		F-PHM-04C24	6-2		HC-145511	7-4
F-HC-12M050F	5-2		F-PHM-04C36	6-2		HC-146661	7-4
F-HC-12M065F	5-2		F-PSL-04X48	3-4		HC-147491	2-2
F-HC-14M090E	7-2		F-SHC-#10C28	7-4		HC-147491	7-7
F-HC-16M050E	2-6		F-SHC-#10C32	7-4		HC-147501	3-2
F-HC-16M120E	2-6		F-SHC-10M070F	2-6		HC-147511	3-2
F-HC5-04C12	6-2		F-SSS-04F04	3-4, 7-2		HC-147551	7-2
F-HC5-05C08	7-4		F-SSS-06C08	2-4		HC-147621	7-2
F-HC8-07C44	7-2		F-UDS-#7X06	3-4		LA-138942	7-5
F-HC8-08F20	2-4, 2-6		HA-E-4MF	7-7		LA-138951	7-5
F-HC8-12C48	2-6		HA-E-6MF	7-7		LA-138963	7-5
F-HCF-05C08	7-4		HA-L-4MF4MO	7-7		LA-138974	7-5
F-HCF-06M016E	6-2		HA-L-4MF6MO	7-7		LA-139113	7-5

Model 2975H Hillco Leveling System  
For Serial Numbers 2975H-1501 thru 2975H-1599

**PART NUMBER INDEX (CONTINUED)**

PART NUMBER	PAGE		PART NUMBER	PAGE		PART NUMBER	PAGE
LA-139141	7-5		LA-271921	5-2		LM-265561	7-4
LA-139532	7-5		LA-271951	5-2		LM-267981	5-2
LA-139542	7-5		LA-272571	7-5		LM-272161	7-2
LA-140383	7-5		LA-272751	7-5		LM-272241	7-2
LA-140402	7-5		LA-272762	7-5		LM-274241	2-2
LA-228893	2-2		LA-273301	7-5		LP-230241	3-2
LA-229022	2-2		LA-273461	7-6		LP-232162	2-2
LA-229071	2-2, 3-2		LA-273851	2-2		LP-234653	6-2
LA-230552	3-2		LA-273861	7-6		LP-235092	4-2
LA-236542	5-2		LA-274111	7-5		LP-247961	3-2
LA-236552	5-2		LA-274141	7-5		LP-249321	3-2
LA-236563	5-2		LA-274151	7-5		LP-249861	2-2
LA-238761	5-2		LA-274161	7-6		LP-249871	2-2
LA-243691	2-2		LA-274171	7-6		LP-251002	2-2
LA-247482	3-2		LA-274181	7-6		LP-261121	3-2
LA-251632	2-2		LA-274191	7-6		LP-266271	2-2
LA-255644	6-4		LA-274211	7-6		LP-271691	2-2
LA-255821	6-4		LA-274261	2-2		LP-272101	3-2
LA-256001	3-2, 7-8		LA-274291	2-2		LP-274251	2-2
LA-260093	6-2		LL-133741	7-8		LP-276521	6-2
LA-261191	6-2		LL-142091	7-8		LS-212701	2-2
LA-263521	7-4		LL-143621	7-8		LS-244471	2-2, 2-4
LA-263571	7-5		LL-147651	7-8		LTP-241721	2-2
LA-263723	7-4		LL20-100782	7-8		MC-100548	2-2
LA-264171	2-2		LL20-100783	7-8		MC-100764	7-4
LA-265541	4-2		LL20-100784	7-8		MC-101339	2-2
LA-265581	6-2, 6-4		LL20-100785	7-8		MC-134261	3-2
LA-265772	6-4		LL20-100787	7-8		MC-134271	3-2
LA-265782	6-2		LL20-100788	7-8		MC-134921	5-2
LA-265791	6-4		LL-239412	7-8		MC-134931	5-2
LA-265803	6-2		LM-226532	2-2, 2-4		MC-135491	2-2
LA-265831	6-2		LM-226841	2-2		MC-135511	2-2
LA-266031	6-2		LM-229142	2-2		MC-135531	2-2
LA-268261	6-4		LM-229152	2-2		MC-136151	2-2
LA-268351	6-4		LM-229161	2-2		MC-136921	2-2, 2-4
LA-271261	4-2		LM-229171	2-2		MC-137441	2-2
LA-271271	4-2		LM-229192	2-2		MC-138641	3-2
LA-271732	2-2		LM-241271	5-2		MC-138651	3-2
LA-271791	3-2		LM-255331	6-2		MC-139341	2-2
LA-271802	3-2		LM-260301	6-2		MC-139351	2-2
LA-271862	7-5		LM-262811X	2-2		MC-143711	3-4
LA-271882	7-5		LM-265501X	6-2		MC-147671	2-2
LA-271911	5-2		LM-265511X	6-2			