

**Model 2800**  
**Hillside Leveling System**  
**Parts Manual**

SN 2800-1103 thru 2800-1127

D-060111ADL01A







**2800 Leveling System**  
*for 2188 and 2388 CASE-IH Combines*

**TABLE OF CONTENTS**

<b>1 GENERAL INFORMATION</b> .....	<b>1-3</b>
Serial Number Location.....	1-3
Text Format and Illustrations.....	1-3
Abbreviations.....	1-3
Right and Left Identification.....	1-3
Catalog Revisions and Supplements.....	1-3
Parts Orders.....	1-3
<b>2 TRANSITION</b> .....	<b>2-1</b>
Radial Pin Slip Clutch and Header Lift Cylinder Extensions.....	2-3
Transition Fasteners.....	2-5
<b>3 CARRIAGE</b> .....	<b>3-1</b>
<b>4 Y-BRACE</b> .....	<b>4-1</b>
<b>5 DROP AXLE</b> .....	<b>5-1</b>
<b>6 LADDER</b> .....	<b>6-1</b>
<b>7 ELECTRICAL BOX</b> .....	<b>7-1</b>
Connectors.....	7-3
Electrical Cables.....	7-5
<b>8 HYDRAULICS</b> .....	<b>8-1</b>
Hydraulic Manifold.....	8-3
Hydraulic Hoses.....	8-5
Hydraulic Hoses (Continued).....	8-6
Hydraulic Adapters.....	8-7
<b>9 MISCELLANEOUS</b> .....	<b>9-1</b>
<b>10 PART NUMBER INDEX</b> .....	<b>10-1</b>
Part Number Index (Continued).....	10-2

Model 2800 Hillco Leveling System  
For Serial Numbers 2800-1103 thru 2800-1127

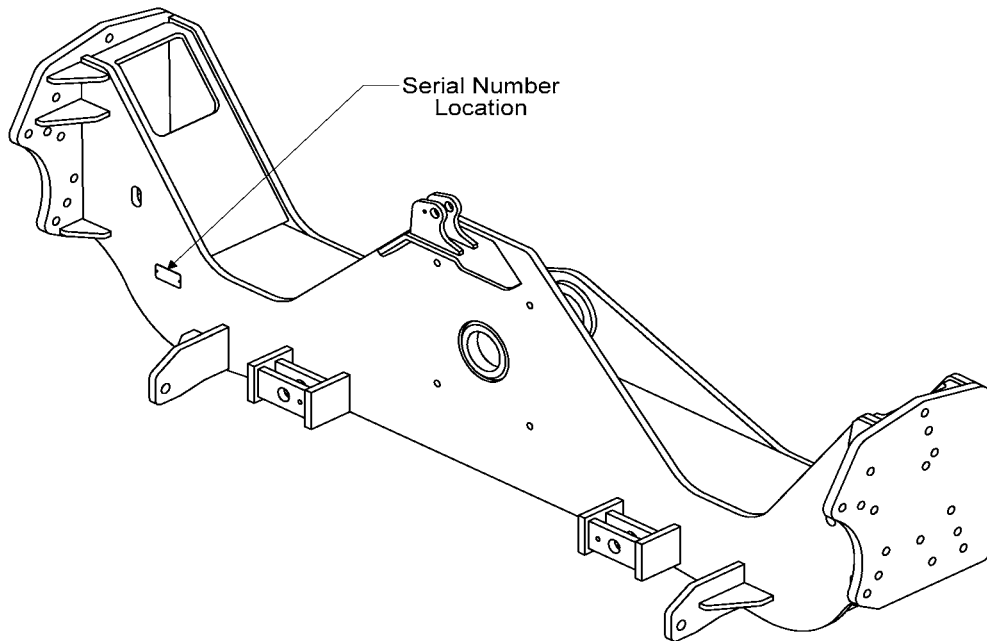
Hillco Technologies, Inc.  
107 1<sup>st</sup> Avenue  
Nezperce Id. 83543

Fax	208.937.2280
Phone	208.937.2461
Toll Free	800.937.2461

[www.hillcotechnologies.com](http://www.hillcotechnologies.com)

## 1 GENERAL INFORMATION

### SERIAL NUMBER LOCATION



### TEXT FORMAT AND ILLUSTRATIONS

The arrangement of this parts catalog is for easy identification of parts. All parts are illustrated in exploded views in proper relation to each other. Some diagrams refer to other pages for further information. Reference numbers used in the illustrations refer to line numbers in the part lists. The part lists appear to the right of all diagrams and correspond with those diagrams. Included in the part lists, along with the reference numbers are part numbers, part descriptions and the quantity of the part required per leveling system.

### ABBREVIATIONS

**SN** "Serial Number" The four digits shown in the SN column refer to the last four digits in the Hillco serial number. Each Model 2800 system uses the following format:  
2800-XXXX (sequential numbers).

**ASM** "Assembly" refers to a whole grouping of parts (usually shown in the diagram corresponding with the page where "ASM" is shown).

**NS** "Not Shown" refers to a part that is not depicted in the illustration.

### RIGHT AND LEFT IDENTIFICATION

The reference to right-hand and left-hand in this catalog is identified by the operator standing at the rear of the machine looking toward the front of the machine (in normal forward travel).

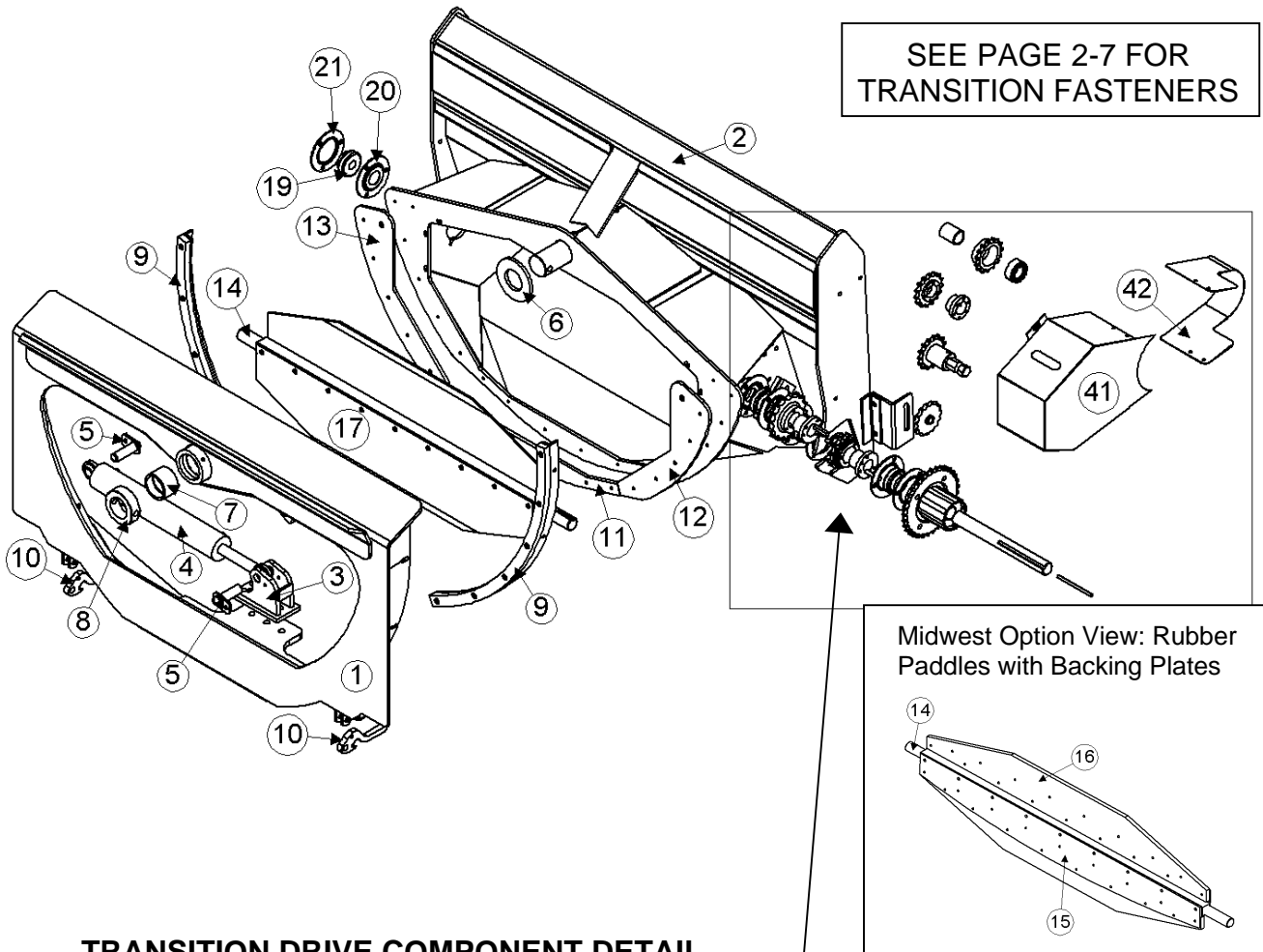
### CATALOG REVISIONS AND SUPPLEMENTS

Changes to the product may make it necessary to revise or add pages to this catalog. A cover sheet will list all pages released in a revision or supplement. All revised and new pages must be put into the parts catalog as soon as they are received.

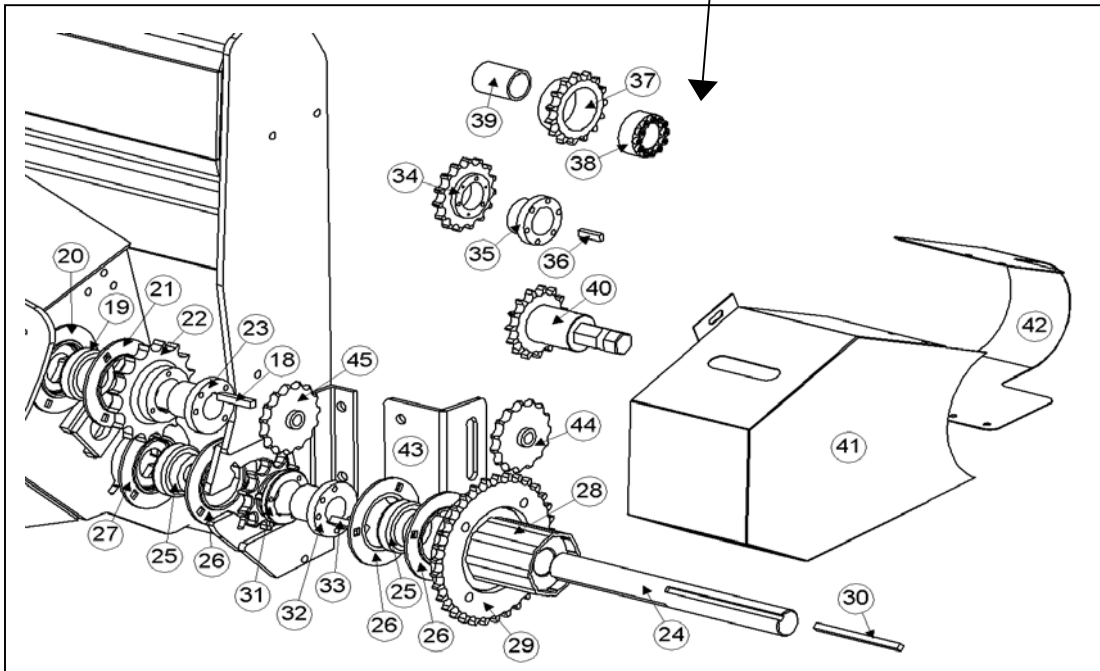
### PARTS ORDERS

Orders must specify product model, serial number, correct part number, complete description, quantity required, method of shipment, shipping address, and billing address.

## 2 TRANSITION



### TRANSITION DRIVE COMPONENT DETAIL

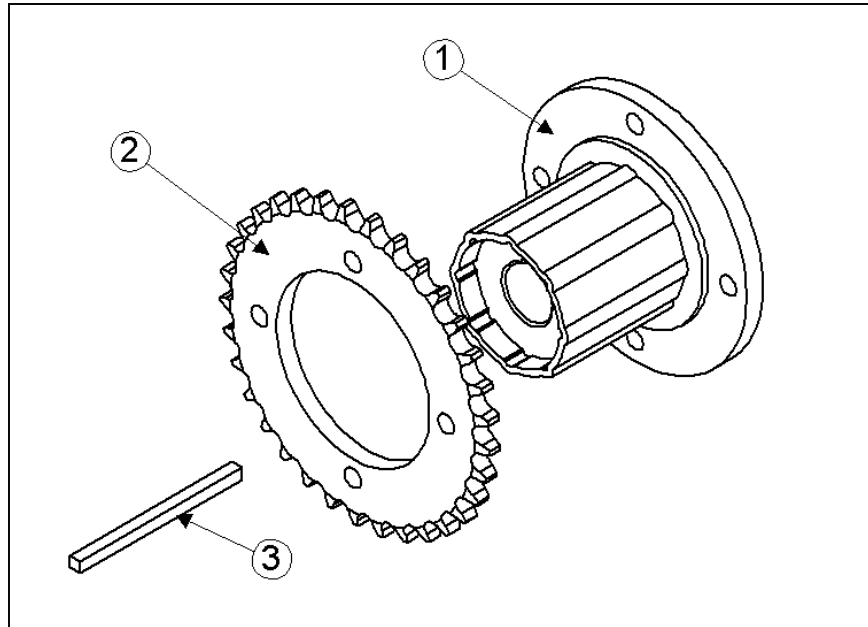


Model 2800 Hillco Leveling System  
For Serial Numbers 2800-1103 thru 2800-1127

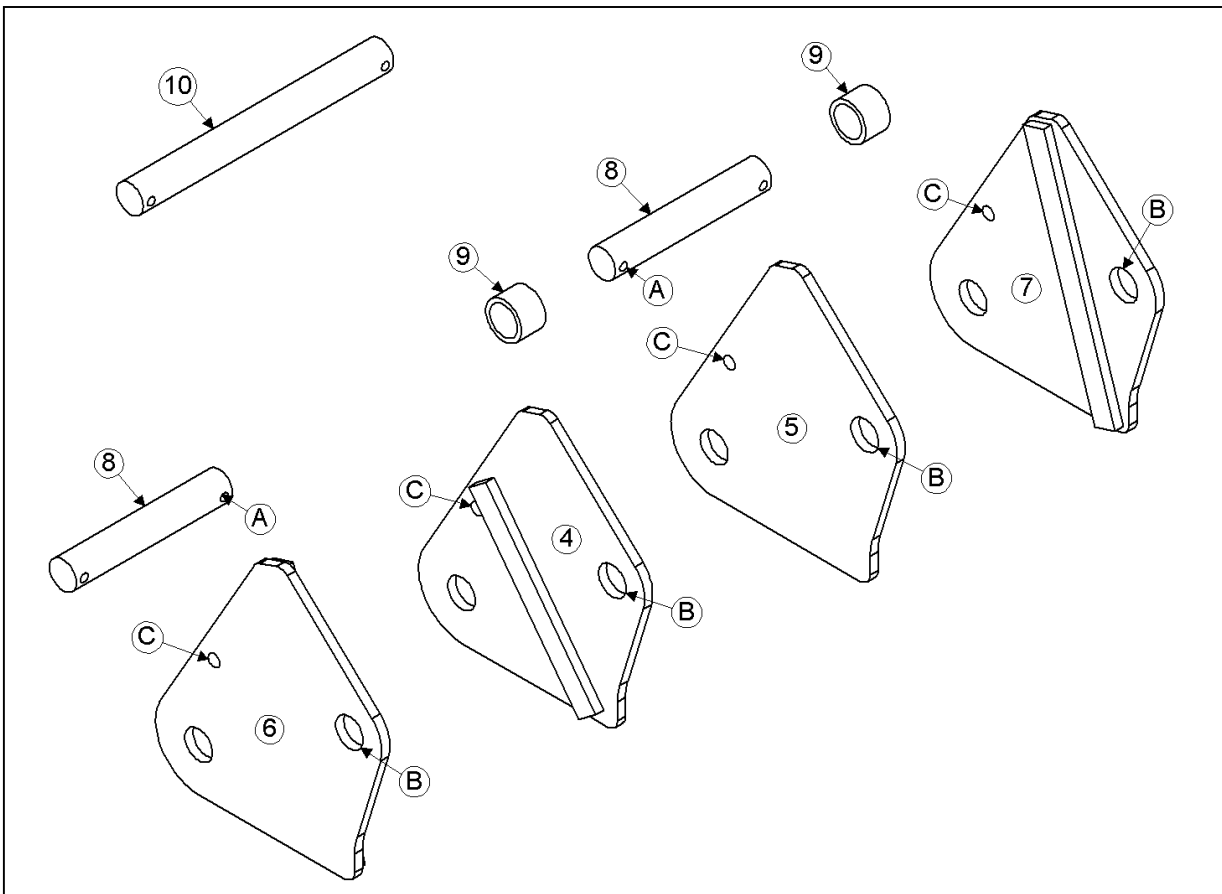
<b>TRANSITION</b>				
<b>REF.</b>	<b>PART NO.</b>	<b>QTY.</b>	<b>PART NAME</b>	<b>DESCRIPTION</b>
1	LA-227101	1	TA ADAPTER ASM	
2	LA-226852	1	TT THROAT ASM	
3	LA-225411	1	TA MOUNT ASM, ROD	
4	HC-100706	1	CYLINDER, SLAVE	SEE HYDRAULICS PAGE 8-1
NS	HC-134191	1	SEAL KIT, SLAVE CYLINDER	
5	LA-229071	2	TM PIN ASM, TRIM CYLINDER	
6	LP-218371	1	TT RING, WEAR	
7	LM-226831	1	TM BUSHING, PIVOT	
8	LM-226841	1	TM COLLAR, PIVOT	
9	LA-243711	2	ANGLE BACKING ASM 26-2800	
..	F-FHS-05F20	16	FHSC 5/16-24 X 1-1/4	
..	F-HNS-05F	16	HN 5/16-24 STOVER	
10	LM-213291	2	TA ARM, HEADER LOCK	
11	LM-225522	1	TT PLATE, WEAR BOTTOM	
12	LM-225531	1	TT PLATE, WEAR LH	
13	LM-225541	1	TT PLATE, WEAR RH	
<b>BEATER SHAFT</b>				
14	LM-221601	1	TB SHAFT	
15	LM-213201	2	TB PLATE, PADDLE BACKING	MIDWEST COMBINES ONLY
16	LP-104791	2	TB PADDLE (RUBBER)	MIDWEST COMBINES ONLY
17	LM-238091	2	TB PADDLE (METAL)	NORTHWEST COMBINES ONLY
18	LS-212701	1	TM KEY, BEATER DRIVE	
19	MC-100548	2	INSERT, BEARING, 1-7/16	
20	LA-243691	2	TM ASM, INNER FLANGETTE	
21	MC-101339	1	FLANGETTE, RND BEARING (PAIR)	
22	MC-135501	1	SPROCKET, 16T 80P	
23	MC-135511	1	HUB, SPLIT TAPER 1-7/16	
NS	LP-213242	1	TM CHAIN, 30 PIN #80	
NS	MC-101333	1	LINK, CONNECTING, 80P	
NS	MC-101332	1	LINK, HALF, 80P	
<b>TRANSITION THROAT JACK SHAFT</b>				
24	LM-234152	1	TT SHAFT, JACK	ALL COMBINES
NS	LM-221591	1	TT SHAFT, JACK	BEFORE JJCO268800
25	MC-100548	2	INSERT, BEARING, 1-7/16	
26	MC-101339	3	FLANGETTE, RND BEARING	
27	LA-245191	1	TM ASM, JS INNER FLANGETTE	
28	MC-136921	1	SLIP CLUTCH ASM, RADIAL PIN	
29	LM-226532	1	TM SPROCKET, RADIAL SLIP CLUTCH	SEE PAGE 2-3 FOR DETAIL
30	LM-244471	1	TM KEY, RADIAL SLIP CLUTCH	
31	MC-135491	1	SPROCKET, 11T, 80P	
32	MC-135511	1	HUB, SPLIT TAPER 1-7/16	
33	LS-212701	1	TM KEY, BEATER DRIVE	
NS	LP-213252	1	TM CHAIN, 62 PIN #60	
NS	MC-100240	1	LINK, HALF, 60P	
NS	MC-100239	1	LINK, CONNECTING, 60P	
<b>FEEDER HOUSE BEATER DRIVE</b>				
34	MC-100760	1	SPROCKET, QD, 60P, 15T	BEFORE SN JJCO193725
35	MC-100762	1	HUB, QD, 1-1/2B	BEFORE SN JJCO193725
36	LM-234221	1	TM KEY, FEEDER SHAFT	BEFORE SN JJCO193725
37	MC-101839	1	SPROCKET, POWER LOCK, 60P, 15T	SN JJCO193725 TO JJCO268799
38	MC-101838	1	HUB, POWER LOCK, 1-3/8B	SN JJCO193725-JJCO268799
39	LM-207011	1	TM SPACER, DRIVE SPROCKET	BEFORE SN JJCO268800
40	LA-234251	1	TM DRIVE ASM, TRANSITION	SN JJCO268800 AND AFTER
41	LA-243821	1	TM SHIELD, BEATER DRIVE	BEFORE SN JJCO268800
42	LM-243841	1	TM SKIRT, BEATER DRIVE SHIELD	BEFORE SN JJCO268800
NS	LM-243831	1	TM SKIRT, BEATER DRIVE SHIELD	SN JJCO268800 AND AFTER
NS	LM-243801	1	TM BRACKET, 60P IDLER	BEFORE SN JJCO268800
43	LM-243792	1	TM BRACKET, 60P IDLER	SN JJCO268800 AND AFTER
<b>TENSIONER</b>				
44	MC-100237	1	SPROCKET, IDLER, 60P, 15T, 5/8B	
45	MC-137441	1	SPROCKET, IDLER 80P, 12T, 3/4B	

# RADIAL PIN SLIP CLUTCH AND HEADER LIFT CYLINDER EXTENSIONS

## RADIAL PIN SLIP CLUTCH DETAIL



## HEADER LIFT CYLINDER EXTENSION DETAIL

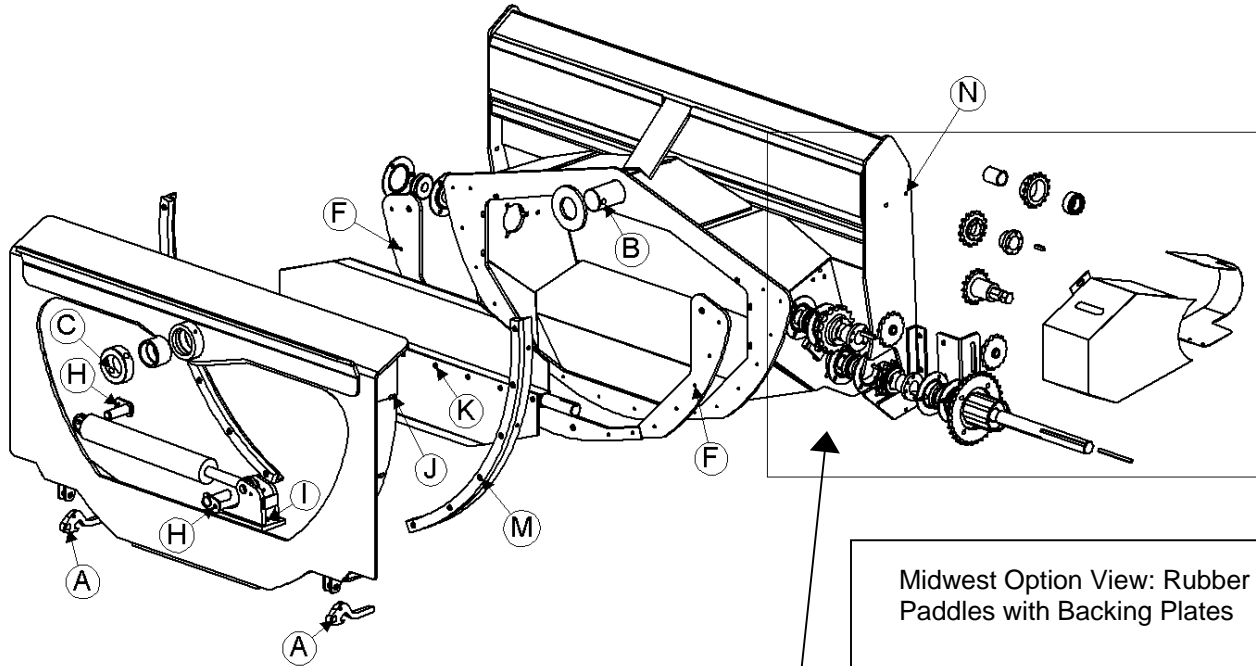




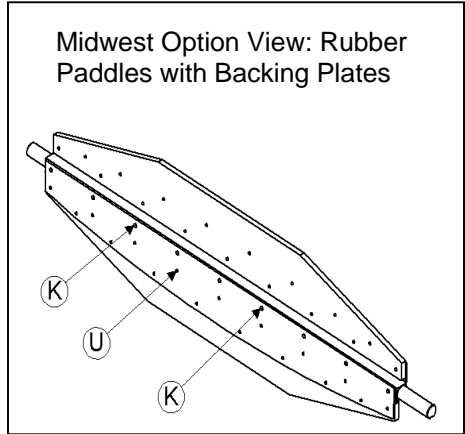
Model 2800 Hillco Leveling System  
For Serial Numbers 2800-1103 thru 2800-1127

<b>RADIAL PIN SLIP CLUTCH ASM</b>				
<b>REF.</b>	<b>PART NO.</b>	<b>QTY.</b>	<b>PART NAME</b>	<b>DESCRIPTION</b>
1	MC-136921	1	RADIAL PIN SLIP CLUTCH ASM 1-7/16B & 5/16 KEY	
2	LM-226532	1	TM SPROCKET, PLATE, 33T 60P	
3	LM-244471	1	TM KEY, RADIAL PIN SLIP CLUTCH	
NS	F-HC8-08F20	4	HC8 1/2-20 X 1-1/4	
NS	F-LW-08A	4	LW 1/2 HD	
NS	F-SSS-06C08	2	SCREW, SOCKET SET 3/8-16 X 1/2	
<b>HEADER LIFT CYLINDER EXTENSIONS</b>				
<b>60 IN. FEEDER HOUSE OPTION</b>				
<b>REF.</b>	<b>PART NO.</b>	<b>QTY.</b>	<b>PART NAME</b>	<b>DESCRIPTION</b>
4	LA-220631	↓	LM EXTENSION ASM, LIFT CYLINDER INNER LH	
4	..	1	WITH 2 HEADER LIFT CYLINDERS	
NS	..	2	WITH 3 HEADER LIFT CYLINDERS	
5	LA-220661	1	LM EXTENSION ASM, LIFT CYLINDER INNER RH	
6	LA-220641	1	LM EXTENSION ASM, LIFT CYLINDER OUTER LH	
7	LA-220651	1	LM EXTENSION ASM, LIFT CYLINDER OUTER RH	
8	LM-218501	2	LM PIN, HEADER LIFT CYLINDER ROD MOUNT	
9	LM-226961	2	LM SPACER, HEADER LIFT CYLINDER	
<b>54 IN. FEEDER HOUSE WITHOUT ROCK TRAP OPTION</b> <i>(DOES NOT INCLUDE MIDWEST UNITS)</i>				
<b>REF.</b>	<b>PART NO.</b>	<b>QTY.</b>	<b>PART NAME</b>	<b>DESCRIPTION</b>
6	LA-220641 OR LA-240111	2	LM EXTENSION ASM, LIFT CYLINDER OUTER LH	
7	LA-220651 OR LA-240121	↓	LM EXTENSION ASM, LIFT CYLINDER OUTER RH	
7	..	2	WITH 2 HEADER LIFT CYLINDERS	
NS	..	3	WITH 3 HEADER LIFT CYLINDERS	
8	LM-218501	2	LM PIN, HEADER LIFT CYLINDER ROD MOUNT	
9	LM-226961	↓	LM SPACER, HEADER LIFT CYLINDER	
9	..	2	WITH 2 HEADER LIFT CYLINDERS	
NS	..	4	WITH 3 HEADER LIFT CYLINDERS	
<b>54 IN. FEEDER HOUSE WITH ROCK TRAP AND THIRD HEADER LIFT CYLINDER</b>				
<b>REF.</b>	<b>PART NO.</b>	<b>QTY.</b>	<b>PART NAME</b>	<b>DESCRIPTION</b>
10	LM-235481	1	LM PIN, 3RD HEADER LIFT CYLINDER ROD MNT	
<b>54.5 IN. &amp; 60 IN. FEEDER HOUSE WITHOUT ROCK TRAP FASTENERS</b>				
<b>REF.</b>	<b>PART NO.</b>	<b>QTY.</b>	<b>PART NAME</b>	<b>WHERE USED</b>
A	F-PCT-05X48	4	COTTER PIN 5/16 x 3	
B	F-HC8-20C40	↓	HC8 1-1/4-7 X 2-1/2 ZINC PLT	
B	..	4	WITH 2 HEADER LIFT CYLINDERS	
NS	..	5	WITH 3 HEADER LIFT CYLINDERS	
B	F-HNS-20C	↓	HN8 1-1/4-7 STOVER PLT	
B	..	4	WITH 2 HEADER LIFT CYLINDERS	
NS	..	5	WITH 3 HEADER LIFT CYLINDERS	
C	F-HC5-08C104	↓	HC5 1/2-13 X 6-1/2	
C	..	2	WITH 2 HEADER LIFT CYLINDERS	
NS	..	1	WITH 3 HEADER LIFT CYLINDERS	
C	F-HNS-08C	2	HN 1/2-13, STOVER LOCK	
NS	F-HC5-08C176	↓	HC5 1/2-13 X 11	
NS	..	1	WITH 3 HEADER LIFT CYLINDERS	

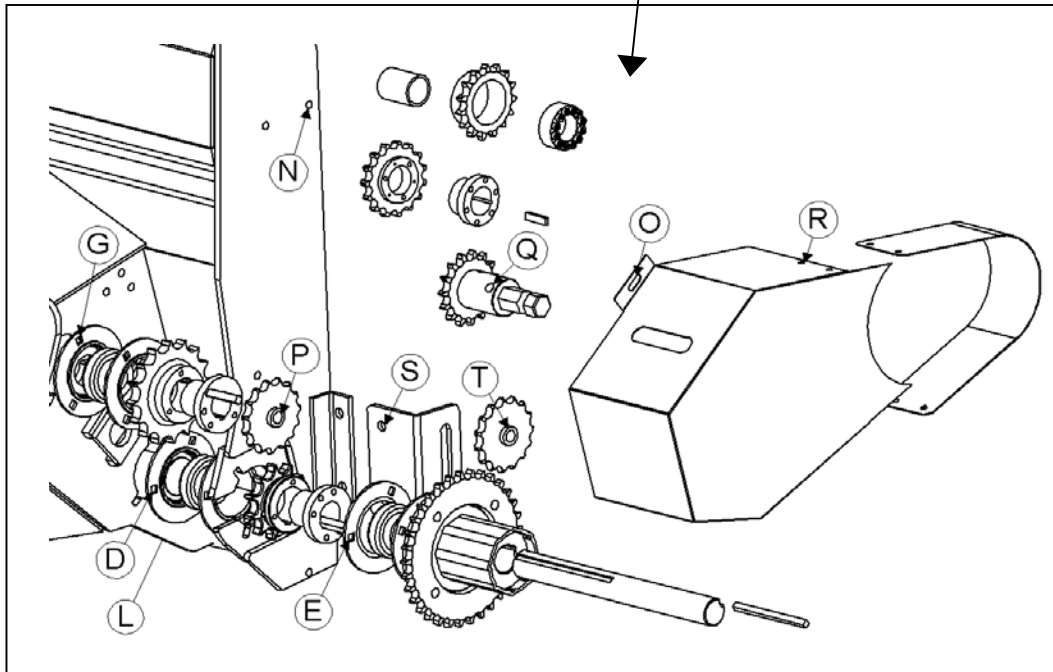
**TRANSITION FASTENERS**



\*Note: The fasteners with the reference number "L" attach to the bottom of the Transition for mounting purposes, however they cannot be seen in this view. The leader is pointing to the general area where the fasteners will be found.



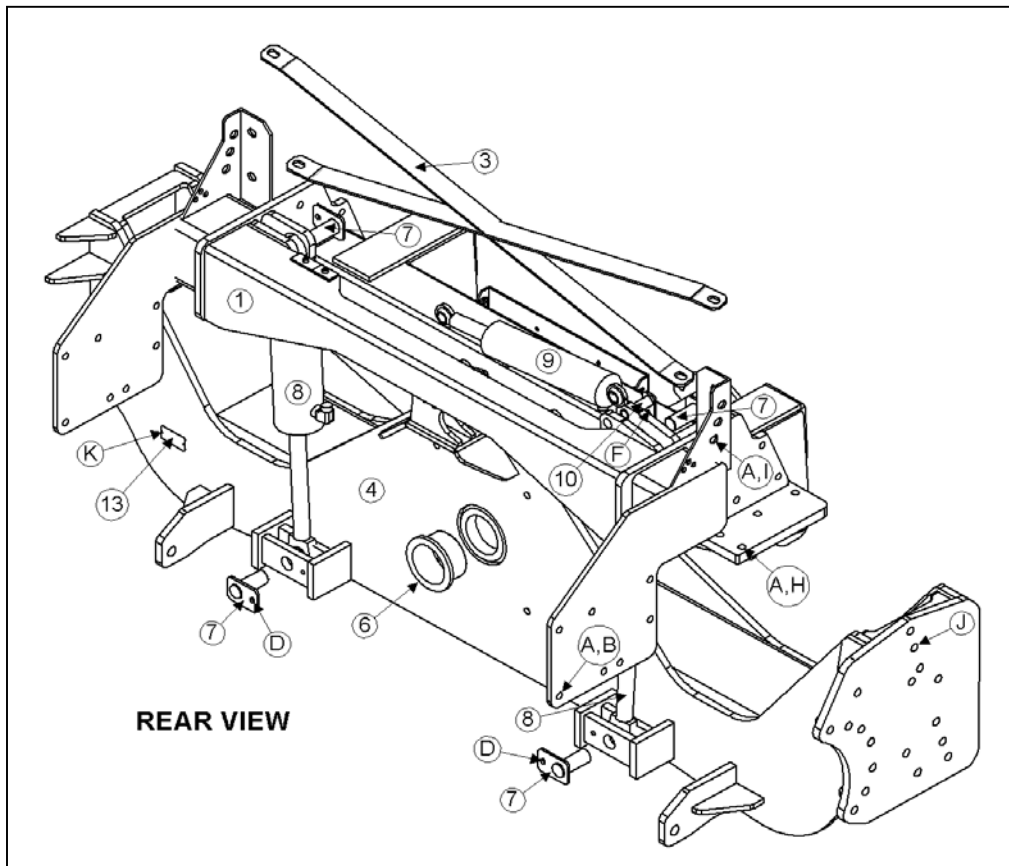
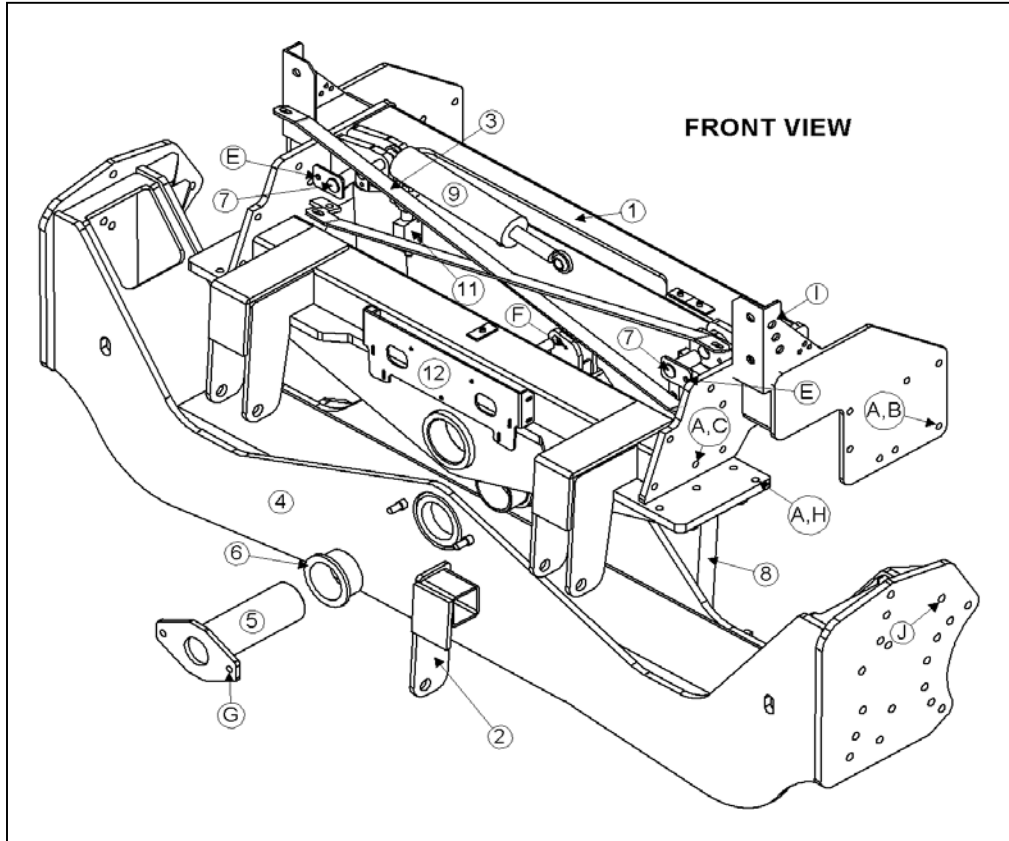
**Drive Component Fasteners Detail:**



Model 2800 Hillco Leveling System  
For Serial Numbers 2800-1103 thru 2800-1127

<b>TRANSITION FASTENERS</b>				
<b>REF.</b>	<b>PART NO.</b>	<b>QTY.</b>	<b>PART NAME</b>	<b>WHERE USED</b>
A	F-PCL-10X24	2	PIN, CLEVIS, 5/8 X 1-1/2 Plt	HEADER LOCK ARM
A	F-PCT-02X16	2	PIN, COTTER, 1/8 X 1	HEADER LOCK ARM
B	F-MB-14NR40	3	BUSHING, MACH 14 GA, NR, 2-1/2 ID	TT PIVOT PIN
C	F-HC8-10C80	1	HC8 5/8-11 X 5 Zinc Plt	TT PIVOT PIN COLLAR
C	F-HNS-10C	1	HN8 5/8-11, STOVER	TT PIVOT PIN COLLAR
D	F-CB-06C20	3	BOLT, CARRIAGE, 3/8-16 X 1-1/4	INNER JACKSHAFT BEARING
D	F-HN5-06C	3	HN5 3/8-16	INNER JACKSHAFT BEARING
D	F-LW-06	3	LW 3/8	INNER JACKSHAFT BEARING
E	F-CB-06C20	3	BOLT, CARRIAGE, 3/8-16 X 1-1/4	OUTER JACKSHAFT BEARING
E	F-HN5-06C	3	HN5 3/8-16	OUTER JACKSHAFT BEARING
E	F-LW-06	3	LW 3/8	OUTER JACKSHAFT BEARING
F	F-FHS-05F10	18	FHSC 5/16-24 X 5/8	UHMW WEAR PADS TO FACE PLATE
G	F-LW-06	6	LW 3/8	TT BEATER BRNG
G	F-CB-06C20	6	BOLT, CARRIAGE, 3/8-16 X 1-1/4	TT BEATER BRNG
G	F-HN5-06C	6	HN5 3/8-16	TT BEATER BRNG
H	F-HC5-06C12	2	HC5 3/8-16 X 3/4	SLAVE CYL MNT PIN
H	F-LW-06	2	LW 3/8	SLAVE CYL MNT PIN
I	F-HC8-10C32	3	HC8 5/8-11 X 2 Zinc Plt	ROD MNT
I	F-HNS-10C	3	HN8 5/8-11 STOVER	ROD MNT
J	F-HC5-06C20	8	HC5 3/8-16 X 1-1/4	BACKING ANGLE
J	F-HNS-06C	8	HN5 3/8-16 STOVER	BACKING ANGLE
J	F-FWH-06	8	FW 3/8 HD	BACKING ANGLE
K	F-HC8-08C44	9	HC8 1/2 -13 X 2-3/4 ZINC PLT	BEATER BACKING PLT MNT OR STEEL PADDLES
K	F-HNSF-08C	9	HN8 1/2-13, STOVER FLNG	BEATER BACKING PLT MNT OR STEEL PADDLES
L	F-HC5-08C32	2	HC5 1/2-13 X 2	TRANSITION MNT
L	F-HN5-08C	2	HN5 1/2-13	TRANSITION MNT
L	F-LW-08	2	LW 1/2	TRANSITION MNT
M	F-FHS-05F20	16	FHSC 5/16-24 X 1-1/4	UHMW BACKING WEAR PAD
M	F-HNS-05F	16	HN 5/16-24, STOVER	UHMW BACKING WEAR PAD
N	F-THM-06C16	2	THMS 3/8-16 X 1	HEADER HYDRAULIC COUPLER MOUNT
N	F-HNF-06C	2	HN 3/8-16, FLNG SERR	HEADER HYDRAULIC COUPLER MOUNT
O	F-THMS-05C16	2	THMS 5/16-18 X 1, SLT SERR	BEATER DRIVE SHIELD
O	F-HNF-05C	2	HN 5/16-18, FLNG SERR	BEATER DRIVE SHIELD
P	F-HNN-12C	1	HN 3/4-10 NYLOCK	80P IDLER SPROCKET
P	F-FWH-12	5	FW 3/4 HD	80P IDLER SPROCKET
P	F-MB-12WR18	2	BUSHING, MACH 18 GA, WR, 3/4 ID	80P IDLER SPROCKET
P	LM-248981	1	TM BOLT, 80P IDLER SPROCKET	80P IDLER SPROCKET
<b>SN JJCO268800 &amp; AFTER</b>				
<b>(THESE ARE ALL COMBINES WITH HYDRAULIC HEADER REVERSER)</b>				
Q	F-SSS-06C08	2	SET SCREW, SOCKET 3/8-16 X 1/2, GRADE 8	<i>USE #242 LOCTITE WITH THESE FASTENERS</i>
<b>SN JJCO117059 &amp; AFTER</b>				
R	F-THMS-04C08	4	THMS 1/4-20 X 1/2, SLT SERR	BEATER DRIVE SHIELD
R	F-HNF-04C	4	HN 1/4-20, FLNG SERR	BEATER DRIVE SHIELD
S	F-HC5-08C20	2	HC5 1/2-13 X 1-1/4	60P IDLER SPROCKET BRACKET
S	F-LW-08	2	LW 1/2	60P IDLER SPROCKET BRACKET
S	F-HN5-08C	2	HN5 1/2-13	60P IDLER SPROCKET BRACKET
T	F-CB-10C40	1	BOLT, CARRIAGE GR 5 5/8-11 X 2-1/2	60P IDLER SPROCKET
T	F-HNN-10C	1	HN 5/8-11 NYLOCK	60P IDLER SPROCKET
T	F-FWH-10	10	FW 5/8 HD	60P IDLER SPROCKET
T	F-FWH-12	1	FW 3/4 HD	60P IDLER SPROCKET
<b>FOR MIDWEST COMBINES</b>				
U	F-EB-04C20	34	BOLT, ELEVATOR, 1/4-20 X 1-1/4 ZINC PLT	BEATER PADDLES
U	F-HNF-04C	34	SERR. FLHN 1/4-20 ZINC PLT	BEATER PADDLES

### 3 CARRIAGE

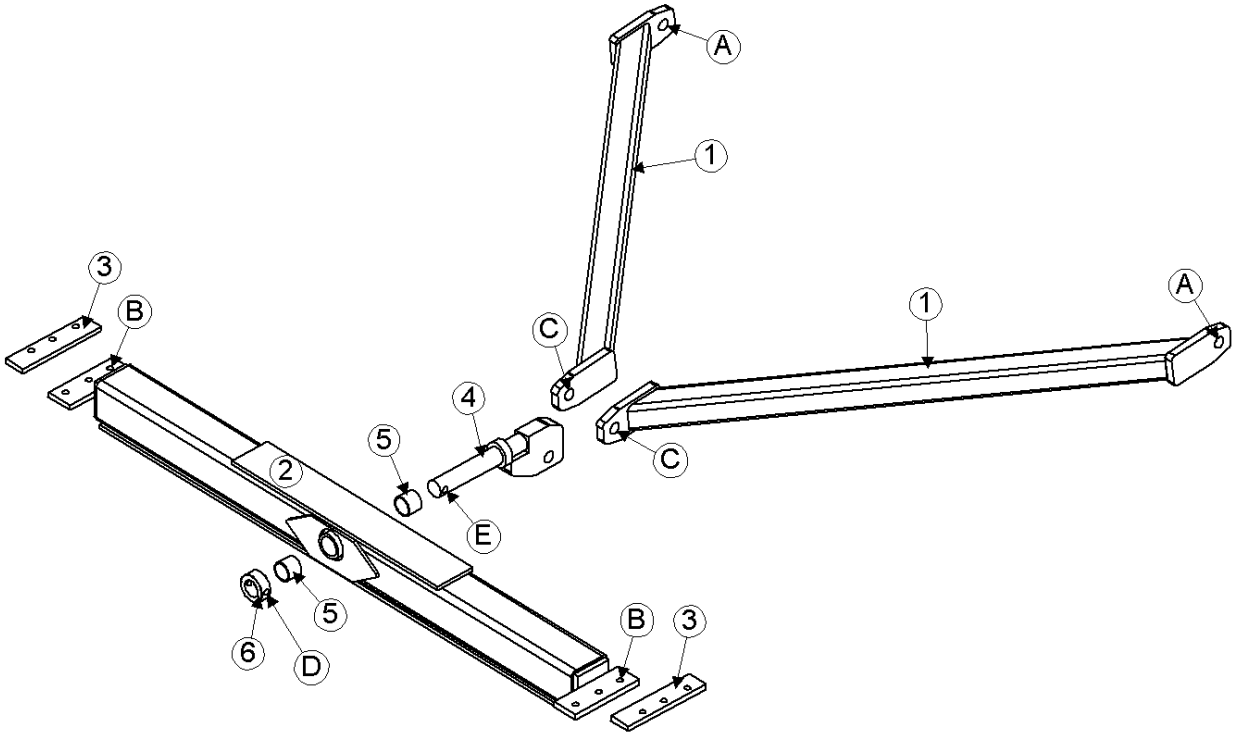


Model 2800 Hillco Leveling System  
For Serial Numbers 2800-1103 thru 2800-1127

<b>CARRIAGE</b>				
<b>REF.</b>	<b>PART NO.</b>	<b>QTY.</b>	<b>PART NAME</b>	<b>DESCRIPTION</b>
1	LA-227243	1	CO ASM, TWO CYLINDER	
NS	LA-227253	1	CO ASM, THREE CYLINDER	
2	LM-235481	1	CO ASM, 3RD HEADER LIFT	FOR COMBINES WITH 3RD HEADER LIFT CYLINDER
3	LM-226631	2	CO STRAP, X BRACE	
4	LA-227263	1	CU UNDERCARRIAGE ASM	
5	LA-217691	1	CM PIN ASM, MAIN PIVOT	
6	LP-103871	2	CO BUSHING, PIVOT	
7	LA-230551	4	CM PIN ASM, MAIN CYLINDER	
8	HC-103227	2	CYLINDER, MAIN	SEE HYDRAULIC PAGE 8-1
9	HC-101842	1	CYLINDER, MASTER	SEE HYDRAULIC PAGE 8-1
10	LA-229071	2	TM PIN ASM, TRIM CYLINDER	
11	HC-138901	2	VALVE, COUNTERBALANCE	SEE HYDRAULIC PAGE 8-1
12	LP-249181	1	EM PLATE ELECTRICAL MOUNT	
13	LA-255941	1	TAG, SERIAL NUMBER	
<b>OPTIONAL CARRIAGE COMPONENTS</b>				
NS	MC-137251	?	COLLAR, 2 PIECE CLAMPING	QTY AS NEEDED
NS	MC-137501	?	WASHER, QUICK REPAIR 2"	QTY AS NEEDED
<b>CARRIAGE FASTENERS</b>				
<b>REF.</b>	<b>PART NO.</b>	<b>QTY.</b>	<b>PART NAME</b>	<b>WHERE USED</b>
A	F-HNS-10C	34	HN8 5/8-11 STOVER LOCK	OVERCARRIAGE
A	F-FWH-10	44	FW HD 5/8	OVERCARRIAGE
B	F-HC8-10C24	14	HC8 5/8-11 x 1-1/2	OVERCARRIAGE REAR SIDE PLT
C	F-HC8-10C32	12	HC8 5/8-11 x 2	OVERCARRIAGE FRONT SIDE PLT
D	F-HC5-08C16	2	HC5 1/2-13 X 1	LOWER MAIN CYL MNT PIN
D	F-LW-08	2	LW 1/2	LOWER MAIN CYL MNT PIN
E	F-HC5-08C16	2	HC5 1/2-13 X 1	TOP MAIN CYL MNT PIN
E	F-LW-08	2	LW 1/2	TOP MAIN CYL MNT PIN
F	F-HC5-06C14	2	HC5 3/8-16 X 7/8	MASTER CYL MNT PIN
F	F-LW-06	2	LW 3/8	MASTER CYL MNT PIN
G	F-HC8-10C36	2	HC8 5/8-11 X 2-1/4	MAIN PVT PIN
G	F-HNS-10C	2	HN8 5/8-11, STOVER	MAIN PVT PIN
G	F-FW-10	2	FW 5/8	MAIN PVT PIN
H	F-HC8-10C36	8	HC8 5/8-11 x 2-1/4	OVERCARRIAGE BASE PLT
I	F-HC8-10C32	10	HC8 5/8-11 x 2	OVERCARRIAGE UPPER FRAME SUPPORTS
J	F-SHC-20M065E	6	SHCS 10.9-20 X 2.5 X 65	FINAL DRIVE MOUNTING
J	F-HC-20M065E	22	HC 10.9-20 X 2.5 X 65	FINAL DRIVE MOUNTING
J	F-LWH-20M	28	LW 20 HD	FINAL DRIVE MOUNTING
K	F-UDS-#7X06	2	SCREW, U-DRIVE # 7 x 3/8	SERIAL NUMBER PLT

Model 2800 Hillco Leveling System  
For Serial Numbers 2800-1103 thru 2800-1127

### 4 Y-BRACE

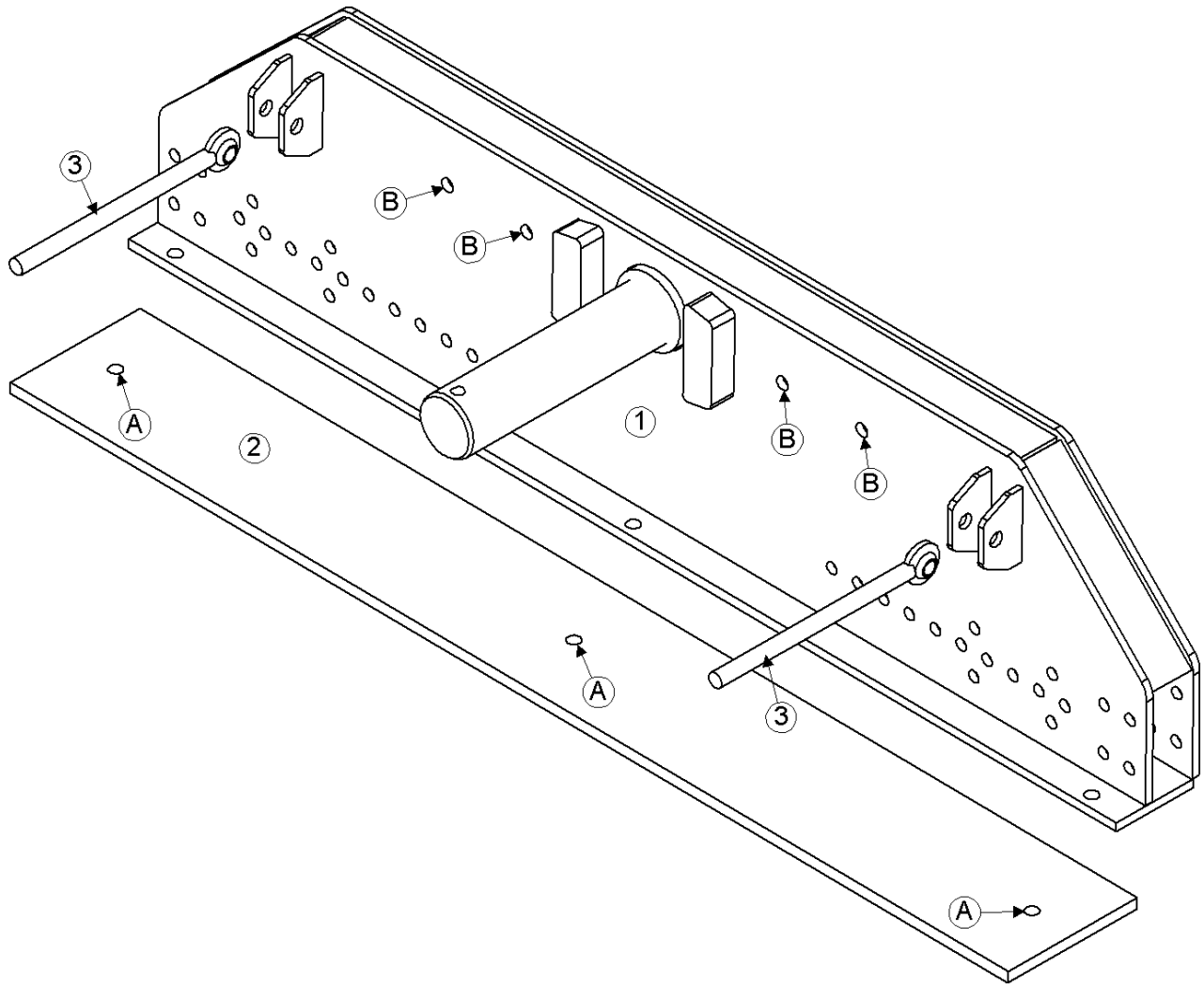


Model 2800 Hillco Leveling System  
For Serial Numbers 2800-1103 thru 2800-1127

<b>Y-BRACE</b>				
<b>REF.</b>	<b>PART NO.</b>	<b>QTY.</b>	<b>PART NAME</b>	<b>DESCRIPTION</b>
1	LA-226991	2	YB ARM ASM	
2	LA-226101	1	YB CROSS SUPPORT ASM	
3	LM-226061	2	YB CLAMP, CROSS SUPPORT	
4	LA-228761	1	YB PIN ASM, PIVOT	
5	LM-245431	2	YB BUSHING, PLANE	
6	LM-234101	1	YB COLLAR, PIVOT PIN	
<b>Y-BRACE FASTENERS</b>				
<b>REF.</b>	<b>PART NO.</b>	<b>QTY.</b>	<b>PART NAME</b>	<b>WHERE USED</b>
A	F-HC8-16C44	2	HC8 1-8 x 2-3/4	Y-BRACE FRNT MNT
A	F-HNS-16C	2	HN8 1-8, STOVER	Y-BRACE FRNT MNT
B	F-HC8-08C36	6	HC8 1/2-13 x 2-1/4	Y-BRACE FRAME MNT
B	F-HNS-08C	6	HN8 1/2-13, STOVER	Y-BRACE FRAME MNT
C	F-HC8-16C72	1	HC8 1-8 x 4-1/2	Y-BRACE REAR MNT
C	F-HNS-16C	1	HN8 1-8, STOVER	Y-BRACE REAR MNT
D	F-HC8-08C48	1	HC8 1/2-13 x 3	Y-BRACE PVT PIN
D	F-HNS-08C	1	HN8 1/2-13, STOVER	Y-BRACE PVT PIN
E	F-MB-18NR24	20	BUSHING, MACH 18 GA NR 1-1/2 ID	Y-BRACE PVT PIN

Model 2800 Hillco Leveling System  
For Serial Numbers 2800-1103 thru 2800-1127

### 5 DROP AXLE

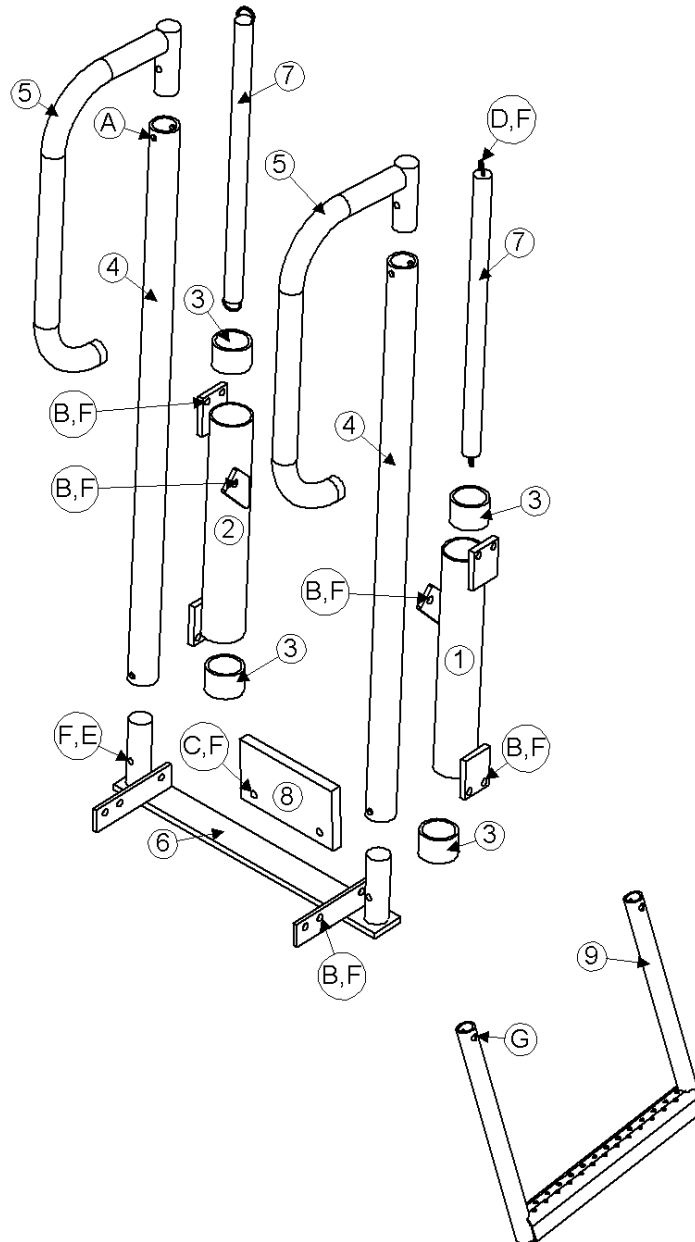




Model 2800 Hillco Leveling System  
For Serial Numbers 2800-1103 thru 2800-1127

<b>DROP AXLE</b>				
<b>REF.</b>	<b>PART NO.</b>	<b>QTY.</b>	<b>PART NAME</b>	<b>DESCRIPTION</b>
1	LA-226901	1	DA ASM	
2	LM-212561	1-10	DA WEIGHT, 160 LB.	1600 LB. MAX
3	MC-133711	2	LINK, BALL JOINT DRAG	
<b>DROP AXLE FASTENERS</b>				
<b>REF.</b>	<b>PART NO.</b>	<b>QTY.</b>	<b>PART NAME</b>	<b>WHERE USED</b>
NS	F-HC8-12C96	4	HC8 3/4-10 x 6	STEERING CYL MNT
A	F-HC8-12C56	3	HC8 3/4-10 x 3-1/2	1 WEIGHT BOLT PACKAGE
A	F-HC8-12C56	3	HC8 3/4-10 x 3-1/2	2 WEIGHT BOLT PACKAGE
A	F-HC8-12C72	3	HC8 3/4-10 x 4-1/2	3 WEIGHT BOLT PACKAGE
A	F-HC8-12C88	3	HC8 3/4-10 x 5-1/2	4 WEIGHT BOLT PACKAGE
A	F-HC8-12C96	3	HC8 3/4-10 x 6	5 WEIGHT BOLT PACKAGE
A	F-HC8-12C112	3	HC8 3/4-10 x 7	6 WEIGHT BOLT PACKAGE
A	F-HC8-12C120	3	HC8 3/4-10 x 7-1/2	7 WEIGHT BOLT PACKAGE
A	F-HC8-12C136	3	HC8 3/4-10 x 8-1/2	8 WEIGHT BOLT PACKAGE
A	F-HC8-12C144	3	HC8 3/4-10 x 9	9 WEIGHT BOLT PACKAGE
A	F-HC8-12C160	3	HC8 3/4-10 x 10	10 WEIGHT BOLT PACKAGE
A	F-HN8-12C	3	HN8 3/4-10	ALL WEIGHT BOLT PACKAGE
A	F-LW-12A	3	LW 3/4 HD	ALL WEIGHT BOLT PACKAGE
A	F-FWH-12	3	FW 3/4 HD	ALL WEIGHT BOLT PACKAGE
<b>COMBINES WITH 4WD</b>				
B	F-HC5-12C88	4	OPTIONAL HC5 3/4-10 X 5-1/2	4WD ASM MOUNT
B	F-FW-12	4	OPTIONAL FW 3/4	4WD ASM MOUNT
B	F-HNF-12C	4	OPTIONAL HN 3/4-10, FLNG., SERR.	4WD ASM MOUNT
NS	F-HC8-12C96	6	HC8 3/4-10 x 6	STEERING CYL MNT

### 6 LADDER

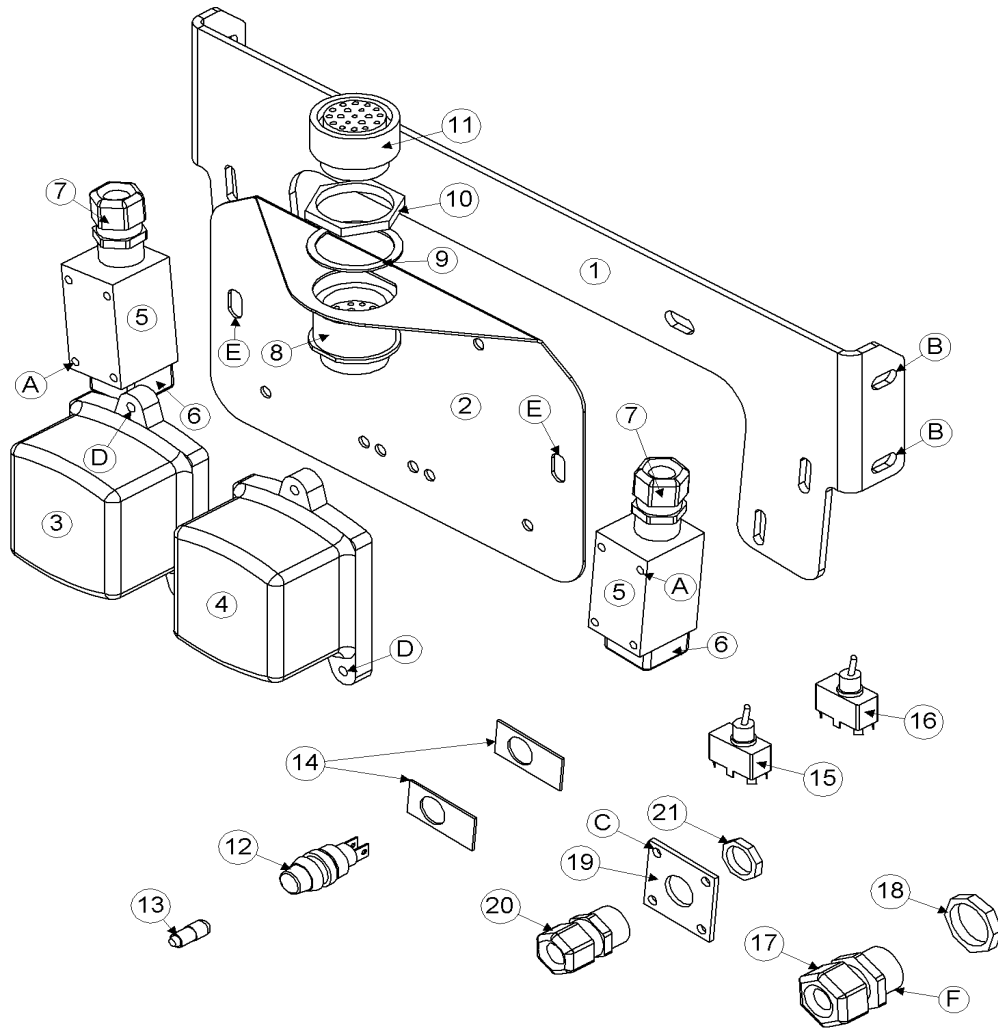


Model 2800 Hillco Leveling System  
For Serial Numbers 2800-1103 thru 2800-1127

<b>LADDER COMPONENTS</b>				
<b>REF.</b>	<b>PART NO.</b>	<b>QTY.</b>	<b>PART NAME</b>	<b>DESCRIPTION</b>
1	LA-214931	1	LM BUSHING ASM, SLIDE TUBE LH	
2	LA-219511	1	LM BUSHING ASM, SLIDE TUBE RH	
3	LM-214941	4	LM BUSHING, SLIDE	
4	LM-214951	2	LM TUBE, SLIDE	
5	LA-227001	2	LM HANDLE ASM, LADDER	
6	LA-226971	1	LM STEP ASM, SLIDE 21-2300	
7	MC-100710	2	SPRING, EXTENSION, ZINC PLATED	
8	LP-117921	1	LM BUMPER, STEP	
9	LA-238131	1	LM STEP ASM, REAR SERVICE LADDER	
<b>LADDER FASTENERS</b>				
<b>REF.</b>	<b>PART NO.</b>	<b>QTY.</b>	<b>PART NAME</b>	<b>WHERE USED</b>
A	F-PR-06X40	2	PIN, ROLL, 3/8 x 2-1/2	SECURES HANDLE ASM TO SLIDE TUBE
B	F-THMS-06C16	16	THMS 3/8-16 x 1, SLT, SERR	SECURES SLIDE BUSH TUBE ASM TO LADDER CHANNEL, HAND RAIL & BOTTOM STEP
C	F-PHMS-06C24	2	PHMS 3/8-16 X 1-1/2, SLT	BUMPER MNT
C	F-FW-06	2	FW 3/8	BUMPER MNT
D	F-PHMS-06C40	2	PHMS 3/8-16 x 2-1/2, SLT	TOP SPRING MNT
E	F-PHMS-06C56	2	PHMS 3/8-16 x 3-1/2, SLT	BOTTOM SPRING MNT AND SECURES SLIDE TUBE TO STEP ARM
F	F-HNF-06C	30	HN 3/8-16, FLNG, SERR	SECURES TUBE ASM TO LADDER CHNL., SPRING MNTS, HAND RAIL & BTM STEP
G	F-PHMS-06C32	2	PHMS 3/8-16 X 2, SLT.	RIGHT REAR SERVICE LADDER EXT STEP
G	F-HNF-06C	2	HN 3/8-16, FLNG, SERR	RIGHT REAR SERVICE LADDER EXT STEP
NS	LM-230811	2	CHAIN, 2/0 STR. LINK, PLATED - 1 LINK	BOTTOM SPRING MNT
NS	LM-230821	2	CHAIN, 2/0 STR. LINK, PLATED - 5 LINKS	TOP SPRING MNT

Model 2800 Hillco Leveling System  
For Serial Numbers 2800-1103 thru 2800-1127

**7 ELECTRICAL BOX**

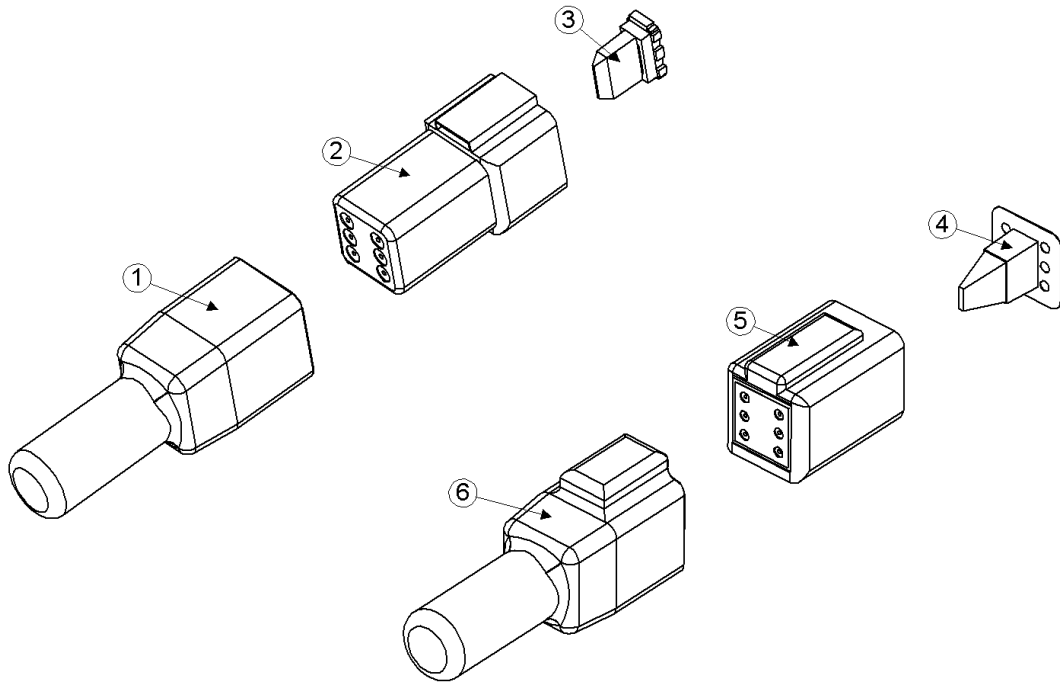


ELECTRICAL FASTENERS				
REF.	PART NO.	QTY.	PART NAME	WHERE USED
A	F-PHM-#10C28	4	PHMS 10-24 X 1-3/4	LIMIT SWITCH MNT
A	F-HNF-#10C	4	HN 10-24, FLNG SERR	LIMIT SWITCH MNT
B	F-HC5-05C12	4	HC5 5/16-18 X 3/4	EM PLATE ELECTRICAL MOUNT
B	F-HNF-05C	4	FLHN 5/16-18	EM PLATE ELECTRICAL MOUNT
C	F-THC-#10C08	4	TC HWH 10-24 X 1/2	STRAIN RELIEF MOUNT
D	F-THMS-04C12	6	THMS 1/4-20 X 3/4, SLT SERR	CONTROLLER MOUNT
D	F-HNF-04C	6	HN 1/4-20, FLNG SERR	CONTROLLER MOUNT
E	F-LWE-06	1	LW 3/8, EXTERNAL STAR	CONTROLLER MOUNTING PLATE
E	F-THMS-06C16	2	THMS 3/8-16 X 1, SLT SERR	CONTROLLER MOUNTING PLATE
E	F-HNF-06C	2	HN 3/8-16, FLNG SERR	CONTROLLER MOUNTING PLATE
F	F-MB-18NR18	2	BUSHING, MACH 18 GA, NR, 1-1/8 ID	STRAIN RELIEF ON SIDE OF CAB
NS	F-THMS-04C08	1	THMS 1/4-20 X 1/2, SLT SERR	GROUND
NS	F-HNF-04C	1	HN 1/4-20, FLNG SERR	GROUND

Model 2800 Hillco Leveling System  
For Serial Numbers 2800-1103 thru 2800-1127

<b>ELECTRICAL</b>				
<b>REF.</b>	<b>PART NO.</b>	<b>QTY.</b>	<b>PART NAME</b>	<b>DESCRIPTION</b>
<b>FOR ALL COMBINES</b>				
ASM	LA-249111	1	EM ASM, CONTROLLER	
1	LP-249121	1	EM PLATE, MAIN CONTROL	
2	LP-249181	1	EM PLATE, ELECTRICAL MOUNT	
3	EC-100002	1	LEVELING CONTROLLER, LOW SPEED	
4	EC-100003	1	LEVELING CONTROLLER, HIGH SPEED	
5	EC-100557	2	BODY, LIMIT SWITCH	
6	EC-100692	2	HEAD, LIMIT SWITCH STRAIGHT PLUNGER	
7	EC-138781	2	STRAIN RELIEF, NYLON, BLK, 1/2 NPT	
8	EC-138751	1	DEUTSCH, RECEPTACLE	
9	EC-138771	1	DEUTSCH, PANEL LOCK WASHER	
10	EC-138761	1	DEUTSCH, PANEL NUT	
11	EC-138741	1	DEUTSCH PLUG	
12	EC-101876	1	LAMP, INDICATOR	IN CAB CONSOLE
13	EC-101877	1	BULB, INDICATOR LAMP	IN CAB CONSOLE
14	LM-219501	2	EM MOUNT, OUT OF LEVEL LAMP	IN CAB CONSOLE
NS	LL20-101869	1	PLATE, MAXIMUM LEVEL	IN CAB CONSOLE
15	EC-101874	1	SWITCH, TOGGLE, DP ON-OFF-ON, 3-POS.	AUTO/OFF/MANUAL SWITCH
16	EC-138731	1	SWITCH, TOGGLE, DP MO-OFF-MO, 3-POS.	LEFT/RIGHT LEVELING SWITCH
NS	LL20-101868	1	PLATE, CONSOLE SWITCH	IN CAB CONSOLE
17	EC-141891	1	STRAIN RELIEF, NYLON, BLK	
18	EC-141901	1	STRAIN RELIEF NUT, NYLON, BLK	
<b>FOR COMBINES WITH FIELD TRACKER</b>				
NS	LA-236731	1	AUTO CENTER DISABLE RELAY KIT	
<b>FOR COMBINES WITH FIELD TRACKER ELECTRONICS, BUT NO VALVE</b>				
NS	EC-138781	1	STRAIN RELIEF, NYLON, BLK, 1/2 NPT	MOUNTED TO TRIM VALVE
NS	LA-236731	1	AUTO CENTER DISABLE RELAY KIT	
<b>FOR COMBINES WITHOUT FIELD TRACKER</b>				
19	LM-207631	1	LM MOUNT, CAB STRAIN RELIEF	
20	EC-138781	1	STRAIN RELIEF, NYLON, BLK, 1/2 NPT	RIGHT SIDE OF CAB
21	EC-142121	1	STRAIN RELIEF NUT, 1/2" NYLON, BLK	RIGHT SIDE OF CAB
NS	EC-138781	1	STRAIN RELIEF, NYLON, BLK, 1/2 NPT	MOUNTED ON TRIM VALVE
ASM	LA-235472	1	LATERAL TILT RELAY KIT	
NS	..	1	EC-100009 - BASE, RELAY, AUTOMOTIVE	
NS	..	1	EC-100010 - RELAY, AUTOMOTIVE	

## CONNECTORS



Model 2800 Hillco Leveling System  
For Serial Numbers 2800-1103 thru 2800-1127

<b>ELECTRICAL CONNECTORS</b>			
REF.	PART NO.	QTY.	PART NAME
<b>FOR ALL COMBINES</b>			
NS	EC-100164	20	PIN, ELECTRICAL
NS	EC-100165	20	SOCKET, SIZE 16 DEUTSCH
1	EC-100549	1	BOOT, 6 PIN
2	EC-100554	1	RECEPTACLE, 6 PIN
3	EC-100551	1	WEDGE, 6 PIN
NS	EC-100628	8	PLUG, SEALING, 18 GAUGE
NS	EC-100693	2	NUT, DRESS, 13/32-32
NS	ET-QC-20	1	QUICK-CONNECT, BLUE
NS	ET-SP-20	2	TERMINAL, FEMALE SPADE, NON-INSUL, 20 GA
NS	ET-ST-20#6	18	TERMINAL, RING, #6, 20 GA., NON-INSULATED
NS	ET-ST-2004	3	TERMINAL, RING, NON-INS, 1/4, 20 GA
<b>FOR FACTORY AND DEALER INSTALL WITH FIELD TRACKER ONLY</b>			
ASM	LA-236731	1	AUTO CENTER DISABLE RELAY KIT
NS	..	4	EC-139301 - SPADE, FIFO FEMALE .187
NS	..	1	EC-139311 - SPADE, FIFO FEMALE .250
NS	..	1	EC-139321 - SPADE, MALE .187 NON-INSUL (14-16)
NS	..	1	EC-139331 - RELAY, BOSCH
NS	..	1	ET-ST-20#10 - TERMINAL, RING, #10, 20 GA.
<b>FOR FACTORY INSTALL ONLY</b>			
ASM	LA-239402	1	FACTORY INSTAL MANIFOLD WIRING KIT
NS	..	3	EC-100165 - SOCKET, SIZE 16 DEUTSCH
4	..	1	EC-100552 - WEDGE, 6 SOCKET
5	..	1	EC-100553 - PLUG, 6 SOCKET
NS	..	3	EC-100628 - PLUG, SEALING, 18 GAUGE
NS	..	3	ET-ST-2008 - TERMINAL, RING, 1/2, 20 GA
<b>FOR DEALER INSTALL WITHOUT FIELD TRACKER ONLY</b>			
ASM	LA-235472	1	LATERAL TILT RELAY KIT
NS	..	8	EC-100008 - TERMINAL, RELAY, AUTOMOTIVE
NS	..	2	EC-100009 - BASE, RELAY, AUTOMOTIVE
NS	..	2	EC-100010 - RELAY, AUTOMOTIVE
NS	..	2	EC-100164 - PIN, ELECTRICAL
NS	..	7	EC-100165 - SOCKET, SIZE 16 DEUTSCH
4	..	1	EC-100552 - WEDGE, 6 SOCKET
5	..	1	EC-100553 - PLUG, 6 SOCKET
6	..	1	EC-100550 - BOOT, 6 SOCKET
NS	..	1	EC-100628 - PLUG, SEALING, 18 GAUGE
NS	..	1	ET-ST-20#10 - TERMINAL, RING, #10, 20 GA
NS	..	1	ET-ST-20#6 - TERMINAL, RING, #6, 20 GA
<b>FOR DEALER INSTALL WITH FIELD TRACKER ONLY</b>			
NS	EC-100165	3	SOCKET, SIZE 16 DEUTSCH
4	EC-100552	1	WEDGE, 6 SOCKET
5	EC-100553	1	PLUG, 6 SOCKET
6	EC-100550	1	BOOT, 6 SOCKET
NS	EC-100628	3	PLUG, SEALING, 18 GAUGE

**ELECTRICAL CABLES**



**#1 LA-249101**  
EM CABLE ASM, CONTROLLERS  
TO VALVE



**#2 LA-249091**  
EM CABLE ASM, CAB  
TO CONTROLLERS



**#3 LA-249081**  
EM CABLE ASM, LEVELING & TRIM



**#4 LA-249071**  
EM CABLE ASM, SWITCH  
TO VALVE



**#5 LA-249061**  
EM CABLE ASM, LEVELING



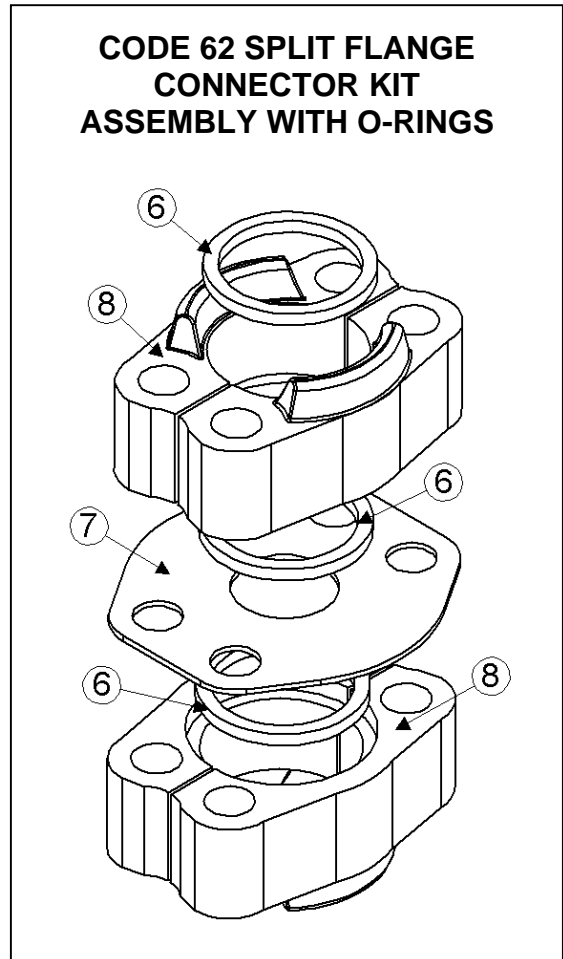
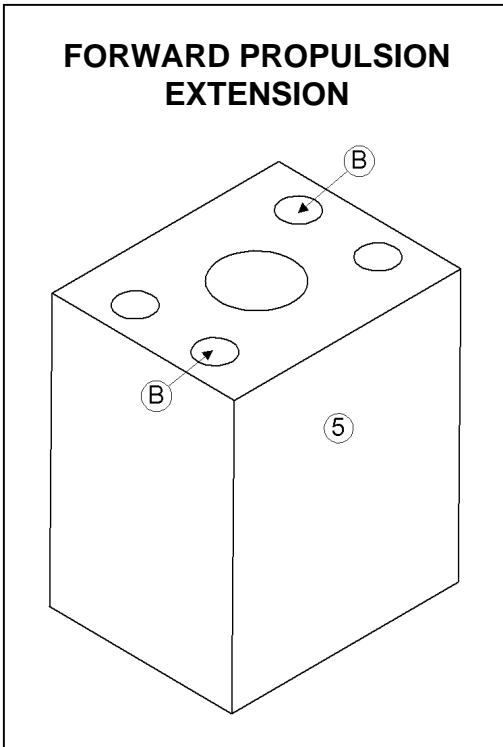
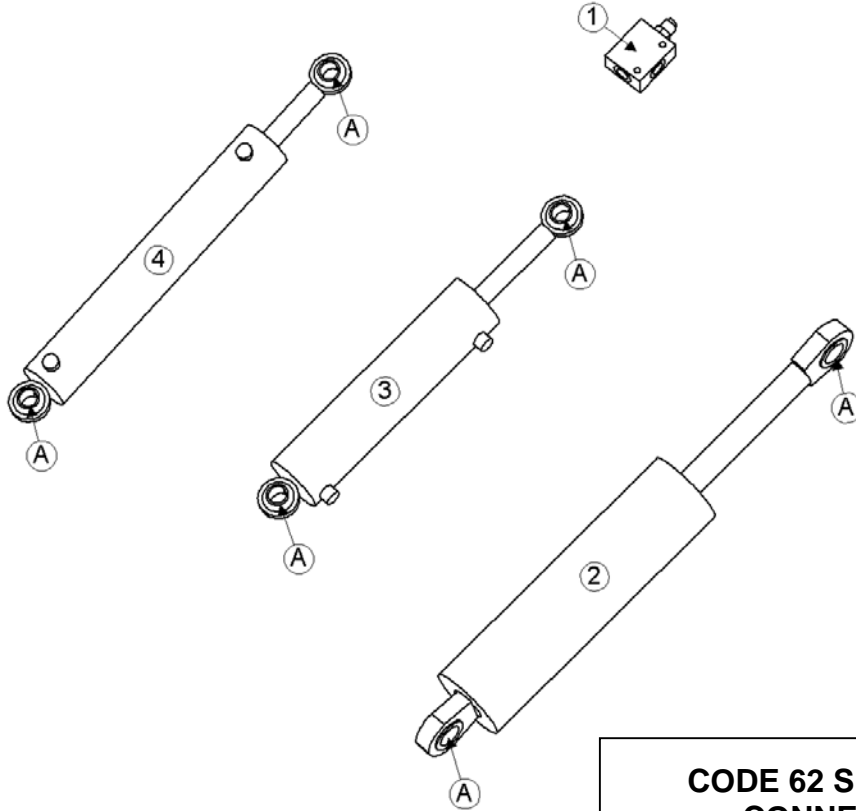
**#6 LA-249051**  
EM CABLE ASM, FIELD TRACKER JUMPER



Model 2800 Hillco Leveling System  
 For Serial Numbers 2800-1103 thru 2800-1127

<b>CABLE ASSEMBLIES</b>			
<b>REF.</b>	<b>PART NO.</b>	<b>QTY.</b>	<b>PART NAME AND DESCRIPTION</b>
<b>FOR ALL COMBINES</b>			
1	LA-249101	1	CABLE ASM, CONTROLLERS TO VALVE
2	LA-249091	1	CABLE ASM, CAB TO CONROLLERS
<b>FOR COMBINES INSTALLED IN FACTORY ONLY</b>			
NS	LA-239402	1	26-2800 FACTORY INSTALL MANIFOLD WIRING KIT
<b>FOR COMBINES INSTALLED BY DEALER - WITHOUT FIELD TRACKER</b>			
3	LA-249081	1	CABLE ASM, LEVELING & TRIM
4	LA-249071	1	CABLE ASM, SWITCH TO VALVE
NS	LA-235472	1	RELAY KIT, HILLCO LATERAL TILT (21-2300)
<b>FOR COMBINES INSTALLED BY DEALER - WITH FIELD TRACKER</b>			
5	LA-249061	1	CABLE ASM, LEVELING
<b>FOR COMBINES INSTALLED BY DEALER - WITH FIELD TRACKER</b>			
6	LA-249051	1	CABLE ASM, FIELD TRACKER JUMPER

### 8 HYDRAULICS

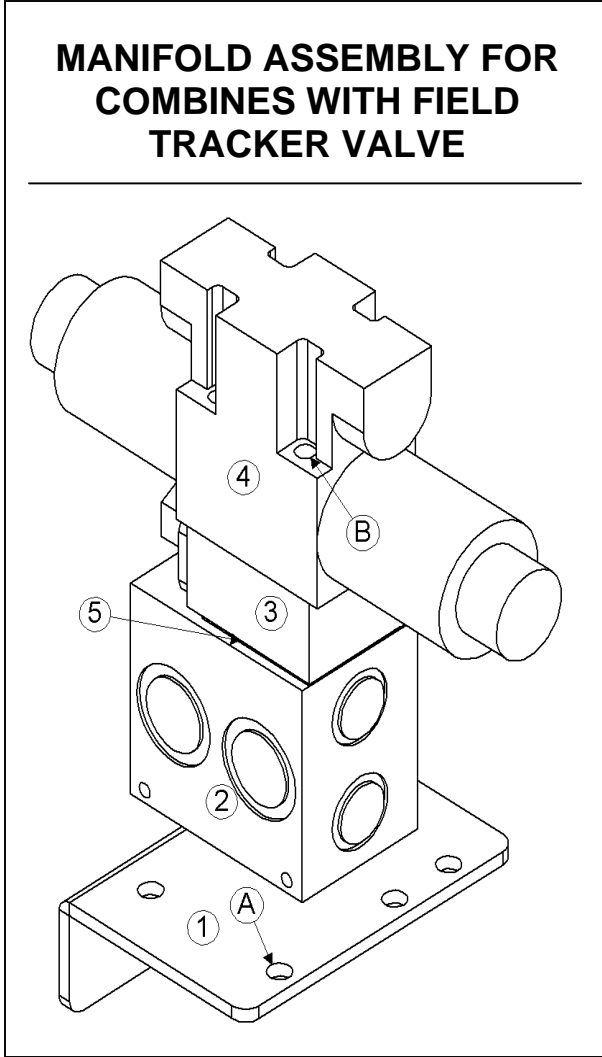


Model 2800 Hillco Leveling System  
For Serial Numbers 2800-1103 thru 2800-1127

<b>COUNTERBALANCE VALVE AND CYLINDERS</b>				
<b>REF.</b>	<b>PART NO.</b>	<b>QTY.</b>	<b>PART NAME</b>	<b>DESCRIPTION</b>
1	HC-138901	2	VALVE, 3-PORT COUNTERBALANCE	
..	HC-139171	2	BODY, COUNTERBALANCE VALVE	
..	HC-139161	2	CARTRIDGE, COUNTERBALANCE VALVE	
NS	HC-140361	2	KIT, SEAL, COUNTERBALANCE VALVE	
2	HC-103227	2	CYLINDER, MAIN	
..	HC-134251	2	KIT, SEAL, MAIN CYLINDER	
3	HC-101842	1	CYLINDER, MASTER	
..	HC-134201	1	KIT, SEAL, MASTER CYLINDER	
4	HC-100706	1	CYLINDER, SLAVE	
..	HC-134191	1	KIT, SEAL, SLAVE CYLINDER	
5	HC-140011	1	HM EXTENSION, FORWARD PROPULSION	FORWARD PROPULSION HOSE AT HYDRO MOTOR
<b>CODE 62 SPLIT FLANGE CONNECTOR KIT ASSEMBLY</b>				
<b>REF.</b>	<b>PART NO.</b>	<b>QTY.</b>	<b>PART NAME</b>	<b>DESCRIPTION</b>
ASM	HC-101843	2	CODE 62 SPLT FLNG CONNECTOR KIT WITH O-RINGS	FWD AND REAR PROPULSION HOSE
6	HC-134911	6	O-RING, CODE 62 CONNECTOR	
7	HC-137891	2	PLATE, CODE 62	
8	HC-137901	4	CODE 62, #16 SPLIT FLANGE KIT	
NS	F-HC8-07C44	8	HC8 7/16 X 2-3/4 PLT	
NS	F-HN8-07C	8	HN8 7/16-14	
NS	F-LW-07	8	LW 7/16 PLT	
<b>HYDRAULIC FASTENERS</b>				
<b>REF.</b>	<b>PART NO.</b>	<b>QTY.</b>	<b>PART NAME</b>	<b>WHERE USED</b>
A	F-SSS-04F04	8	SET SCREW, SOCKET 1/4-28 X 1/4, GRADE 8	MASTER, SLAVE, & MAIN CYLINDERS
B	F-HC8-07C88	4	HC8 7/16-14 X 5-1/2	HYDRO FWD PROPULSION EXTENSION
B	F-LWH-07	4	LW 7/16 HD	HYDRO FWD PROPULSION EXTENSION

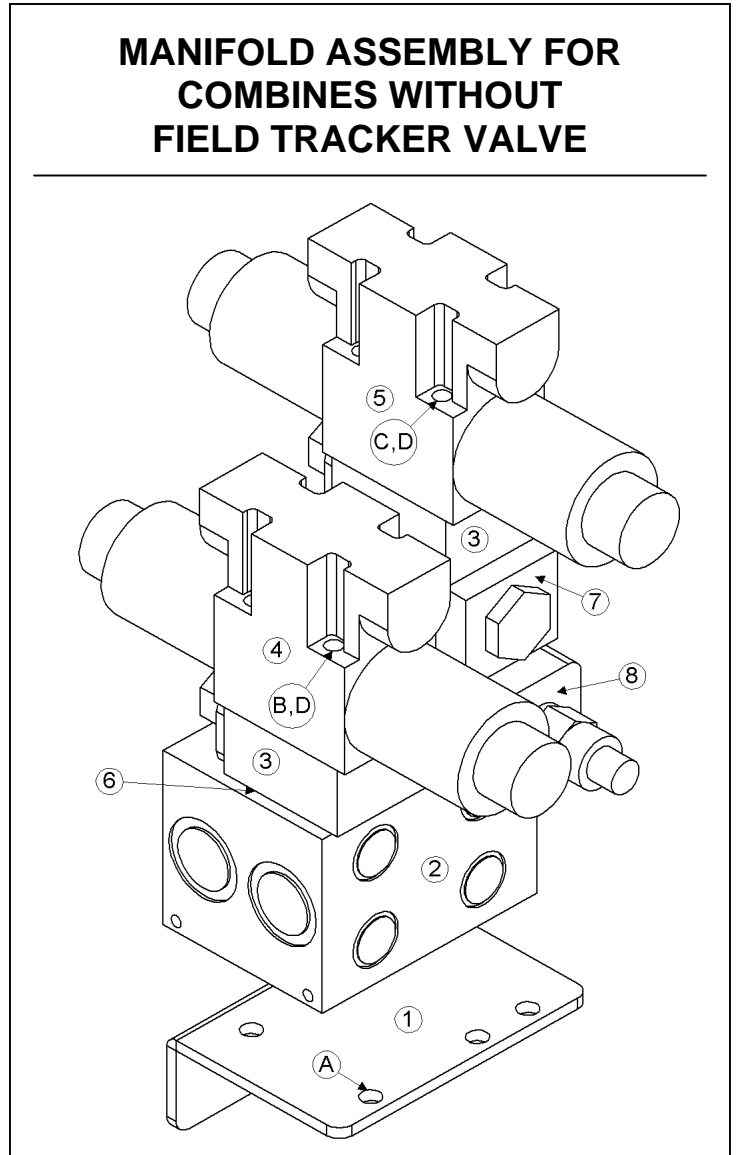
### HYDRAULIC MANIFOLD

#### MANIFOLD ASSEMBLY FOR COMBINES WITH FIELD TRACKER VALVE



\*\*Note: Be sure to look under the correct headings in both the drawings and the lists to the right, as the components for the two manifold assemblies are different.

#### MANIFOLD ASSEMBLY FOR COMBINES WITHOUT FIELD TRACKER VALVE



Model 2800 Hillco Leveling System  
For Serial Numbers 2800-1103 thru 2800-1127

<b>MANIFOLD COMPONENTS</b>				
REF.	PART NO.	QTY.	PART NAME	DESCRIPTION
<b>FOR COMBINES WITH FIELD TRACKER VALVE</b>				
1	LM-249041	1	HM PLATE, MANIFOLD MOUNT	
2	HC-138861	1	MANIFOLD, SINGLE STATION	
3	HC-101264	1	SHUTTLE ASM, LOAD SENSE	
..	HC-101021	1	CARTRIDGE, LOAD SENSE VALVE	
..	HC-101022	1	BODY, LOAD SENSE VALVE	
NS	HC-102082	1	SEAL KIT, LOAD SENSE SHUTTLE ASM	
4	HC-139781	1	VALVE, DIRECTIONAL CONTROL, LEVELING	
NS	LM-250111	1	ORIFICE, .128, "P" PORT ON DIRECTIONAL CONTROL VALVE	
NS	HC-142731	1	SEAL KIT, DIRECTIONAL CONTROL VALVE	
5	HC-142761	1	SUBPLATE	
<b>FOR COMBINES WITHOUT FIELD TRACKER VALVE</b>				
1	LM-249041	1	HM PLATE, MANIFOLD MOUNT	
2	HC-138851	1	MANIFOLD, 2 STATION	
3	HC-101264	2	SHUTTLE ASM, LOAD SENSE	
..	HC-101021	2	CARTRIDGE, LOAD SENSE VALVE	
..	HC-101022	2	BODY, LOAD SENSE VALVE	
NS	HC-102082	2	SEAL KIT, LOAD SENSE SHUTTLE ASM	
4	HC-139781	1	VALVE, DIRECTIONAL CONTROL, LEVELING	
NS	LM-250111	1	ORIFICE, .128, "P" PORT IN DIRECTIONAL CONTROL VALVE	
NS	HC-142731	1	SEAL KIT, DIRECTIONAL CONTROL VALVE	
5	HC-139881	1	VALVE, HEADER TRIM DIRECTIONAL CONTROL	
NS	LM-250121	1	ORIFICE, .55, "P" PORT IN DIRECTIONAL CONTROL VALVE	
NS	HC-142731	1	SEAL KIT, DIRECTIONAL CONTROL VALVE	
6	HC-142761	2	SUBPLATE	
7	HC-138881	1	VALVE, PILOT OPERATED CHECK	
8	HC-138891	1	RELIEF, DUAL	
<b>FOR COMBINES WITH FIELD TRACKER ELECTRONICS BUT NO VALVE</b>				
NS	LM-249701	4	HM STUD, MANIFOLD TRIM	
NS	LM-250131	1	HM TUBE, LOAD SENSE	
<b>MANIFOLD FASTENERS</b>				
A	F-HNF-05C	4	FLHN 5/16-18 SERR.	SECURES MANIFOLD TO MNT PLT
B	LM-249691	4	HM STUD, MANIFOLD LEVELING	LEVELING SECTION OF MANIFOLD
C	LM-249701	4	HM STUD, MANIFOLD TRIM	TRIM SECTION OF MANIFOLD
D	HC-139871	8	NUT, STUD, 10-24	TRIM & LEVELING SECTIONS OF MANIFOLD

Model 2800 Hillco Leveling System  
For Serial Numbers 2800-1103 thru 2800-1127

**HYDRAULIC HOSES**

REF.	PART NO.	QTY.	PART NAME	WHERE USED
<b>FOR ALL COMBINES</b>				
NS	LA-139571	1	5/8" 100R2 HOSE 47" #10 FORS X #10 FORS 90 DEG	LEVELING VALVE PRESSURE HOSE
NS	LA-140031	1	5/8" 100R2 HOSE 47" #10 FORS 90 X #12 FORS	LEVELING VALVE PRESSURE HOSE
NS	LA-139581	1	5/8" 100R1 HOSE 35" #12 FORS X #10 FORS 90 DEG	LEVELING VALVE RETURN HOSE
NS	LA-140021	1	5/8" 100R2 HOSE 36" #12 FORS X #12 FORS 90 DEG	PRESSURE HOSE TO CASE MANIFOLD
NS	LA-133102	1	1/4" 100R2 HOSE 54" #6 FORS 90 X #4 FORS	LOAD SENSE LINE
<b>FOR COMBINES WITH STAND-ALONE LEVELING MANIFOLD</b>				
NS	LA-139591	1	3/8" 100R2 HOSE 158-1/2" #6 FORS 90 X #6 FORS STR.	LEVELING PORT "A" TO COUNTERBALANCE VALVE PORT #2 RIGHT
NS	LA-139591	1	3/8" 100R2 HOSE 158-1/2" #6 FORS 90 X #6 FORS STR.	LEVELING PORT "B" TO COUNTERBALANCE VALVE PORT #3 RIGHT
<b>FOR COMBINES WITH LEVELING MANIFOLD INTEGRATED WITH CASE MANIFOLD</b>				
NS	LA-133442	1	3/8" 100R2 HOSE 129-1/2" #6 FORS 90 X #6 FORS STR.	LEVELING PORT "A" TO COUNTERBALANCE VALVE PORT #2 RIGHT
NS	LA-133442	1	3/8" 100R2 HOSE 129-1/2" #6 FORS 90 X #6 FORS STR.	LEVELING PORT "B" TO COUNTERBALANCE VALVE PORT #3 RIGHT
<b>FOR COMBINES WITHOUT FIELD TRACKER VALVE</b>				
NS	LA-139601	1	1/4" 100R2 HOSE 145-1/4" #6 FORS STR. BOTH ENDS	TRIM PORT "A" TO MASTER BASE
NS	LA-139611	1	1/4" 100R2 HOSE 135-1/2" #6 FORS STR. BOTH ENDS	TRIM PORT "B" TO MASTER ROD
<b>BULKHEAD TO MASTER AND SLAVE CYLINDERS</b>				
<b>FOR ALL COMBINES</b>				
NS	LA-133423	1	1/4" 100R2 HOSE 111" #6 FORS X #6 FORS	MASTER CYLINDER BASE TO SLAVE CYLINDER BASE
NS	LA-133433	1	1/4" 100R2 HOSE 133" #6 FORS X #6 FORS	MASTER CYLINDER ROD TO SLAVE CYLINDER ROD
NS	LA-139401	1	3/8" 100R2 HOSE 36-3/4" #6 FORS X #6 FORS 90	COUNTERBALANCE VALVE PORT #2 RIGHT TO COUNTERBALANCE VALVE PORT #3 LEFT
NS	LA-139411	1	3/8" 100R2 HOSE 34-1/2" #6 FORS X #6 FORS 90	COUNTERBALANCE VALVE PORT #3 RIGHT TO COUNTERBALANCE VALVE PORT #2 LEFT
NS	LA-139421	2	3/8" 100R2 HOSE 15-1/4" #6 FORS X #6 FORS 90	MAIN ROD TO COUNTERBALANCE VALVE PORT #3 (LEFT & RIGHT)
<b>FOR COMBINES WITH FIELD TRACKER VALVE</b>				
NS	LA-139381	1	1/4" 100R2 HOSE 116-1/4" #6 FORS STR. BOTH ENDS	FIELD TRACKER CW PORT TO MASTER BASE
NS	LA-139391	1	1/4" 100R2 HOSE 106-1/2" #6 FORS STR. BOTH ENDS	FIELD TRACKER CCW PORT TO MASTER ROD

Model 2800 Hillco Leveling System  
 For Serial Numbers 2800-1103 thru 2800-1127  
**HYDRAULIC HOSES (CONTINUED)**

<b>HYDROSTAT</b>				
REF.	PART NO.	QTY.	PART NAME	WHERE USED
<b>FOR ALL COMBINES</b>				
NS	LA-101809	1	1" 6000 PSI WP 18 IN W/1 IN CODE 62 FLANGE ENDS STR.	HYDROSTATIC FORWARD PROPUSION HOSE EXTENSION
<b>FOR SN JJCO047918 TO JJCO193725</b>				
NS	L26A-102097	1	1" 100R15 HOSE 44" W/ 1" CODE 62 FLANGE ENDS	HYDROSTAT FORWARD PROPULSION
NS	L26A-102098	1	1" 100R1 HOSE 46" #16 FORS X #16 FORS	HYDROSTAT CASE DRAIN HOSE
<b>GREASE</b>				
<b>FOR ALL COMBINES</b>				
NS	LA-133322	1	3/16 R1 55 IN GREASE HOSE 1/8 MPT X 1/8 MPT	REMOTE GREASE FROM MASTER ROD
NS	LA-133331	1	3/16 R1 12 IN GREASE HOSE 1/8 MPT X 1/8 MPT	REMOTE GREASE FROM MASTER BASE
NS	LA-133341	1	3/16 R1 9-1/2 IN GREASE HOSE 1/8 MPT X 1/8 MPT	REMOTE GREASE LINE FROM RIGHT LEVELING CYLINDER BASE TO SIDE
NS	LA-133341	1	3/16 R1 9-1/2 IN GREASE HOSE 1/8 MPT X 1/8 MPT	REMOTE GREASE LINE FROM LEFT LEVELING CYLINDER BASE TO SIDE
NS	LA-133351	1	3/16 R1 31-1/2 IN GREASE HOSE 1/8 MPT X 1/8 MPT	REMOTE GREASE LINE FROM MAIN PIVOT PIN TO SIDE

Model 2800 Hillco Leveling System  
For Serial Numbers 2800-1103 thru 2800-1127

**HYDRAULIC ADAPTERS**

<b>LEVELING AND TRIM MANIFOLDS</b>				
<b>REF.</b>	<b>PART NO.</b>	<b>QTY.</b>	<b>PART NAME</b>	<b>WHERE USED</b>
<b>FOR ALL COMBINES</b>				
NS	HA-M-6MF6FF	1	#6 FORS SWIVEL NUT RUN TEE	LOAD SENSE LINE AT STEERING PRIORITY VALVE
NS	HA-M-10FF10MF	1	#10 ORS SWIVEL NUT RUN TEE	PRESSURE HOSE AT STEERING PRIORITY VALVE
NS	HA-M-12FF12MF	2	#12 ORS SWIVEL NUT RUN TEE	RETURN HOSE AT RETURN BLOCK & PRESSURE HOSE AT PRIORITY VALVE
NS	HA-A-10MO	2	#10 MORB ALLEN HEAD PLUG	"P" & "T" PORTS
NS	HA-L-10MF10MO	2	#10 MORS X #10 MORB 90 DEG	"P" & "T" PORTS
NS	HA-S-6MF8MO	2	#6 MORS X #8 MORB STRAIGHT	"A" & "B" LEVELING PORTS
<b>FOR COMBINES WITHOUT FIELD TRACKER VALVE</b>				
NS	HA-S-6MF8MO	2	#6 MORS X #8 MORB STRAIGHT	"A" & "B" TRIM PORTS
NS	HA-T-4MF4MO	1	#4 MORB X #4 MORS STRAIGHT THREAD RUN TEE	LOAD SENSE SHUTTLE
NS	HA-S-4MF4MO	1	#4 MORB X #4 MORS STRAIGHT	LOAD SENSE SHUTTLE
NS	HC-139901	2	#4 ORS-TF NUT	STEEL LOAD SENSE LINE
NS	HC-139911	2	#4 ORS-TF FERRULE	STEEL LOAD SENSE LINE
NS	HC-139921	2	#4 ORS-TF SLEEVE	STEEL LOAD SENSE LINE
<b>FOR COMBINES WITH FIELD TRACKER VALVE</b>				
NS	HA-L-4MF4M0	1	#4 MORS X #4 MORB 90 DEG	LOAD SENSE SHUTTLE
NS	HA-L-6MF6MO	2	#6 MORS X #6 MORB 90 DEG	FIELD TRACKER CW AND CCW PORTS
<b>MAIN CYLINDERS AND COUNTERBALANCE VALVE</b>				
NS	HA-Q-6MF6MO	3	#6 MORS X #6 MORB STRAIGHT THREAD BRANCH TEE	LEFT & RIGHT COUNTERBALANCE VALVE PORT #3 AND COUNTERBALANCE #2 RIGHT
NS	HA-K-6MF6FF	1	#6 MORS X #6 FORS SWIVEL NUT BRANCH TEE	RIGHT COUNTERBALANCE VALVE PORT #3
NS	HA-L-6MF6MO	1	#6 MORS X #6 MORB 90 DEG	LEFT COUNTERBALANCE VALVE PORT #2
NS	HA-S-6FO8MO	2	#6 FORB X #8MORB STR	LEFT & RIGHT MAIN CYLINDER BASE
NS	HA-L-6MF8MO	2	#6MORS X #8MORB 90 DEG	LEFT & RIGHT MAIN CYLINDER ROD
NS	HA-L-6MO6MO	2	#6 MORB X #6 MORB 90 DEG	LEFT AND RIGHT PILOT OP CHECK VALVE #1
<b>MASTER AND SLAVE CYLINDERS</b>				
NS	HA-Q-6MF6MO	2	#6 MORS X #6 MORB STR THREAD BRANCH TEE	MASTER BASE AND ROD PORTS
NS	HA-L-6MF6MO	2	#6 MORS X #6 MORB 90 DEG	SLAVE BASE AND ROD PORTS
<b>GREASE</b>				
NS	HC-133891	1	ZERK, GREASE 1/8 MPT STRAIGHT	TRANSITION MAIN PIVOT PIN
NS	HC-135771	1	1/4-28 MALE X 1/8 FPT 90 DEG	MASTER CYLINDER BASE
NS	HC-135761	2	1/4-28 MALE X 1/8 FPT 45 DEG	LEVELING CYLINDERS BASE
NS	HC-138011	5	ZERK, GREASE 1/4-28 STRAIGHT	ALL GREASE HOSES
NS	HA-NJ-2FN	5	1/8 NPSM BULKHEAD LOCKNUT	BULKHEAD CONNECTORS
NS	HA-S-2FP2MN	5	1/8 NPSM X 1/8 FPT BULKHEAD CONNECTOR	BULKHEAD CONNECTORS
NS	HC-135881	1	1/4-28 MALE X 1/8 FPT STR.	MASTER CYLINDER ROD
NS	HA-L-2FP2MP	1	1/8 MPT 90 STREET EL	MAIN PIVOT PIN



Model 2800 Hillco Leveling System  
For Serial Numbers 2800-1103 thru 2800-1127

**9 MISCELLANEOUS**

<b>DECALS AND LITERATURE</b>				
<b>REF.</b>	<b>PART NO.</b>	<b>QTY.</b>	<b>PART NAME</b>	<b>DESCRIPTION</b>
NS	LL20-100773	2	DECAL, GRAY	HILLCO 2000 LEVELING SYSTEM
NS	LL20-100782	1	LABEL, SAFETY	CAUTION LEVELING SYSTEM CAB
NS	LL20-100783	6	LABEL, SAFETY	DANGER CRUSHING HAZARD
NS	LL20-100784	2	LABEL, SAFETY	DANGER PINCH POINT
NS	LL20-100785	1	LABEL, SAFETY	CAUTION MOVING STEP
NS	LL20-100786	1	LABEL, SAFETY	WARNING ELECTRONIC CRUSHING HAZARD
NS	LL20-100787	2	LABEL, SAFETY	CAUTION LEVELING SYSTEM HAZARD
NS	LL20-100788	3	LABEL, SAFETY	DANGER HYDRAULIC HAZARD
NS	LL-133731	1	LABEL, GREASE 10 HRS	REAR AXLE
NS	LL-133731	1	LABEL, GREASE 10 HRS	RH OVERCARRIAGE
NS	LL-133731	1	LABEL, GREASE 10 HRS	LH OVERCARRIAGE
NS	LL-133731	1	LABEL, GREASE 10 HRS	TT PVT PIN
NS	LL-133741	1	LABEL, GREASE 50 HRS	RH TRANS SIDE PLT
NS	LL-133741	1	LABEL, GREASE 50 HRS	HDR LIFT CYL MNT (MAIN PVT PIN)
NS	LL-133731	2	LABEL, GREASE 10 HRS	MAIN LEV CYL BOTTOM (RH AND LH)
NS	D-010223DJC01	1	MANUAL, OPERATOR'S	
NS	D-010310DJC08	1	MANUAL, INSTALLATION	
NS	D-10227DJC01	1	MANUAL, FACTORY INSTALLATION	
NS	D-060111ADL01A	1	MANUAL, PARTS	
<b>FOR FACTORY AND DEALER INSTALL WITH FIELD TRACKER</b>				
NS	D-010621LJH01	1	AUTO DISABLE RELAY KIT INSTRUCTIONS	
<b>FOR FACTORY INSTALL ONLY</b>				
NS	D-031111DJC01	1	INSTRUCTION SHEET	
<b>HOSE CLAMPS AND FASTENERS</b>				
NS	MC-101342	2	CLAMP R/C 1/4H 1-1/2T	AXLE FRONT CORNER GUSSET
NS	MC-101343	1	CLAMP R/C 1/4H 2-7/16T	LEFT SIDE OVERCARRIAGE
NS	F-HC5-04C12	3	HC5 1/4-20 x 3/4	HOSE CLAMPS
NS	F-HNF-04C	3	HN 1/4-20, FLNG., SERR.	HOSE CLAMPS
NS	F-FW-04	3	FW 1/4	HOSE CLAMPS
NS	MC-101342	1	CLAMP R/C 1/4H 1-1/2T	TRANSITION RIGHT UP-RIGHT

Model 2800 Hillco Leveling System  
For Serial Numbers 2800-1103 thru 2800-1127

**10 PART NUMBER INDEX**

PART NUMBER	PAGE NUMBER	PART NUMBER	PAGE NUMBER	PART NUMBER	PAGE NUMBER
D-010223DJC01	9-1	F-FWH-12	2-6, 5-2	F-LW-12A	5-2
D-010310DJC08	9-1	F-HC-20M065E	3-2	F-LWE-06	7-1
D-010621LJH01	9-1	F-HC5-04C12	9-1	F-LWH-07	8-2
D-031111DJC01	9-1	F-HC5-05C12	7-1	F-LWH-20M	3-2
D-060111ADL01	9-1	F-HC5-06C12	2-6	F-MB-12WR18	2-6
D-10227DJC01	9-1	F-HC5-06C14	3-2	F-MB-14NR40	2-6
EC-100002	7-2	F-HC5-06C20	2-6	F-MB-18NR18	7-1
EC-100003	7-2	F-HC5-08C104	2-4	F-MB-18NR24	4-2
EC-100008	7-4	F-HC5-08C16	3-2	F-PCL-10X24	2-6
EC-100009	7-2, 7-4	F-HC5-08C176	2-4	F-PCT-02X16	2-6
EC-100010	7-2, 7-4	F-HC5-08C20	2-6	F-PCT-05X48	2-4
EC-100164	7-4	F-HC5-08C32	2-6	F-PHM-#10C28	7-1
EC-100165	7-4	F-HC5-12C88	5-2	F-PHMS-06C24	6-2
EC-100549	7-4	F-HC8-07C44	8-2	F-PHMS-06C32	6-2
EC-100550	7-4	F-HC8-07C88	8-2	F-PHMS-06C40	6-2
EC-100551	7-4	F-HC8-08C36	4-2	F-PHMS-06C56	6-2
EC-100552	7-4	F-HC8-08C44	2-6	F-PR-06X40	6-2
EC-100552	7-4	F-HC8-08C48	4-2	F-SHC-20M065E	3-2
EC-100553	7-4	F-HC8-08F20	2-4	F-SSS-04F04	8-2
EC-100554	7-4	F-HC8-10C24	3-2	F-SSS-06C08	2-4, 2-6
EC-100557	7-2	F-HC8-10C32	2-6, 3-2	F-THC-#10C08	7-1
EC-100628	7-4	F-HC8-10C36	3-2	F-THM-06C16	2-6
EC-100692	7-2	F-HC8-10C80	2-6	F-THMS-04C08	2-6, 7-1
EC-100693	7-4	F-HC8-12C112	5-2	F-THMS-04C12	7-1
EC-101874	7-2	F-HC8-12C120	5-2	F-THMS-05C16	2-6
EC-101876	7-2	F-HC8-12C136	5-2	F-THMS-06C16	6-2, 7-1
EC-101877	7-2	F-HC8-12C144	5-2	F-UDS-#7X06	3-2
EC-138731	7-2	F-HC8-12C160	5-2	HA-A-10MO	8-7
EC-138741	7-2	F-HC8-12C56	5-2	HA-K-6MF6FF	8-7
EC-138751	7-2	F-HC8-12C72	5-2	HA-L-10MF10MO	8-7
EC-138761	7-2	F-HC8-12C88	5-2	HA-L-2FP2MP	8-7
EC-138771	7-2	F-HC8-12C96	5-2	HA-L-4MF4MO	8-7
EC-138781	7-2	F-HC8-16C44	4-2	HA-L-6MF6MO	8-7
EC-139301	7-4	F-HC8-16C72	4-2	HA-L-6MO6MO	8-7
EC-139311	7-4	F-HC8-20C40	2-4	HA-M-10FF10MF	8-7
EC-139321	7-4	F-HN5-06C	2-6	HA-M-12FF12MF	8-7
EC-139331	7-4	F-HN5-08C	2-6	HA-M-6MF6FF	8-7
EC-141891	7-2	F-HN8-07C	8-2	HA-NJ-2FN	8-7
EC-141901	7-2	F-HN8-12C	5-2	HA-Q-6MF6MO	8-7
EC-142121	7-2	F-HNF-#10C	7-1	HA-S-2FP2MN	8-7
ET-QC-20	7-4	F-HNF-04C	2-6, 7-1, 9-1	HA-S-4MF4MO	8-7
ET-SP-20	7-4	F-HNF-05C	2-6, 7-1, 8-4	HA-S-6FO8MO	8-7
ET-ST-20#10	7-4	F-HNF-06C	2-6, 6-2, 7-1	HA-S-6MF8MO	8-7
ET-ST-20#6	7-4	F-HNF-12C	5-2	HA-T-4MF4MO	8-7
ET-ST-2004	7-4	F-HNN-10C	2-6	HC-100706	2-2, 8-2
ET-ST-2008	7-4	F-HNN-12C	2-6	HC-101021	8-4
F-CB-06C20	2-6	F-HNS-05F	2-2, 2-6	HC-101022	8-4
F-CB-10C40	2-6	F-HNS-06C	2-6	HC-101264	8-4
F-EB-04C20	2-6	F-HNS-08C	2-4, 4-2	HC-101842	3-2, 8-2
F-FHS-05F10	2-6	F-HNS-10C	2-6, 3-2	HC-101843	8-2
F-FHS-05F20	2-2, 2-6	F-HNS-16C	4-2	HC-102082	8-4
F-FW-04	9-1	F-HNS-20C	2-4	HC-103227	3-2, 8-2
F-FW-06	6-2	F-HNSF-08C	2-6	HC-133891	8-7
F-FW-10	3-2	F-LW-06	2-6, 3-2	HC-134191	2-2, 8-2
F-FW-12	5-2	F-LW-07	8-2	HC-134201	8-2
F-FWH-06	2-6	F-LW-08	2-6, 3-2	HC-134251	8-2
F-FWH-10	2-6, 3-2	F-LW-08A	2-4	HC-134911	8-2

Model 2800 Hillco Leveling System  
 For Serial Numbers 2800-1103 thru 2800-1127

**PART NUMBER INDEX (CONTINUED)**

PART NUMBER	PAGE NUMBER	PART NUMBER	PAGE NUMBER	PART NUMBER	PAGE NUMBER
HC-135761	8-7	LA-226852	2-2	LM-226532	2-2, 2-4
HC-135771	8-7	LA-226901	5-2	LM-226631	3-2
HC-135881	8-7	LA-226971	6-2	LM-226831	2-2
HC-137891	8-2	LA-226991	4-2	LM-226841	2-2
HC-137901	8-2	LA-227001	6-2	LM-226961	2-4
HC-138011	8-7	LA-227101	2-2	LM-230811	6-2
HC-138851	8-4	LA-227243	3-2	LM-230821	6-2
HC-138861	8-4	LA-227253	3-2	LM-234101	4-2
HC-138881	8-4	LA-227263	3-2	LM-234152	2-2
HC-138891	8-4	LA-228761	4-2	LM-234221	2-2
HC-138901	3-2, 8-2	LA-229071	2-2, 3-2	LM-235481	2-4, 3-2
HC-139161	8-2	LA-230551	3-2	LM-238091	2-2
HC-139171	8-2	LA-234251	2-2	LM-243792	2-2
HC-139781	8-4	LA-235472	7-2, 7-4, 7-6	LM-243801	2-2
HC-139871	8-4	LA-236731	7-2, 7-4	LM-243831	2-2
HC-139881	8-4	LA-238131	6-2	LM-243841	2-2
HC-139901	8-7	LA-239402	7-4, 7-6	LM-244471	2-2, 2-4
HC-139911	8-7	LA-240111	2-4	LM-245431	4-2
HC-139921	8-7	LA-240121	2-4	LM-248981	2-6
HC-140011	8-2	LA-243691	2-2	LM-249041	8-4
HC-140361	8-2	LA-243711	2-2	LM-249691	8-4
HC-142731	8-4	LA-243821	2-2	LM-249701	8-4
HC-142761	8-4	LA-245191	2-2	LM-250111	8-4
L26A-102097	8-6	LA-249051	7-6	LM-250121	8-4
L26A-102098	8-6	LA-249061	7-6	LM-250131	8-4
LA-101809	8-6	LA-249071	7-6	LP-103871	3-2
LA-133102	8-5	LA-249081	7-6	LP-104791	2-2
LA-133322	8-6	LA-249091	7-6	LP-117921	6-2
LA-133331	8-6	LA-249101	7-6	LP-213242	2-2
LA-133341	8-6	LA-249111	7-2	LP-213252	2-2
LA-133351	8-6	LA-255941	3-2	LP-218371	2-2
LA-133433	8-5	LL-133731	9-1	LP-249121	7-2
LA-133442	8-5	LL-133741	9-1	LP-249181	3-2, 7-2
LA-133461	8-6	LL20-100773	9-1	LS-212701	2-2
LA-133471	8-6	LL20-100782	9-1	MC-100237	2-2
LA-133481	8-6	LL20-100783	9-1	MC-100239	2-2
LA-139381	8-5	LL20-100784	9-1	MC-100240	2-2
LA-139391	8-5	LL20-100785	9-1	MC-100548	2-2
LA-139401	8-5	LL20-100786	9-1	MC-100710	6-2
LA-139411	8-5	LL20-100787	9-1	MC-100760	2-2
LA-139421	8-5	LL20-100788	9-1	MC-100762	2-2
LA-139571	8-5	LL20-101868	7-2	MC-101332	2-2
LA-139581	8-5	LL20-101869	7-2	MC-101333	2-2
LA-139591	8-5	LM-207011	2-2	MC-101339	2-2
LA-139601	8-5	LM-207631	7-2	MC-101342	9-1
LA-139611	8-5	LM-212561	5-2	MC-101343	9-1
LA-140021	8-5	LM-213201	2-2	MC-101838	2-2
LA-140031	8-5	LM-213291	2-2	MC-101839	2-2
LA-142141	8-6	LM-214941	6-2	MC-133711	5-2
LA-214931	6-2	LM-214951	6-2	MC-135491	2-2
LA-217691	3-2	LM-218501	2-4	MC-135501	2-2
LA-219511	6-2	LM-219501	7-2	MC-135511	2-2
LA-220631	2-4	LM-221591	2-2	MC-136921	2-2, 2-4
LA-220641	2-4	LM-221601	2-2	MC-137251	3-2
LA-220651	2-4	LM-225522	2-2	MC-137441	2-2
LA-220661	2-4	LM-225531	2-2	MC-137501	3-2
LA-225411	2-2	LM-225541	2-2		
LA-226101	4-2	LM-226061	4-2		